

# ON THE COUPLING BETWEEN AN IDEAL FLUID AND IMMERSED PARTICLES

HENRY O. JACOBS

*Imperial College London, Mathematics Department, 180 Queen's Gate Rd.,  
London SW72AZ, UK*

TUDOR S. RATIU

*Section de Mathématiques, Station 8, and Bernoulli Center, Station 15, Ecole  
Polytechnique Fédérale de Lausanne, CH-1015 Lausanne, Switzerland*

MATHIEU DESBRUN

*Computing + Mathematical Sciences, MC305-16, California Institute of  
Technology, 1200 E. California Blvd., Pasadena, CA 91125, USA*

ABSTRACT. In this paper we present finite dimensional particle-based models for fluids which respect a number of geometric properties of the Euler equations of motion. Specifically, we use Lagrange-Poincaré reduction to understand the coupling between a fluid and a set of Lagrangian particles that are supposed to simulate it. We substitute the use of principal connections in [CMR01] with vector field valued interpolations from particle velocity data. The consequence of writing evolution equations in terms of interpolation is two-fold. First, it provides estimates on the error incurred when interpolation is used to derive the evolution of the system. Second, this form of the equations of motion can inspire a family of particle and hybrid particle-spectral methods, where the error analysis is “built-in”. We also discuss the influence of other parameters attached to the particles, such as shape, orientation, or higher-order deformations, and how they can help us achieve a particle-centric version of Kelvin’s circulation theorem.

---

*E-mail addresses:* `h.jacobs@imperial.ac.uk`, `tudor.ratiu@epfl.ch`,  
`mathieu@caltech.edu`.

*Date:* June 29, 2013.

*1991 Mathematics Subject Classification.* 37K65,76B99,70H33.

*Key words and phrases.* Lagrange-Poincaré equations, ideal fluids, diffeomorphism groups, particle methods, variational principles, Lagrangian mechanics.

## 1. INTRODUCTION

Particles are capable of carrying a variety of information such as position, shape, orientation, et cetera. Moreover, when this data is described with finitely many numbers, we may consider including it as an input for a computer simulation. Given this point of view on particles, we seek to understand, from a geometric perspective, how a set of Lagrangian particles can be used as a computational device to numerically simulate an ideal fluid. We will explore this idea by applying Lagrange-Poincaré reduction to the exact equations of motion. The horizontal Lagrange-Poincaré equation can be used to inspire a family of particle methods. Specifically, given an ideal, homogeneous, inviscid, incompressible fluid on a Riemannian manifold  $M$  with smooth boundary  $\partial M$ , oriented by the associated Riemannian volume, the configuration space may be described by the group of volume preserving diffeomorphism,  $\text{SDiff}(M)$ , and the exact equations of motion for an ideal fluid are the  $L^2$ -geodesic equations as described in [Arn66]. Throughout the paper we shall assume that there is a Hodge decomposition; for compact boundary less manifolds this is standard (see, e.g., [Jos11]), for compact manifolds with boundary this holds in the case of  $\partial$ -manifolds (i.e., the manifold is, in addition, complete as a metric space, see [Sch95]), for non-compact manifolds this holds in function spaces with enough decay at infinity (for  $\mathbb{R}^n$  see, e.g., [Can75], [GT06], [Tro09] and if the manifold has boundary, see [Sch95]).

If  $\odot$  is an  $N$ -tuple of distinct points in  $M$ , let

$$G_{\odot} := \{\psi \in \text{SDiff}(M) \mid \psi(\odot) = \odot\}$$

be the isotropy subgroup of the natural action of  $\text{SDiff}(M)$  on  $M$ . The particle relabeling symmetry of an ideal fluid allows us to project the equations of motion onto the quotient space  $T\text{SDiff}(M)/G_{\odot}$ . Upon choosing an interpolation method, i.e., a means of interpolating a smooth vector field between the particles (see Figure 1 on page 9), we obtain an isomorphism to a direct sum of vector bundles,  $TX \oplus \tilde{\mathfrak{g}}_{\odot}$ . Here, the base manifold,  $X$ , is the configuration space of point particles in  $M$ , and  $TX$  is the tangent bundle of  $X$  (the state or velocity phase space). The second component,  $\tilde{\mathfrak{g}}_{\odot}$ , is a vector bundle over  $X$  whose fiber over  $x \in X$  is the infinite dimensional vector space of vector fields which vanish at the particle locations described by  $x$ . The vector bundle  $\tilde{\mathfrak{g}}$  stores the residual of an estimated spatial velocity field  $u$  obtained by an interpolation velocity data at a finite set of points. More generally, we can consider reducing by the subgroup

$$G_{\odot}^{(k)} := \{\psi \in \text{SDiff}(M) \mid T_{\odot}^{(k)}\psi = T_{\odot}^{(k)}id\}.$$

The resulting Lagrange-Poincaré equations occur on a direct sum  $TX^{(k)} \oplus \tilde{\mathfrak{g}}_{\odot}^{(k)}$ , where  $X^{(k)}$  is the configuration manifold of a more sophisticated type of particle which carries extra data such as orientation and shape; see §4 for the definition of all these objects. The equations on  $TX^{(k)} \oplus \tilde{\mathfrak{g}}_{\odot}^{(k)}$  describe the coupling between

a fluid and this sophisticated type of particle in terms of interpolation methods. The dynamics on the  $TX^{(k)}$  component suggests a new class of particle methods.

**1.1. Organization and main contributions.** To understand the intent of this paper, it helps to explain what we mean by an *interpolation method*. While a formal definition will be given in §2.3, the idea is fairly simple. Given  $N$  particles in  $M$  equipped with various data (e.g., position, velocity, orientation, higher-order deformations, etc), an interpolation method is a rule which produces a vector field on  $M$  that is consistent with this data (see Figure 1). Using the concept of an interpolation method, this paper accomplishes the following:

- (1) For each interpolation method, we construct an isomorphism between the quotient space  $(T\text{SDiff}(M))/G_\circ$  and the vector bundle  $TX \oplus \tilde{\mathfrak{g}}_\circ$  (Proposition 2.3).
- (2) We derive equations of motion on  $TX \oplus \tilde{\mathfrak{g}}_\circ$  for an arbitrary  $G_\circ$ -invariant Lagrangian on  $\text{SDiff}(M)$  (i.e., the Lagrange-Poincaré equations, Theorem 3.1).
- (3) We generalize these constructions to higher-order interpolation methods. The resulting equations describe a family of particle methods wherein the particles carry extra data such as orientation, shape, and higher order deformations (Theorem 5.1 and Corollary 5.1).
- (4) The numerical methods of Corollary 5.1 exhibit a particle-centric analog of Kelvin’s circulation theorem (Theorem 5.5).
- (5) We illustrate how first-order interpolation methods induce particle methods which are related to the vortex blob method.

In particular, these goals are accomplished as follows. In §2 we establish our notation and review the notion of a generalized connection (also called an *Ehresmann connection*, see [MMR90]) as described in [KMS99]. In §3, we carry out the reduction process by the isotropy subgroup of a finite set of particles for an ideal incompressible homogeneous inviscid fluid. In §4 we discuss reduction by higher-order isotropies in order to discuss particles with orientation, shape, and other attributes. In certain circumstances, this additional information produces particle methods which exhibit conservation laws found in the exact dynamics on  $\text{SDiff}(M)$ . Finally, in §5, we formulate a family of particle methods induced by an interpolation method and discuss some implications for the error analysis of these methods. We conclude that it is possible to construct hybrid particle-spectral methods for fluids within this family. Moreover, we show that the vortex blob algorithm fits within this family of methods and that the horizontal equations are a guide for corrections that allow for the deformation of vortex blobs. We close with §6, where we summarize how to extend these constructions to complex fluids, turbulence models, and the template matching problems which occur in medical imaging.

**1.2. Previous Work.** It was shown in [Arn66] that the Euler equations of motion for an ideal, homogeneous, inviscid, incompressible fluid on an oriented Riemannian manifold  $M$  with smooth boundary are the spatial (or Eulerian) representation of the geodesic equations on the group of volume preserving diffeomorphisms,  $\text{SDiff}(M)$ . This observation gave rise to a new perspective on fluid mechanics which lead to many developments, notably the proof of well posedness [EM70] and various extensions ranging all the way to charged fluids, magnetohydrodynamics, and even complex fluids with advected parameters (see, e.g., [Hol02, GBR09]). All of these systems are Lagrangian on the tangent bundle of groups of diffeomorphisms of a Riemannian manifold  $M$ . Additionally, these theories utilize the particle relabeling symmetry of the system to perform Euler-Poincaré reduction and thus bring the dynamics to the Lie algebra of this group [MR99, chapter 13].

As a result of this  $\text{SDiff}(M)$  symmetry, we may consider reducing by subgroups of  $\text{SDiff}(M)$ . This would be a special case of Lagrange-Poincaré reduction introduced and developed in [CMR01]. In particular, we may consider reducing by isotropy groups of a set of points in  $M$ . Such an approach is already mentioned in [MW83] for vortex dynamics and in [MD10] for the purpose of landmark matching problems; see also the references cited therein. However, to the best of our knowledge, Lagrange-Poincaré reduction has not been performed on such systems in the framework of [CMR01].

## 2. PRELIMINARY MATERIAL

Before introducing our contributions, we review generalized connections and volume-preserving diffeomorphisms and prove a few important theorems.

**2.1. Generalized Connections.** In this section we introduce the notion of a generalized connection, as presented in [KMS99], and prove some useful propositions for the purpose of this paper.

**Definition 2.1.** *Let  $\pi_E : E \rightarrow M$  be a vector bundle and  $\tau_E : TE \rightarrow E$  the tangent bundle of  $E$ . The vertical bundle is the vector bundle  $\pi_{V(E)} : V(E) \rightarrow E$  where  $V(E) := \text{kernel}(T\pi_E)$  and  $\pi_{V(E)} := \tau_E|_{V(E)}$ .*

The *vertical lift* operator,  $v^\uparrow : E \oplus E \rightarrow V(E)$ , is defined by

$$v^\uparrow(v_m, w_m) := \left. \frac{d}{d\epsilon} \right|_{\epsilon=0} (v_m + \epsilon w_m),$$

for all  $v_m, w_m \in E_m := \pi_E^{-1}(m)$ . This establishes an isomorphism between the vector bundles  $\text{proj}_1 : E \oplus E \rightarrow E$  and  $\pi_{V(E)} : V(E) \rightarrow E$ , where  $\text{proj}_1$  denotes the projection onto the first summand. The *fiber derivative*,  $\frac{\partial f}{\partial e} : E \rightarrow E^*$ , of a function  $f \in C^\infty(E)$  is defined by

$$(1) \quad \left\langle \frac{\partial f}{\partial e}(e), e' \right\rangle := \langle df(e), v^\uparrow(e, e') \rangle \equiv \left. \frac{d}{d\epsilon} \right|_{\epsilon=0} f(e + \epsilon e').$$

This notation suggests that we think of the fiber derivative  $\frac{\partial f}{\partial e}$  as a type of partial derivative in which we only vary the ‘fiber-component’. We shall also need a notion of partial differentiation with respect to the base space  $M$ . That is, we need to understand what is meant by  $\frac{\partial f}{\partial m}$  evaluated at  $e \in E$ , as an element of  $T_m^*M$  over the base point  $m = \pi_E(e)$ . This is obtained by the use of a covariant derivative.

**Definition 2.2.** *Let  $\pi_E : E \rightarrow M$  be a vector bundle. A horizontal bundle is a subbundle,  $H(E) \subset TE$ , such that  $TE = H(E) \oplus V(E)$ . This defines projectors  $\text{hor} : TE \rightarrow H(E)$  and  $\text{ver} : TE \rightarrow V(E)$ . The vertical projector,  $\text{ver}$ , is called a generalized connection. If  $C^\infty(I; E)$  denotes the set of smooth curves in  $E$  on an open interval  $I \subset \mathbb{R}$ , then the covariant derivative induced by  $H(E)$  (or  $\text{ver}$ ) is the map  $\frac{D}{Dt} : C^\infty(I; E) \rightarrow E$  given by*

$$(2) \quad \frac{De}{Dt} = v_\downarrow \left( \text{ver} \left( \frac{de}{dt} \right) \right)$$

Where  $v_\downarrow : V(E) \rightarrow E := \text{proj}_2 \circ (v^\uparrow)^{-1}$  and  $\text{proj}_2 : E \oplus E \rightarrow E$  is the projection onto the second component.

Naturally, the covariant derivative of a curve associated to a generalized connection on  $E$  (see (2)) induces a covariant derivative  $\frac{D\alpha}{Dt}$  of a curve  $\alpha(t)$  in the dual vector bundle  $E^*$  by the relation

$$\frac{d}{dt} \langle \alpha, e \rangle = \left\langle \frac{D\alpha}{Dt}, e \right\rangle + \left\langle \alpha, \frac{De}{Dt} \right\rangle,$$

where  $e(t) \in E$  is an arbitrary curve over the base curve of  $\alpha(t)$ .

Moreover, a generalized connection on  $E$  induces the *horizontal lift* operator  $h^\uparrow : E \oplus TM \rightarrow H(E)$  in the following way. Denote, as usual, by  $V_e(E), H_e(E) \subset T_eE$  the fibers of the vertical and horizontal bundles, respectively, and note that  $\dim V_e(E) = \dim E_{\pi_E(e)}$ ,  $\dim H_e(E) = \dim T_eE - \dim V_e(E) = \dim E - \dim E_{\pi_E(e)} = \dim M$ . Since  $T_e\pi_E|_{H(E)} : H_e(E) \rightarrow T_{\pi_E(e)}M$  is injective, the dimension count above implies that  $T_e\pi_E|_{H(E)}$  is an isomorphism. Define the *horizontal lift* operator by

$$h^\uparrow(e, \dot{m}) := \left[ (T_e\pi_E)|_{H(E)} \right]^{-1}(\dot{m}), \quad e \in E_m, \quad \dot{m} \in T_mM,$$

i.e.,  $h^\uparrow(e, \dot{m})$  is the unique horizontal vector in  $T_eE$  such that  $T\pi_E(h^\uparrow(e, \dot{m})) = \dot{m}$ . Note that the horizontal lift operator induces a vector bundle isomorphism

$$\begin{aligned} H(E) &\xrightarrow{\sim} \pi_E^*(TM) := \{(e, \dot{m}) \in E \times TM \mid \pi_E(e) = \tau_M(\dot{m})\} \\ v_e &\longmapsto (e, T_e\pi_E(v_e)) \\ h^\uparrow(e, \dot{m}) &\longleftarrow (e, \dot{m}) \end{aligned}$$

covering the identity on  $E$  between the horizontal subbundle  $H(E) \rightarrow E$  and the the pull-back bundle  $\pi_E^*(TM) \rightarrow E$  of the tangent bundle  $\tau_M : TM \rightarrow M$  by the vector bundle projection  $\pi_E : E \rightarrow M$ .

Finally, the choice of a generalized connection allows us to define the ‘partial derivative’ of a function with respect to the base manifold.

**Definition 2.3.** *Let  $\text{ver}$  be a generalized connection on a vector bundle  $\pi : E \rightarrow M$  and  $V$  a vector space. Let  $f \in C^\infty(E, V)$ . Define the covariant derivative  $\frac{\partial f}{\partial m} : E \rightarrow T^*M \otimes V$  of  $f$  to be the fiber bundle map covering the identity on  $M$  given by*

$$(3) \quad \left\langle \frac{\partial f}{\partial m}(e), \delta m \right\rangle := \langle df(e), h^\uparrow(e, \delta m) \rangle \in V$$

for all  $e \in E$  and  $\delta m \in T_m M$ .

By construction, this means that the total exterior derivative  $df \in \Omega^1(E; V)$  acting on the velocity of a curve  $e(t) \in E$  over  $m(t) \in M$  can be written as the sum (see (1), (3))

$$(4) \quad \left\langle df(e), \frac{de}{dt} \right\rangle = \left\langle \frac{\partial f}{\partial m}(e), \frac{dm}{dt} \right\rangle + \left\langle \frac{\partial f}{\partial e}(e), \frac{De}{Dt} \right\rangle.$$

If  $(M, g)$  is a Riemannian manifold we may use the Levi-Civita connection, defined on the vector bundle  $TM$ , to implement the previous constructions. Let  $\Gamma_{ij}^k := g^{kh} \left( \frac{\partial g_{hi}}{\partial m^j} + \frac{\partial g_{hj}}{\partial m^i} - \frac{\partial g_{ij}}{\partial m^h} \right)$  be the Christoffel symbols of the Levi-Civita connection, where  $(m^1, \dots, m^n)$  are local coordinates on  $M$  and  $g_{ij} := g \left( \frac{\partial}{\partial m^i}, \frac{\partial}{\partial m^j} \right)$  the local components of the metric tensor  $g$ . Since  $\Gamma_{ij}^k = \Gamma_{ji}^k$  for all indices, it follows that this connection is torsion free (and vice-versa). In natural tangent bundle charts  $(m^1, \dots, m^n, v^1, \dots, v^n)$ , the covariant derivative of a curve in  $TM$  with respect to the Levi-Civita connection is given, locally, by  $\frac{Dv^k}{Dt} = \frac{dv^k}{dt} + \Gamma_{ij}^k v^i \frac{dm^j}{dt}$ . Therefore, the horizontal lift induced by the Levi-Civita connection is given locally by

$$h^\uparrow((m^i, v^j), (m^i, \delta m^j)) = ((m^i, v^j), (\delta m^l, -\Gamma_{ij}^k v^i \delta m^j)),$$

which implies that the covariant derivative (3) of a function  $f \in C^\infty(TM, V)$  is given in local coordinates by

$$(5) \quad \left\langle \frac{\partial f}{\partial m}(v), \delta m \right\rangle = \frac{\partial f}{\partial m^k} \delta m^k - \frac{\partial f}{\partial v^k} \Gamma_{ij}^k v^i \delta m^j,$$

where  $v, \delta m \in T_m M$ . Note that the formulas for the horizontal lift  $h^\uparrow$  and  $\frac{\partial f}{\partial m}$  given above, are valid for any torsion free connection on  $TM$ , not just the Levi-Civita connection. This allows us to easily prove the following proposition which relates the notion of ‘torsion-free’ to the exterior derivative.

**Proposition 2.1.** *Let  $\alpha \in \Omega^1(M, V)$ . Given a torsion free connection on  $TM$  (such as a Levi-Civita connection) we can consider the covariant derivative  $\frac{\partial \alpha}{\partial m} :$*

$TM \rightarrow T^*M$  by viewing  $\alpha$  as a smooth function on  $TM$ . This induces the identity

$$(6) \quad d\alpha(m)(v, w) = \left\langle \frac{\partial \alpha}{\partial m}(w), v \right\rangle - \left\langle \frac{\partial \alpha}{\partial m}(v), w \right\rangle \in V,$$

where  $v, w \in T_m M$  and ‘ $d$ ’ is the exterior derivative on  $M$ .

*Proof.* This may be verified in a local coordinate chart, where  $\alpha(m) = \alpha_i(m)dm^i$ . Viewing  $\alpha$  as a function on  $TM$  with values in  $V$  we find that in a local vector bundle chart  $\alpha(m, v) = \alpha_i(m)v^i$ . Therefore,  $\frac{\partial \alpha}{\partial v^k}(m) = \alpha_k(m)$ . Thus, by invoking (5) we arrive at

$$\left\langle \frac{\partial \alpha}{\partial m}(m^i, w^j), v^k \frac{\partial}{\partial m^k} \right\rangle = \frac{\partial \alpha_i}{\partial m^j}(m)w^i v^j - \alpha_k(m)\Gamma_{ij}^k(m)w^i v^j.$$

Since  $d\alpha(m)(v, w) = \left( \frac{\partial \alpha_i}{\partial m^j} - \frac{\partial \alpha_j}{\partial m^i} \right) v^j w^i$ , we can see that (6) follows from the torsion free property,  $\Gamma_{ij}^k = \Gamma_{ji}^k$ .  $\square$

**Remark 2.1.** This proof is (formally) extendable to infinite dimensional manifolds by noting the irrelevance of the local coordinate description of  $\Gamma_{ij}^k$ . Alternatively, a true coordinate-free proof is given in [JV12, Proposition 2.4]. If  $E$  is a trivial bundle, then this construction can be extended to  $E$ -valued one-forms on  $M$  by defining the exterior derivative on a tensor product by

$$d(e \otimes \alpha) := e \otimes d\alpha$$

where  $e$  is a section of a the vector bundle  $\pi : E \rightarrow M$  and  $\alpha \in \Omega^1(M)$  is an ordinary one-form on  $M$ .  $\diamond$

**2.2. Diffeomorphism Groups.** Let  $M$  be a finite dimensional connected Riemannian manifold with metric  $\langle \cdot, \cdot \rangle_M : TM \oplus TM \rightarrow \mathbb{R}$ . The set of volume preserving diffeomorphisms,  $\text{SDiff}(M)$ , of  $M$  is an infinite dimensional Fréchet Lie group. A tangent vector  $v_\varphi \in T_\varphi \text{SDiff}(M)$  over a group element  $\varphi \in \text{SDiff}(M)$  is a map  $v_\varphi : M \rightarrow TM$  such that  $v_\varphi(m) \in T_{\varphi(m)}M$ . Let  $\mathfrak{X}_{\text{div}}(M)$  denote the vector space of divergence free vector fields on  $M$ . The *left* Lie algebra of  $\text{SDiff}(M)$ , i.e., the Lie algebra obtained by using the left invariant vector fields on  $\text{SDiff}(M)$ , is  $(\mathfrak{X}_{\text{div}}(M), -[\cdot, \cdot]_{\text{Jacobi-Lie}})$ , where  $[\cdot, \cdot]_{\text{Jacobi-Lie}}$  is the usual bracket of vector fields on  $M$  (locally, this means  $[u, v]_{\text{Jacobi-Lie}} = Dv \cdot u - Du \cdot v$ ). Therefore,  $T_\varphi \text{SDiff}(M) = \{u \circ \varphi \mid u \in \mathfrak{X}_{\text{div}}(M)\}$ .

Let  $\odot = (\odot_1, \dots, \odot_N) \in M^N$  be an  $N$ -tuple of distinct points in  $M$ . We define the isotropy group

$$(7) \quad G_\odot := \{\psi \in \text{SDiff}(M) \mid \psi(\odot_k) = \odot_k, k = 1, \dots, N\},$$

As a subgroup,  $G_\odot$  acts on  $\text{SDiff}(M)$  by composition on the right, namely,  $\text{SDiff}(M) \ni \varphi \mapsto \varphi \circ \psi \in \text{SDiff}(M)$  for  $\psi \in G_\odot$ . It is elementary to see that the quotient of  $\text{SDiff}(M)$  by the right action of  $G_\odot$  is the manifold

$$X := \{(m_1, \dots, m_N) \in M^N \mid m_i \neq m_j\}$$

with associated smooth projection  $\pi_X(\varphi) := (\varphi(\odot_1), \dots, \varphi(\odot_N))$ . In fact,  $\pi_X : \text{SDiff}(M) \rightarrow X$  is a right principal  $G_\odot$ -bundle. Note that if  $v_\varphi \in T_\varphi \text{SDiff}(M)$ , then  $T_\varphi \pi_X(v_\varphi) = (v_\varphi(\odot_1), \dots, v_\varphi(\odot_N)) \in TX$ .

To streamline notation, we will write  $\varphi(\odot) := (\varphi(\odot_1), \dots, \varphi(\odot_N)) \in X$ . Similarly, if  $v_\varphi \in T_\varphi \text{SDiff}(M)$  (a vector field covering  $\varphi$ ), we will write  $v_\varphi(\odot) := (v_\varphi(\odot_1), \dots, v_\varphi(\odot_N)) \in TX$ .

In §3 we will define a Lagrangian system on  $T \text{SDiff}(M)$  which is invariant under right multiplication by  $G_\odot$ . We will then implement Lagrange-Poincaré reduction along the lines of [CMR01] to obtain equations on the quotient space  $(T \text{SDiff}(M))/G_\odot$ . This task is non-trivial because  $(T \text{SDiff}(M))/G_\odot$  is not the same as  $T(\text{SDiff}(M)/G_\odot)$ . In particular,  $(T \text{SDiff}(M))/G_\odot$  is an infinite dimensional vector bundle over  $X$  and the reduced equations describe how the motion of a finite set of particles couples to the fluid.

**Remark 2.2.** We may consider applying the ideas contained in this paper to the full set of diffeomorphisms,  $\text{Diff}(M)$ . As our aim here is towards simulation of incompressible fluid equations, we have chosen to use  $\text{SDiff}(M)$ . However, extending the ideas to  $\text{Diff}(M)$  is not difficult, and such extensions may have some far reaching applications, such as in medical imaging ([BMTY05, BGBHR11, SNBP13]).  $\diamond$

**2.3. Interpolation Methods as Generalized Connections.** Define the vector bundle  $X$  given by

$$\tilde{\mathfrak{g}}_\odot := \{(x, \xi_x) \mid x \in X, \xi_x \in \mathfrak{g}_x\},$$

where  $\mathfrak{g}_x$  is the Lie algebra of the isotropy group  $G_x$  for each  $x \in X$ , i.e., the set of divergence free vector fields which vanish at the  $N$  particle locations described by  $x \in X \subset M^N$ <sup>1</sup>. Just as we have the ad-notation on a Lie algebra, we can utilize the ad-notation on the Lie algebra bundle  $\tilde{\mathfrak{g}}_\odot$ . For each  $(x, \xi_x) \in \tilde{\mathfrak{g}}_\odot(x)$  we let  $\text{ad}_{(x, \xi_x)} : \tilde{\mathfrak{g}}_\odot(x) \rightarrow \tilde{\mathfrak{g}}_\odot(x)$  denote the linear endomorphism

$$(8) \quad \text{ad}_{(x, \xi_x)}(x, \eta_x) := [(x, \xi_x), (x, \eta_x)] := (x, -[\xi_x, \eta_x]_{\text{Jacobi-Lie}}),$$

where index “Jacobi-Lie” refers to the usual bracket of vector fields on a manifold. Additionally, we let  $\text{ad}_{(x, \xi_x)}^* : \tilde{\mathfrak{g}}_\odot^*(x) \rightarrow \tilde{\mathfrak{g}}_\odot^*(x)$  denote the dual endomorphism to  $\text{ad}_{(x, \xi_x)}$  on the dual vector-bundle  $\tilde{\mathfrak{g}}_\odot^*$ .

We will ultimately identify the quotient  $(T \text{SDiff}(M))/G_\odot$  with  $TX \oplus \tilde{\mathfrak{g}}_\odot$ . However, this identification is *not* canonical. It turns out that choosing such an identification boils down to the choice of an *interpolation method*.

**Definition 2.4.** A  $\mathfrak{X}_{\text{div}}(M)$ -valued one-form  $\mathcal{I} \in \Omega^1(X; \mathfrak{X}_{\text{div}}(M))$  on  $X$  such that  $\mathcal{I}(\dot{x}_1, \dots, \dot{x}_N)(x_k) = \dot{x}_k$  for all  $k = 1, \dots, N$ ,  $\dot{x} \in TX$ , and  $(x_1, \dots, x_N) = \tau_X(\dot{x}_1, \dots, \dot{x}_N)$  is called an interpolation method (see Figure 1), where  $\tau_X : TX \rightarrow X$  is the tangent bundle projection.

<sup>1</sup>The bundle  $\tilde{\mathfrak{g}}_\odot$  is identical to the adjoint bundle  $\frac{\text{SDiff}(M) \times \mathfrak{g}_\odot}{G_\odot}$  when equipped with the fiberwise Lie bracket  $[(x, \xi_x), (x, \eta_x)] := (x, -[\xi_x, \eta_x]_{\text{Jacobi-Lie}})$  and the projection  $\tilde{\pi}(x, \xi_x) = x$ .



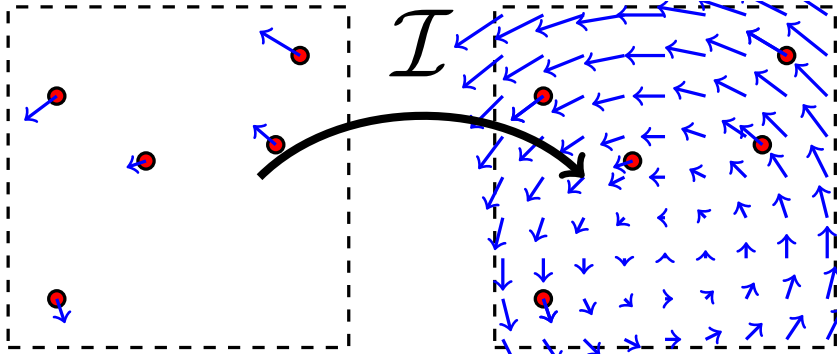


FIGURE 1. Schematic representation of an Interpolation Method

**Example 2.1.** In the case of Euler fluids, one could desire an interpolation method,  $\mathcal{I} \in \Omega^1(X; \mathfrak{X}_{\text{div}}(M))$ , such that

$$(9) \quad \int_M \langle \mathcal{I}(\dot{x})(m), \xi_x(m) \rangle d\text{vol}(m) = 0 \quad , \quad \text{for all } (x, \xi_x) \in \tilde{\mathfrak{g}}_{\odot}.$$

Such an interpolation method would correspond to choosing the *mechanical connection* [MMR90, §2.4]. However, no such interpolation method exists. For if  $\dot{x} \in T_x X$  is non-zero, then the vector field  $\mathcal{I}(\dot{x})$  would need to vanish on the subset of  $M$  complementary to the particles and simultaneously be non-zero when evaluated on at least one of the particles. This does not define a smooth vector field and thus we can not expect to find an interpolation method which satisfies (9). Nonetheless, regularized constructions can be made. For example, if  $M = \mathbb{R}^d$ , and  $\mathbb{I} : \mathfrak{X}(\mathbb{R}^d) \rightarrow \mathfrak{X}(\mathbb{R}^d)$  is a positive definite  $\text{SE}(d)$ -invariant operator ( $\text{SE}(d)$  denotes the special Euclidean group of proper rotations and translations in  $\mathbb{R}^d$ ), we may define the inner product

$$\langle u, v \rangle_{\mathbb{I}} = \int_{\mathbb{R}^d} u(m) \cdot [\mathbb{I}v](m) d\text{vol}(m).$$

If the Green's function  $G(\|x^i\|)$  associated to  $\mathbb{I}$  is a continuous function, then  $\mathbb{I}$  naturally induces an interpolation method

$$\mathcal{I}(\dot{x})(m) = \sum_i G(\|m - x_i\|) \dot{x}^i.$$

For example, if  $\mathbb{I} = 1 - \alpha^2 \Delta$  for some  $\alpha > 0$ , then  $G(\|x\|) = \exp(-\|x\|/\alpha)$ . This is not directly applicable in the context of ideal incompressible fluids since this interpolation method does not produce divergence free vector fields and the operator  $1 - \alpha^2 \Delta$  is not naturally identified with ideal fluids. However, this construction is natural in the case of the EPDiff equation with respect to the Lagrangian induced by the  $H^1$ -norm [HSS09, part II]. This construction has been generalized to inertia

operators of the form

$$\mathbb{I} = \left(1 - \frac{\alpha^2}{p} \Delta\right)^p \left(1 - \frac{1}{\epsilon^2} \operatorname{div} \circ \nabla\right)$$

for  $p \geq \frac{\dim(M)+3}{2}$  and  $\epsilon > 0$  to products Greens functions of higher differentiability. This would produce interpolation methods of higher differentiability as well, see [MMar].  $\diamond$

**Remark 2.3.** Even though we shall formulate all constructions in terms of an interpolation method  $\mathcal{I}$ , we want to point out there is a bijective correspondence between interpolation methods and principal connections on the right  $G_\odot$ -bundle  $\pi : \operatorname{SDiff}(M) \ni \varphi \mapsto \varphi(\odot) \in X$  (see, e.g., [Ble81], [KMS99], or [MMR90] adapted for right actions). We have  $T_\varphi \pi(v_\varphi) = v_\varphi(\odot)$ , for any  $v_\varphi \in T_\varphi \operatorname{SDiff}(M)$  (a vector field covering  $\varphi$ , i.e.,  $v_\varphi : M \rightarrow TM$  satisfies  $v_\varphi(m) \in T_{\varphi(m)}M$  for every  $m \in M$ ).

Recall that if  $\pi : Q \rightarrow S$  is a right principal  $G$ -bundle and  $\mathfrak{g}$  is the Lie algebra of  $G$ , then a *right equivariant principal connection* on  $Q$  is a  $\mathfrak{g}$ -valued one-form  $A \in \Omega^1(Q; \mathfrak{g})$ , satisfying the following properties:

- (1) For each  $\xi \in \mathfrak{g}$ , we have  $A(\xi_Q) = \xi$ , where  $\xi_Q \in \mathfrak{X}(Q)$ , defined by  $\xi_Q(q) := \left. \frac{d}{dt} \right|_{t=0} q \cdot \exp(t\xi)$  for any  $q \in Q$ , is the infinitesimal generator of  $\xi$ .
- (2) For each  $g \in G$  and  $v \in TQ$  we have  $A(v \cdot g) = \operatorname{Ad}_g^{-1}(A(v))$ .

If an interpolation method  $\mathcal{I} : T \rightarrow \mathfrak{X}_{\operatorname{div}}(M)$  is given, then

$$A(v_\varphi) := T\varphi^{-1} \circ v_\varphi - \varphi^*(\mathcal{I}(v_\varphi(\odot))), \quad \varphi \in \operatorname{SDiff}(M), \quad v_\varphi \in T_\varphi \operatorname{SDiff}(M),$$

defines a right principal connection one-form  $A \in \Omega^1(\operatorname{SDiff}(M); \mathfrak{g}_\odot)$ , as a direct verification shows. Since  $\{v_\varphi \in T_\varphi \operatorname{SDiff}(M) \mid v_\varphi = \mathcal{I}(v_\varphi(\odot)) \circ \varphi\}$  is the horizontal space defined by  $A$ , it is easily seen that the associated horizontal lift has the expression

$$h_\varphi^\uparrow(\dot{x}) = \mathcal{I}(\dot{x}) \circ \varphi, \quad x = \varphi(\odot), \quad \dot{x} \in T_x X.$$

Conversely, given a right principal connection one-form  $A \in \Omega^1(\operatorname{SDiff}(M); \mathfrak{g}_\odot)$ , it is easy to see that it defines an interpolation method  $\mathcal{I} : TX \rightarrow \mathfrak{X}_{\operatorname{div}}(M)$  by

$$\mathcal{I}(T_\varphi \pi(v_\varphi)) := v_\varphi \circ \varphi^{-1} - \varphi_* A(v_\varphi).$$

In addition, the principal connection induced by this  $\mathcal{I}$ , returns the original  $A$ , which proves the stated bijective correspondence between interpolation methods and principal connections.  $\diamond$

Return to the general case and introduce the notation  $(x, \xi_x, \dot{x}, \dot{\xi}_x) \in T\tilde{\mathfrak{g}}_\odot$  for tangent vectors at  $(x, \xi_x)$  to  $\tilde{\mathfrak{g}}_\odot$ . Define the *horizontal space* at  $(x, \xi_x)$  induced by  $\mathcal{I}$  to be the vector subspace of  $T_{(x, \xi_x)}\tilde{\mathfrak{g}}_\odot$  consisting of vectors of the form

$$(x, \xi_x, \dot{x}, [\xi_x, \mathcal{I}(\dot{x})]_{\operatorname{Jacobi-Lie}}) \in T\tilde{\mathfrak{g}}_\odot.$$

Thus, the horizontal and vertical projections are

$$(10) \quad \text{hor}(x, \xi_x, \dot{x}, \dot{\xi}_x) = (x, \xi_x, \dot{x}, [\xi_x, \mathcal{I}(\dot{x})]_{\text{Jacobi-Lie}})$$

$$(11) \quad \text{ver}(x, \xi_x, \dot{x}, \dot{\xi}_x) = \left( x, \xi_x, 0, \dot{\xi}_x - [\xi_x, \mathcal{I}(\dot{x})]_{\text{Jacobi-Lie}} \right).$$

**Proposition 2.2.** *The covariant derivative induced by the horizontal projection (10) is the  $t$ -curve in  $\tilde{\mathfrak{g}}_\odot$  given by*

$$(12) \quad \frac{D(x, \xi_x)}{Dt} = \left( x, \frac{d\xi_x}{dt} - \left[ \xi_x, \mathcal{I} \left( \frac{dx}{dt} \right) \right]_{\text{Jacobi-Lie}} \right).$$

*Proof.* Let  $v = \frac{d}{dt}(x, \xi_x)$ , so that the vertical and horizontal projections are  $\text{ver}(v) = v - \text{hor}(v)$ , and  $\text{hor}(v) = (x, \xi_x, \dot{x}, [\xi_x, \mathcal{I}(\dot{x})]_{\text{Jacobi-Lie}})$ , respectively. Applying Definition 2.2, we conclude

$$\frac{D(x, \xi_x)}{Dt} = v_\downarrow \left( \text{ver} \left( \frac{d}{dt}(x, \xi_x) \right) \right) = \left( x, \frac{d\xi_x}{dt} - \left[ \xi_x, \mathcal{I} \left( \frac{dx}{dt} \right) \right]_{\text{Jacobi-Lie}} \right),$$

as stated.  $\square$

**Proposition 2.3.** *Given an interpolation method,  $\mathcal{I} : TX \rightarrow \mathfrak{X}_{\text{div}}(M)$ , the map  $\Psi_{\mathcal{I}} : (T \text{SDiff}(M))/G_\odot \rightarrow TX \oplus \tilde{\mathfrak{g}}_\odot$  given by*

$$\Psi_{\mathcal{I}}([v_\varphi]) = (v_\varphi(\odot), v_\varphi \circ \varphi^{-1} - \mathcal{I}(v_\varphi(\odot)))$$

*is an isomorphism of vector bundles, where  $v_\varphi \in T_\varphi \text{SDiff}(M)$ , and  $[v_\varphi]$  is the  $G_\odot$ -equivalence class of  $v_\varphi$ .*

*Proof.* We first must show that  $\Psi_{\mathcal{I}}$  is well defined on  $(T \text{SDiff}(M))/G_\odot$ . Let  $\psi \in G_\odot$ ; note that

$$\begin{aligned} \Psi_{\mathcal{I}}([v_\varphi \circ \psi]) &= (v_\varphi(\psi(\odot)), (v_\varphi \circ \psi) \circ (\varphi \circ \psi)^{-1} - \mathcal{I}(v_\varphi(\psi(\odot)))) \\ &= (v_\varphi(\odot), v_\varphi \circ \varphi^{-1} - \mathcal{I}(v_\varphi(\odot))) \\ &= \Psi_{\mathcal{I}}([v_\varphi]). \end{aligned}$$

It follows immediately from Definition 2.4 that  $(v_\varphi \circ \varphi - \mathcal{I}(v_\varphi(\odot)))(\varphi(\odot)) = 0$  which shows that  $\Psi_{\mathcal{I}} : (T \text{SDiff}(M))/G_\odot \rightarrow TX \oplus \tilde{\mathfrak{g}}_\odot$  is well-defined.

Additionally, it is easy to check that  $\Psi_{\mathcal{I}}$  has the inverse  $\Psi_{\mathcal{I}}^{-1}(x, \dot{x}, \xi_x) = [u \circ \varphi]$  where  $u = \xi_x + \mathcal{I}(\dot{x})$  and  $\varphi \in \text{SDiff}(M)$  is an arbitrary diffeomorphism such that  $x = \varphi(\odot)$ . A direct verification shows that  $\Psi_{\mathcal{I}} : T \text{SDiff}(M)/G_\odot \rightarrow TX \oplus \tilde{\mathfrak{g}}_\odot$  is a vector bundle map.  $\square$

The importance of Proposition 2.3 is that it will allow us to transport objects defined on  $T \text{SDiff}(M)/G_\odot$  to objects defined on  $TX \oplus \tilde{\mathfrak{g}}_\odot$  (the latter space being more intuitive). In particular, we can express the equations of motion for an ideal fluid on  $TX \oplus \tilde{\mathfrak{g}}_\odot$ . Moreover, while the  $TX$  component represents the motion of the particles, the  $\tilde{\mathfrak{g}}_\odot$  component represents the residual, which results from using  $\mathcal{I}(\dot{x})$  as an estimate of the velocity field of the fluid on  $M$ . These observations will inspire particle methods for fluids wherein the error analysis is “built-in”.

## 3. LAGRANGIAN REDUCTION AND THE EQUATIONS OF MOTION

In this section we will use Proposition 2.3 to express the equations of motion for a  $G_\odot$ -invariant Lagrangian system on  $\text{SDiff}(M)$  on the space  $TX \oplus \tilde{\mathfrak{g}}_\odot$ . Concretely, we carry out the program in [CMR01] for this example. However, instead of just quoting the relevant abstract formulas and applying them to our case, we prefer to derive them by hand because we focus on interpolation methods as opposed to connections (see Remark 2.3) and want to keep the present paper self-contained.

Before we do this, however, we would like to motivate this task by considering the example of an ideal fluid. To begin, the kinetic energy of an ideal fluid flowing on  $M$ , denoted  $L_{\text{Euler}} : T\text{SDiff}(M) \rightarrow \mathbb{R}$ , is given by

$$(13) \quad L_{\text{Euler}}(\varphi, \dot{\varphi}) = \frac{\rho}{2} \int_M \|\dot{\varphi}(m)\|^2 d\text{vol}(m),$$

where  $\rho$  denotes the density of the fluid, assumed to be constant. It was shown in [Arn66] that  $L_{\text{Euler}}$  is  $\text{SDiff}(M)$ -invariant and that the resulting Euler-Poincaré (a.k.a. Euler-Arnold) equations are precisely Euler's equations for an ideal, inviscid, homogeneous, incompressible fluid

$$\frac{\partial u}{\partial t} + \nabla_u u = -\frac{\nabla p}{\rho}, \quad \text{div } u = 0, \quad u(m) \in T_m(\partial M) \text{ if } m \in \partial M,$$

for any oriented Riemannian manifold  $M$  with smooth boundary  $\partial M$ . This result can be proven from a number of perspectives; we will focus here on the variational method. The equations of motion on  $T\text{SDiff}(M)$  are the Euler-Lagrange equations

$$\frac{D}{Dt} \left( \frac{\partial L_{\text{Euler}}}{\partial \dot{\varphi}} \right) - \frac{\partial L_{\text{Euler}}}{\partial \varphi} = 0.$$

The integral curves of the Euler-Lagrange equations are known to extremize the action integral

$$S[\varphi_t] = \int_0^1 L_{\text{Euler}}(\varphi_t, \dot{\varphi}_t) dt$$

with respect to variations with fixed end-points at  $t = 0$  and  $t = 1$ . Conversely, curves which extremize  $S$  must satisfy the Euler-Lagrange equations. This variational principle is known as *Hamilton's principle*, and is a central mechanism for deriving equations of motion for conservative mechanical systems [AM78, §3]. In particular, one can derive reduced equations of motion on  $\mathfrak{X}_{\text{div}}(M) \equiv (T\text{SDiff}(M))/\text{SDiff}(M)$  by reducing Hamilton's principle. This means that we must understand how a variation of a curve  $\varphi_t \in \text{SDiff}(M)$  induces variations of  $u_t = \dot{\varphi}_t \circ \varphi_t^{-1} \in \mathfrak{X}_{\text{div}}(M)$ . Understanding the relationship between variations of  $\varphi_t$  and  $u$  allows one to obtain a variational principle on  $\mathfrak{X}_{\text{div}}(M)$  which is equivalent to Hamilton's principle (up to a phase). Moreover, this variational principle on  $\mathfrak{X}_{\text{div}}(M)$  induces equations of motion which are equivalent to Euler's equations for an ideal incompressible homogenous fluid. In other words, Euler's fluid equations are the evolution equations obtained by reducing Euler-Lagrange equations

on  $T\text{SDiff}(M)$  by a (right)  $\text{SDiff}(M)$  symmetry [Arn66] (see also [AM78, §5.5], [AK92], and [HSS09]).

In this section we shall do a reduction by  $G_\odot \subset \text{SDiff}(M)$  for an arbitrary  $G_\odot$ -invariant Lagrangian  $L : T\text{SDiff}(M) \rightarrow \mathbb{R}$  (such as  $L_{\text{Euler}}$ ) to derive an evolution equation on  $TX \oplus \tilde{\mathfrak{g}}_\odot$ . Of course, the resulting equations of motion yield the same dynamics as Euler's fluid equations when we choose the Lagrangian  $L_{\text{Euler}}$ . However, despite producing the same dynamics, the use of the interpolation method heavily influences how one writes down the equations on  $TX \oplus \tilde{\mathfrak{g}}_\odot$ . As in the case of reduction by  $\text{SDiff}(M)$ , we must first study how variations of curves in  $\text{SDiff}(M)$  lead to variations of curves in  $TX \oplus \tilde{\mathfrak{g}}_\odot$ . This will allow us to define a variational principle on  $TX \oplus \tilde{\mathfrak{g}}_\odot$  which yields the correct equations of motion.

**3.1. Covariant Variations.** Let  $\varphi_t$  be a curve in  $\text{SDiff}(M)$ . A deformation of  $\varphi_t$  is a two parameter family of diffeomorphisms,  $\varphi_{\lambda,t}$ , such that  $\varphi_{0,t} = \varphi_t$ . We desire to measure how much the variation  $\delta\varphi_t := \left. \frac{\partial\varphi_{t,\lambda}}{\partial\lambda} \right|_{\lambda=0}$  (a  $t$ -curve in  $T\text{SDiff}(M)$  covering  $t \mapsto \varphi_t$ ) induces a variation in the quantity  $(x, \xi_x)_t := (x(t), \dot{\varphi}_t \circ \varphi_t^{-1} - \mathcal{I}(\dot{x}(t))) \in \tilde{\mathfrak{g}}_\odot$  where  $x(t) = \varphi_t(\odot)$  and  $\dot{\varphi}_t = \frac{d\varphi_t}{dt}$ . To do this, we invoke the covariant derivative induced by  $\mathcal{I}$  in Proposition 2.2 to define the *covariant variation* of a curve  $(x, \xi_x)_t \in \tilde{\mathfrak{g}}_\odot$  with respect to a deformation  $(x, \xi_x)_{t,\lambda}$  as the quantity

$$(14) \quad \delta^{\mathcal{I}}(x, \xi_x)_t := \left. \frac{D(x, \xi_x)_{t,\lambda}}{D\lambda} \right|_{\lambda=0} \in \tilde{\mathfrak{g}}_\odot(x(t)).$$

While this produces arbitrary variation of curves in  $\tilde{\mathfrak{g}}_\odot$ , we will only be concerned with variations induced by variations of curves in  $\text{SDiff}(M)$ . The following propositions describe the form of such variations.

**Proposition 3.1.** *Let  $\varphi_t$  be a curve in  $\text{SDiff}(M)$ . Then, a vertical deformation of  $\varphi_t$  is necessarily given by  $\varphi_{t,\lambda} = \varphi_t \circ \psi_{t,\lambda}$  for a 2-parameter family  $\psi_{t,\lambda} \in G_\odot$  satisfying  $\psi_{t,0} = \text{id}$ . Set  $x(t, \lambda) := \varphi_{t,\lambda}(\odot)$  and*

$$\xi_x(t, \lambda) := \frac{\partial\varphi_{t,\lambda}}{\partial t} \circ \varphi_{t,\lambda}^{-1} - \mathcal{I} \left( \frac{\partial x}{\partial t}(t, \lambda) \right),$$

so that we have a 2-parameter family  $(x, \xi_x)_{t,\lambda} \in \tilde{\mathfrak{g}}_\odot$ . The covariant variation of  $(x, \xi_x)_{t,\lambda}$  with respect to  $\lambda$  (and with  $t$ -argument suppressed) is

$$\delta^{\mathcal{I}}(x, \xi_x) = \frac{D(x, \eta_x)}{Dt} - [(x, \xi_x), (x, \eta_x)] = \frac{D(x, \eta_x)}{Dt} + (x, [\xi_x, \eta_x]_{\text{Jacobi-Lie}}),$$

where  $\eta_x := (\varphi_t)_* \left( \left. \frac{\partial\psi_{t,\lambda}}{\partial\lambda} \right|_{\lambda=0} \right) \in (\tilde{\mathfrak{g}}_\odot)_x$ .

*Proof.* If we let  $\delta = \left. \frac{\partial}{\partial\lambda} \right|_{\lambda=0}$  then we can see that  $\delta x = 0$  since  $x = \varphi_t(\psi_{t,\lambda}(\odot)) = \varphi_t(\odot)$  does not depend on  $\lambda$ . Moreover, by Proposition 2.2 we find

$$\delta^{\mathcal{I}}(x, \xi_x) = (x, \delta\xi_x).$$

Next we calculate  $\delta\xi_x$ . To do this, define the spatial velocity field  $u = \dot{\varphi} \circ \varphi^{-1}$  so that  $\xi_x = u - \mathcal{I}(\dot{x})$ . Then we find

$$\delta\xi_x = \delta u - \delta(\mathcal{I}(\dot{x})).$$

However, as  $x(t)$  does not depend on  $\lambda$ , we have  $\delta(\mathcal{I}(\dot{x})) = 0$ . Thus, by the Lin constraints derived in appendix A and the identity  $\delta\varphi \circ \varphi^{-1} = \eta_x$ , we have

$$\begin{aligned} \delta\xi_x &= \delta u \stackrel{(35)}{=} \frac{\partial\eta_x}{\partial t} - [\eta_x, u]_{\text{Jacobi-Lie}} \\ &= \frac{\partial\eta_x}{\partial t} - [\eta_x, \mathcal{I}(\dot{x})]_{\text{Jacobi-Lie}} - [\eta_x, \xi_x]_{\text{Jacobi-Lie}}. \end{aligned}$$

Therefore,

$$\begin{aligned} \delta^{\mathcal{I}}(x, \xi_x) &= (x, \delta\xi_x) = \left( x, \frac{\partial\eta_x}{\partial t} - [\eta_x, \mathcal{I}(\dot{x})]_{\text{Jacobi-Lie}} - [\eta_x, \xi_x]_{\text{Jacobi-Lie}} \right) \\ &= \left( x, \frac{\partial\eta_x}{\partial t} - [\eta_x, \mathcal{I}(\dot{x})]_{\text{Jacobi-Lie}} \right) - (x, [\eta_x, \xi_x]_{\text{Jacobi-Lie}}) \\ &= \frac{D}{Dt}(x, \eta_x) + [(x, \eta_x), (x, \xi_x)] \end{aligned}$$

by Proposition 2.2 and (8).  $\square$

While the form of covariant variations induced by vertical variations is now clear, we must also consider how  $(x, \xi_x) = (x, \dot{\varphi} \circ \varphi^{-1} - \mathcal{I}(\dot{x})) \in \tilde{\mathfrak{g}}_{\odot}$  varies in response to variations of  $x = \varphi_t(\odot) \in X$ . Given a curve  $\varphi_t \in \text{SDiff}(M)$  we may take a deformation of the curve  $x(t) = \varphi_t(\odot) \in X$  given by  $x(t, \lambda)$ . Define  $\delta x(t, \lambda) := \frac{\partial}{\partial \lambda} x(t, \lambda) \in T_{x(t, \lambda)} X$ . Thus,  $\mathcal{I}(\delta x(t, \lambda)) \in \mathfrak{X}_{\text{div}}(M)$ . For each fixed  $t$ ,  $\lambda \mapsto \mathcal{I}(\delta x(t, \lambda))$  is a  $\lambda$ -dependent family of divergence free vector fields on  $M$ . Denote by  $\text{Fl}_{\lambda}^{\mathcal{I}(\delta x(t, \lambda))}$  the evolution operator of this  $\lambda$ -dependent vector field which at  $\lambda = 0$  is the identity diffeomorphism on  $M$ . Define the horizontal deformation of  $\varphi_t$  by

$$(15) \quad \varphi_{t, \lambda} := \text{Fl}_{\lambda}^{\mathcal{I}(\delta x(t, \lambda))} \circ \varphi_t \in \text{SDiff}(M).$$

Therefore

$$(16) \quad \delta\varphi_t := \left. \frac{\partial}{\partial \lambda} \right|_{\lambda=0} \varphi_{t, \lambda} = \mathcal{I}(\delta x(t, 0)) \circ \varphi_t.$$

In addition, by Definition 2.4, for fixed  $t$ ,  $\lambda \mapsto x_k(t, \lambda)$  is an integral curve of  $\mathcal{I}(\delta x(t, \lambda))$  which at  $\lambda = 0$  passes through  $x_k(t)$  and thus, by uniqueness of integral curves, we have

$$x_k(t, \lambda) = \text{Fl}_{\lambda}^{\mathcal{I}(\delta x(t, \lambda))}(x_k(t)).$$

Recall from Definition 2.4, that an interpolation method is an element  $\mathcal{I} \in \Omega^1(X; \mathfrak{X}_{\text{div}}(M))$ , such that  $\mathcal{I}(\dot{x})(x) = \dot{x}$ , for all  $\dot{x} \in T_x X$ . We want to define the exterior derivative  $d\mathcal{I}$  in a way which is consistent with the exterior derivative

on  $\Omega^1(X)$ . Ultimately, this amounts to the construction described in remark 2.1. However, for the sake of additional concreteness we can construct this exterior derivative by considering the ordinary one form  $[\alpha] \circ \mathcal{I} \in \Omega^1(M)$  obtained for an element of the dual space  $[\alpha] \in \mathfrak{X}_{\text{div}}(M)^*$ . At this point it is useful to recall what the (smooth) dual space of  $\mathfrak{X}_{\text{div}}(M)$  is. We recall (see [MW83]) that  $\mathfrak{X}_{\text{div}}(M)^*$  can be identified with  $\Omega^1(M)/dC^\infty(M)$  via the weakly non-degenerate pairing

$$\langle [\alpha], X \rangle := \int_M \alpha(X) \mu,$$

where  $\mu \in \Omega^n(M)$  is the the Riemannian volume form on  $M$  (recall that  $(M, g)$  is an oriented Riemannian manifold, possibly with boundary, for which the Hodge decomposition theorem holds). This follows from the Hodge decomposition theorem for one-forms.

So, for any element  $[\alpha] \in \Omega^1(M)/dC^\infty(M) \cong \mathfrak{X}_{\text{div}}(M)^*$ , the composition  $[\alpha] \circ \mathcal{I} : TX \rightarrow \mathbb{R}$  is a usual one-form on  $X$ , given by

$$([\alpha] \circ \mathcal{I})(\delta x) := \int_M \alpha(\mathcal{I}(\delta x)) \mu, \quad \text{for all } \delta x \in T_x X.$$

We define the exterior derivative  $d\mathcal{I}$  of  $\mathcal{I}$ , to be the unique  $\mathfrak{X}_{\text{div}}(M)$ -valued two-form on  $X$  such that  $[\alpha] \circ d\mathcal{I} = d([\alpha] \circ \mathcal{I})$  for any  $\alpha \in \Omega^1(M)$ .

Next, we turn to the definition of the covariant derivative  $\frac{\partial \mathcal{I}}{\partial x}$  of  $\mathcal{I}$  relative to the base point in  $X$ . By Definition 2.3,  $\frac{\partial([\alpha] \circ \mathcal{I})}{\partial x} : TX \rightarrow T^*X$  is a fiber bundle map covering the identity. In complete analogy with the definition of  $d\mathcal{I}$ , we define the map  $\frac{\partial \mathcal{I}}{\partial x} : TX \rightarrow T^*X \otimes \mathfrak{X}_{\text{div}}(M)$  by

$$[\alpha] \left( \left\langle \frac{\partial \mathcal{I}}{\partial x}(\dot{x}), \delta x \right\rangle \right) = \left\langle \frac{\partial([\alpha] \circ \mathcal{I})}{\partial x}(\dot{x}), \delta x \right\rangle, \quad \text{for all } \dot{x}, \delta x \in T_x X.$$

This is the standard definition of the covariant derivative of a vector valued one-form on a Riemannian manifold (see, e.g., [CMR01, Definition 3.3.3]).

More explicitly, we can locally write  $\mathcal{I} = \varepsilon^i \otimes v_i$  for a finite number of local vector field valued functions  $v_1, \dots, v_n \in C^\infty(X; \mathfrak{X}_{\text{div}}(M))$  and a local basis of one-forms  $\varepsilon^1, \dots, \varepsilon^n \in \Omega^1(X)$ , where  $n := \dim X$ . Then, a direct computation using Definition 2.3 and (5) shows that

$$\frac{\partial \mathcal{I}}{\partial x}(\dot{x}) = (\varepsilon^i(x)(\dot{x})) dv_i(x) + \frac{\partial \varepsilon^i}{\partial x}(\dot{x}) \otimes v_i(x) \in T_x^*X \otimes \mathfrak{X}_{\text{div}}(M),$$

where  $\frac{\partial \varepsilon^i}{\partial x}$  is the covariant derivative of  $\varepsilon^i$  in Definition 2.3 (viewing  $\varepsilon^i$  as a smooth function on  $TX$ ) and  $dv_i$  is the exterior derivative of  $v_i \in C^\infty(X; \mathfrak{X}_{\text{div}}(M))$ .

While  $\frac{\partial \mathcal{I}}{\partial x}$  provides a measure of how much the value of  $\mathcal{I}$  varies as we change the base point of an element of  $TX$ , we would also like to describe how  $\mathcal{I}$  varies with respect to changes in the velocity vector of  $TX$  while holding the base point fixed, i.e., we need the fiber derivative of  $\mathcal{I}$  (see (1)). Since  $\mathcal{I}$  is linear in the velocity variable (by Definition 2.4), it follows that the fiber derivative of  $\mathcal{I}$  is  $\mathcal{I}$  itself.

Putting all these remarks together, it follows that along a smooth curve  $\lambda \mapsto \dot{x}_\lambda \in TX$  covering the curve  $\lambda \mapsto x_\lambda \in X$  with  $\dot{x}_\lambda|_{\lambda=0} = \dot{x}$  and  $\frac{d}{d\lambda}|_{\lambda=0} x_\lambda = \delta x$ , by equation (4), we have

$$(17) \quad \frac{d}{d\lambda}\Big|_{\lambda=0} \mathcal{I}(\dot{x}) = \left\langle \frac{\partial \mathcal{I}}{\partial x}(\dot{x}), \delta x \right\rangle + \mathcal{I} \left( \frac{D\dot{x}}{D\lambda}\Big|_{\lambda=0} \right) \in \mathfrak{X}_{\text{div}}(M).$$

This formula allows us to express horizontal variations in a particularly simple form.

**Proposition 3.2.** *Let  $\varphi_t$  be a curve in  $\text{SDiff}(M)$  and  $x(t) = \varphi_t(\odot)$ . Let  $x_{t,\lambda}$  be a deformation of  $x_t$  and  $\varphi_{t,\lambda}$  the resulting horizontal deformation given by equation (15). Then the covariant variation of  $(x, \xi_x)$ , where  $\xi_x := \dot{\varphi} \circ \varphi^{-1} - \mathcal{I}(\dot{x})$ , is given by*

$$\delta^{\mathcal{I}}(x, \xi_x) = \tilde{B}(\dot{x}, \delta x),$$

where  $\tilde{B}$  is the  $\tilde{\mathfrak{g}}_\odot$ -valued two-form on  $X$  given by the expression

$$(18) \quad \tilde{B}(\dot{x}, \delta x) = (x, d\mathcal{I}(\dot{x}, \delta x) + [\mathcal{I}(\dot{x}), \mathcal{I}(\delta x)]_{\text{Jacobi-Lie}}).$$

Before we begin the proof we would like to point out that  $\tilde{B}$  is the *reduced curvature tensor* of principal connection associated to  $\mathcal{I}$  in Remark 2.3. This relationship bridges the reductions being performed in this paper with those performed in [CMR01].

*Proof.* Define the spatial velocity  $u := \dot{\varphi} \circ \varphi^{-1} \in \mathfrak{X}_{\text{div}}(M)$ . Then we see that  $\xi_x = u - \mathcal{I}(\dot{x})$ . Let us now calculate the derivative of  $\xi_x$  with respect to  $\lambda$  at  $\lambda = 0$ . We find

$$\delta \xi_x = \delta u - \frac{\partial}{\partial \lambda}\Big|_{\lambda=0} (\mathcal{I}(\dot{x}))$$

Upon noting that  $\delta \varphi \circ \varphi^{-1} = \mathcal{I}(\delta x)$  we see by the Lin constraints derived in appendix A (see (35)) that

$$\delta u = \frac{\partial}{\partial t}(\mathcal{I}(\delta x)) - [\mathcal{I}(\delta x), u]_{\text{Jacobi-Lie}}$$

By (17) we find

$$\begin{aligned} \frac{\partial}{\partial \lambda}\Big|_{\lambda=0} (\mathcal{I}(\dot{x})) &= \left\langle \frac{\partial \mathcal{I}}{\partial x}(\dot{x}), \delta x \right\rangle + \mathcal{I} \left( \frac{D\dot{x}}{D\lambda} \right) \\ \frac{\partial}{\partial t}(\mathcal{I}(\delta x)) &= \left\langle \frac{\partial \mathcal{I}}{\partial x}(\delta x), \dot{x} \right\rangle + \mathcal{I} \left( \frac{D\delta x}{Dt} \right). \end{aligned}$$



We may now express  $\delta\xi_x$  as

$$\begin{aligned} \delta\xi_x = & \underbrace{\left\langle \frac{\partial \mathcal{I}}{\partial x}(\delta x), \dot{x} \right\rangle - \left\langle \frac{\partial \mathcal{I}}{\partial x}(\dot{x}), \delta x \right\rangle}_{T_1} + \underbrace{\mathcal{I} \left( \frac{D\delta x}{Dt} \right) - \mathcal{I} \left( \frac{D\dot{x}}{D\lambda} \Big|_{\lambda=0} \right)}_{T_2} \\ & - [\mathcal{I}(\delta x), u]_{\text{Jacobi-Lie}} \end{aligned}$$

By (6)  $T_1 = d\mathcal{I}(\dot{x}, \delta x)$ . Moreover, by the torsion free property of the Levi-Civita connection we find  $\frac{D\dot{x}}{D\lambda} \Big|_{\lambda=0} = \frac{D\delta x}{Dt}$ . This yields  $T_2 = 0$ . Finally substituting  $u = \xi_x + \mathcal{I}(\dot{x})$  we can express  $\delta\xi_x$  by

$$\delta\xi_x = d\mathcal{I}(\dot{x}, \delta x) - [\mathcal{I}(\delta x), \mathcal{I}(\dot{x})]_{\text{Jacobi-Lie}} - [\mathcal{I}(\delta x), \xi_x]_{\text{Jacobi-Lie}}$$

Now we apply Proposition 2.2. □

The reduced curvature tensor  $\tilde{B}$  measures the non-integrability of the distribution induced by  $\mathcal{I}$ .

Hamilton's principle considers variations of a curve  $\varphi_t \in \text{SDiff}(M)$ . These variations of  $\varphi_t$  induce a restricted class of variations of  $(x, \xi_x)$ . As a result of Propositions 3.1 and 3.2, we see that the most general covariant variations of  $(x, \xi_x) \in \tilde{\mathfrak{g}}_\odot$  that would appear in a reduction of Hamilton's principle, are of the form

$$(19) \quad \delta^{\mathcal{I}}(x, \xi_x) = \frac{D(x, \eta_x)}{Dt} + [(x, \eta_x), (x, \xi_x)] + \tilde{B}(\dot{x}, \delta x)$$

for some curve  $(x, \eta_x) \in \tilde{\mathfrak{g}}_\odot$  and a variation  $\delta x(t)$  of the curve  $x(t)$ . In the next section we will state this reduced variational principle explicitly.

**3.2. Lagrange-Poincaré Reduction.** In this section, we state the Lagrange-Poincaré reduction theorem (see [CMR01]) in terms of interpolation methods rather than principal connections. The resulting equations of motion are related to the Euler-Lagrange equations through the isomorphism,  $\Psi_{\mathcal{I}} : (T \text{SDiff}(M))/G_\odot \rightarrow TX \oplus \tilde{\mathfrak{g}}_\odot$ , of Proposition 2.3. Note that if a Lagrangian  $L : T \text{SDiff}(M) \rightarrow \mathbb{R}$  is  $G_\odot$ -invariant, then there exists a smooth function  $\ell : T \text{SDiff}(M)/G_\odot \rightarrow \mathbb{R}$  defined by  $\ell([\varphi, \dot{\varphi}]) = L(\varphi, \dot{\varphi})$  for each  $(\varphi, \dot{\varphi}) \in T \text{SDiff}(M)$ . By using  $\Psi_{\mathcal{I}}$  we can alternatively define  $\ell$  as a function on  $TX \oplus \tilde{\mathfrak{g}}_\odot$ <sup>2</sup>. For example, the reduced Lagrangian of  $L_{\text{Euler}}$ , denoted  $\ell_{\text{Euler}} : TX \oplus \tilde{\mathfrak{g}}_\odot \rightarrow \mathbb{R}$ , is given by

$$(20) \quad \ell_{\text{Euler}}(x, \dot{x}, \xi_x) = \frac{\rho}{2} \int_M \|\xi_x + \mathcal{I}(\dot{x})\|^2 d\text{vol}(m).$$

In order to write down the resulting equations of motion on the vector bundle  $TX \oplus \tilde{\mathfrak{g}}_\odot$ , it helps to note that there is a natural covariant derivative induced by

<sup>2</sup>We will abuse notation and use  $\ell$  to simultaneously denote a function on  $T \text{SDiff}(M)/G_\odot$  and  $TX \oplus \tilde{\mathfrak{g}}_\odot$ .

the metric on  $M$  and  $\mathcal{I}$ . In particular, we introduce the Riemannian metric on  $X$  given by

$$\langle v_x, w_x \rangle_X := \int_M \langle \mathcal{I}(v_x)(m), \mathcal{I}(w_x)(m) \rangle_M d\text{vol}(m).$$

We may use the Levi-Civita connection associated to  $\langle \cdot, \cdot \rangle_X$  to get a covariant derivative on  $TX$ . Taking the direct sum of the covariant derivative on  $X$  and the covariant derivative on  $\tilde{\mathfrak{g}}_\odot$  produces a covariant derivative on  $TX \oplus \tilde{\mathfrak{g}}_\odot$ . Let  $\frac{D}{Dt}$  be the covariant derivative along a curve relative to this direct sum covariant derivative on  $M$  and  $\tilde{\mathfrak{g}}_\odot$ . This is the final tool we require in order to express the reduced equations of motion.

**Theorem 3.1.** *Let  $L : T\text{SDiff}(M) \rightarrow \mathbb{R}$  be a  $G_\odot$ -invariant Lagrangian (for example, the kinetic energy Lagrangian given in (13)). Let  $\mathcal{I} : TX \rightarrow \mathfrak{X}_{\text{div}}(M)$  be an interpolation method and  $\ell : TX \oplus \tilde{\mathfrak{g}}_\odot \rightarrow \mathbb{R}$  the reduced Lagrangian. Let  $\varphi_t \in \text{SDiff}(M)$  be a curve and set  $(x, \dot{x}, \xi_x)(t) := \Psi_{\mathcal{I}}([\varphi_t, \dot{\varphi}_t])$ . Then the following are equivalent.*

- (i) *The curve  $\varphi_t$  is critical for the action*

$$S = \int_0^1 L(\varphi_t, \dot{\varphi}_t) dt$$

*with respect to variations  $\delta\varphi_t$  with fixed end points.*

- (ii) *The curve  $\varphi_t$  satisfies the Euler-Lagrange equations*

$$\frac{D}{Dt} \left( \frac{\partial L}{\partial \dot{\varphi}_t} \right) - \frac{\partial L}{\partial \varphi_t} = 0.$$

*with respect to an arbitrary covariant derivative on  $T\text{SDiff}(M)$ .*

- (iii) *The curve  $(x, \dot{x}, \xi_x)(t)$  is critical for the reduced action*

$$[S] = \int_0^1 \ell(x, \dot{x}, \xi_x)(t) dt$$

*with respect to arbitrary variations  $\delta x(t)$ , with fixed end points, and covariant variations of  $(x, \xi_x)$  of the form*

$$\delta \mathcal{I}(x, \xi_x) = \frac{D(x, \eta_x)}{Dt} + [(x, \eta_x), (x, \xi_x)] + \tilde{B}(\dot{x}, \delta x)$$

*for arbitrary curves  $(x, \eta_x)(t) \in \tilde{\mathfrak{g}}_\odot$  which cover  $x(t)$ .*

- (iv) *The curve  $(x, \dot{x}, \xi_x)(t)$  satisfies the Lagrange-Poincaré equations*

$$\begin{aligned} \frac{D}{Dt} \left( \frac{\partial \ell}{\partial \dot{x}} \right) - \frac{\partial \ell}{\partial x} &= i_{\dot{x}} \tilde{B}_{\partial \ell / \partial \xi_x} \quad \text{on } TX \\ \frac{D}{Dt} \left( \frac{\partial \ell}{\partial \xi_x} \right) &= -\text{ad}_{(x, \xi_x)}^* \left( \frac{\partial \ell}{\partial \xi_x} \right) \quad \text{on } \tilde{\mathfrak{g}}_\odot \end{aligned}$$

where  $\tilde{B}_{\partial\ell/\partial\xi_x}$  is the real-valued 2-form on  $X$  given by  $\tilde{B}_{\partial\ell/\partial\xi_x}(v_x, w_x) = \left\langle \frac{\partial\ell}{\partial\xi_x}, \tilde{B}(v_x, w_x) \right\rangle$ .

*Proof.* The equivalence of (i) and (ii) is an intrinsic formulation of the standard derivation of the Euler-Lagrange equations from Hamilton's variational principle (see, e.g., [AM78], [Arn00], [MR99]). We have chosen to write the intrinsic formulation more out of necessity than interest, as we are working on a space with non-trivial coordinate charts. In this case, the "equivalence of mixed partials" comes from our definition of the covariant derivative induced by a generalized connection. Specifically, let  $\varphi_{t,\lambda}$  be an embedding of a surface into  $\text{SDiff}(M)$  (i.e., a deformation of a curve). Then we observe that

$$(21) \quad \frac{D\dot{\varphi}_t}{D\lambda} = v_\downarrow \left( \text{ver} \left( \frac{\partial^2 \varphi_{t,\lambda}}{\partial t \partial \lambda} \Big|_{\lambda=0} \right) \right) = \frac{D\delta\varphi_t}{Dt}$$

where  $\dot{\varphi}_t = \frac{\partial\varphi_{t,0}}{\partial t}$  and  $\delta\varphi_t = \frac{\partial\varphi_{t,\lambda}}{\partial\lambda} \Big|_{\lambda=0}$ . Using this observation, one is able to prove the equivalence of (i) and (ii) using a standard integration by parts argument (see [AM78, Proposition 3.8.3] for a proof with coordinates or [JV12, Proposition 2.5] for a proof without coordinates).

We now prove the equivalence of (i) and (iii). By construction, the two actions  $S$  and  $[S]$  coincide on the indicated curves. If the action  $S$  is extremized along  $(\varphi_t, \dot{\varphi}_t)$ , then  $[S]$  must be extremized along  $(x, \dot{x}, \xi_x)(t) = \Psi_{\mathcal{I}}([\varphi_t, \dot{\varphi}_t])$  (see Proposition 2.3) with respect to variations induced by an arbitrary variation  $\delta\varphi_t$ . In particular, by Proposition 3.2, the contribution to the covariant variation  $\delta^{\mathcal{I}}\xi_x$  induced by the variation  $\delta x$  is  $\tilde{B}(\dot{x}, \delta x)$ . Secondly, by Proposition 3.1, the contribution to  $\delta^{\mathcal{I}}(x, \xi_x)$  due to the vertical component  $\eta_x = \delta\varphi_t \circ \varphi_t^{-1} - \mathcal{I}(\delta x)$  is given by  $\frac{D}{Dt}(x, \eta_x) - [(x, \xi_x), (x, \eta_x)]$ . In summary,  $\delta^{\mathcal{I}}(x, \xi_x)$  is given by (19). Thus (i) implies (iii).

Conversely, given arbitrary curves  $(x, \eta_x)(t) \in \tilde{\mathfrak{g}}_\odot$  and  $\delta x(t) \in TX$  covering  $x(t) \in X$ , define

$$\delta\varphi(t) := (\eta_x(t) + \mathcal{I}(\delta x(t)) \circ \varphi_t$$

and note that this is an arbitrary variation along the curve  $\varphi_t$ . Since  $S$  and  $[S]$  coincide along the curves  $(\varphi_t, \dot{\varphi}_t)$  and  $\Psi_{\mathcal{I}}([\delta\varphi_t, \dot{\varphi}_t]) = (x(t), \dot{x}(t), \xi_x(t))$ , respectively, and

$$\Psi_{\mathcal{I}}([\varphi, \delta\varphi]) = \left( x, \delta x, \frac{D}{Dt}(x, \eta_x) + [(x, \eta_x), (x, \xi_x)] + \tilde{B}(\dot{x}, \delta x) \right),$$

we see that  $\delta S = \delta[S]$ . This shows that (iii) implies (i).

Finally, we prove the equivalence of (iii) and (iv). Assume  $[S]$  is extremized with respect to the variations given in equation (19). Then we find that

$$\delta[S] = \frac{\partial}{\partial\lambda} \Big|_{\lambda=0} \int_0^1 \ell(x_\lambda, \dot{x}_\lambda, \dot{\xi}_{x,\lambda}) dt = \int_0^1 \langle d\ell, \delta(x, \dot{x}, \xi_x) \rangle dt.$$

We may use (4) to rewrite the exterior derivative of  $\ell$  using the covariant derivative on the vector bundle  $TX \oplus \tilde{\mathfrak{g}}_\odot$  to arrive at

$$\delta[S] = \int_0^1 \left( \left\langle \frac{\partial \ell}{\partial \xi_x}, \frac{D(x, \xi_x)}{D\lambda} \Big|_{\lambda=0} \right\rangle + \left\langle \frac{\partial \ell}{\partial \dot{x}}, \frac{D\dot{x}}{D\lambda} \Big|_{\lambda=0} \right\rangle + \left\langle \frac{\partial \ell}{\partial x}, \delta x \right\rangle \right) dt.$$

We can now make two substitutions. Firstly, by definition  $\delta^{\mathcal{I}}(x, \xi_x) := \frac{D(x, \xi_x)}{D\lambda} \Big|_{\lambda=0}$ , which we assume is given by (19) for some curve  $(x, \eta_x)_t \in \tilde{\mathfrak{g}}_\odot$  covering  $x(t)$ . Secondly, if we invoke Definition 2.2 with respect to the Levi-Civita connection on  $X$ , we observe

$$(22) \quad \frac{D\dot{x}}{D\lambda} \Big|_{\lambda=0} \stackrel{(2)}{=} v_\downarrow \left( \text{ver} \left( \frac{\partial}{\partial \lambda} \Big|_{\lambda=0} \left( \frac{\partial x}{\partial t} \right) \right) \right) = v_\downarrow \left( \text{ver} \left( \frac{\partial}{\partial t} \left( \frac{\partial x}{\partial \lambda} \Big|_{\lambda=0} \right) \right) \right) = \frac{D\delta x}{Dt}.$$

If we substitute (19) and (22) into our expression for  $\delta[S]$  we find

$$\begin{aligned} \delta[S] &= \int_0^1 \left\langle \frac{\partial \ell}{\partial \xi_x}, \frac{D(x, \eta_x)}{Dt} + [(x, \eta_x), (x, \xi_x)] + \tilde{B}(\dot{x}, \delta x) \right\rangle dt \\ &\quad + \int_0^1 \left( \left\langle \frac{\partial \ell}{\partial \dot{x}}, \frac{D\delta x}{Dt} \right\rangle + \left\langle \frac{\partial \ell}{\partial x}, \delta x \right\rangle \right) dt \end{aligned}$$

We separate  $\delta[S]$  into a part which is proportional to  $\delta x$  and a part which is proportional to  $\eta_x$ . We will call these components  $T_x$  and  $T_\eta$  respectively, so that  $\delta[S] = T_x + T_\eta$ . In particular,  $\delta[S]$  is zero with respect to arbitrary variations  $\delta x$  and  $\eta_x$  if and only if  $T_x$  and  $T_\eta$  are identically 0. We find that

$$T_\eta = \int_0^1 \left\langle \frac{\partial \ell}{\partial \xi_x}, \frac{D(x, \eta_x)}{Dt} + [(x, \eta_x), (x, \xi_x)] \right\rangle dt.$$

The definition of the covariant derivative on the dual-adjoint bundle  $\tilde{\mathfrak{g}}_\odot^*$  yields the equation

$$\left\langle \frac{\partial \ell}{\partial \xi_x}, \frac{D(x, \eta_x)}{Dt} \right\rangle = \frac{d}{dt} \left\langle \frac{\partial \ell}{\partial \xi_x}, (x, \eta_x) \right\rangle - \left\langle \frac{D}{Dt} \left( \frac{\partial \ell}{\partial \xi_x} \right), (x, \eta_x) \right\rangle$$

which we substitute into the expression for  $T_\eta$  to find

$$\begin{aligned} T_\eta &= \left[ \left\langle \frac{\partial \ell}{\partial \xi_x}, (x, \eta_x) \right\rangle \right] \Big|_{t=0}^{t=1} \\ &\quad - \int_0^1 \left( \left\langle \frac{D}{Dt} \left( \frac{\partial \ell}{\partial \xi_x} \right), (x, \eta_x) \right\rangle - \left\langle \frac{\partial \ell}{\partial \xi_x}, [(x, \eta_x), (x, \xi_x)] \right\rangle \right) dt \end{aligned}$$

As  $\eta_x = 0$  at time  $t = 0, 1$  the boundary term is 0. Moreover,

$$\begin{aligned} \left\langle \frac{\partial \ell}{\partial \xi_x}, [(x, \eta_x), (x, \xi_x)] \right\rangle &= \left\langle \frac{\partial \ell}{\partial \xi_x}, -\text{ad}_{(x, \xi_x)}(x, \eta_x) \right\rangle \\ &= \left\langle -\text{ad}_{(x, \xi_x)}^* \left( \frac{\partial \ell}{\partial \xi_x} \right), (x, \eta_x) \right\rangle. \end{aligned}$$

We substitute the above expression into  $T_\eta$  and get

$$T_\eta = - \int_0^1 \left\langle \frac{D}{Dt} \left( \frac{\partial \ell}{\partial \xi_x} \right) + \text{ad}_{(x, \xi_x)}^* \left( \frac{\partial \ell}{\partial \xi_x} \right), (x, \eta_x) \right\rangle dt.$$

If  $T_\eta = 0$  for an arbitrary  $(x, \eta_x)$  then we find that the vertical equation

$$\frac{D}{Dt} \left( \frac{\partial \ell}{\partial \xi_x} \right) = -\text{ad}_{(x, \xi_x)}^* \left( \frac{\partial \ell}{\partial \xi_x} \right)$$

must hold.

We now consider the equation  $T_x = 0$ . We find that

$$T_x = \int_0^1 \left( \left\langle \frac{\partial \ell}{\partial \dot{x}}, \frac{D\delta x}{Dt} \right\rangle + \left\langle \frac{\partial \ell}{\partial x}, \delta x \right\rangle + \left\langle \frac{\partial \ell}{\partial \xi_x}, \tilde{B}(\dot{x}, \delta x) \right\rangle \right) dt.$$

Using the definition of the Levi-Civita derivative on  $T^*X$  we find

$$\left\langle \frac{\partial \ell}{\partial \dot{x}}, \frac{D\delta x}{Dt} \right\rangle = \frac{d}{dt} \left\langle \frac{\partial \ell}{\partial \dot{x}}, \delta x \right\rangle - \left\langle \frac{D}{Dt} \left( \frac{\partial \ell}{\partial \dot{x}} \right), \delta x \right\rangle.$$

We substitute this into our expression for  $T_x$  to find

$$T_x = \left[ \left\langle \frac{\partial \ell}{\partial \dot{x}}, \delta x \right\rangle \right]_{t=0}^{t=1} - \int_0^1 \left( \left\langle \frac{D}{Dt} \left( \frac{\partial \ell}{\partial \dot{x}} \right) - \frac{\partial \ell}{\partial x}, \delta x \right\rangle - \left\langle \frac{\partial \ell}{\partial \xi_x}, \tilde{B}(\dot{x}, \delta x) \right\rangle \right) dt.$$

As  $\delta x$  vanishes at the end-points, we may ignore the boundary terms. Moreover, the final term may be re-written as

$$\left\langle \frac{\partial \ell}{\partial \xi_x}, \tilde{B}(\dot{x}, \delta x) \right\rangle = \left\langle i_{\dot{x}} \tilde{B}_{\partial \ell / \partial \xi_x}, \delta x \right\rangle.$$

Thus we find

$$T_x = - \int_0^1 \left\langle \frac{D}{Dt} \left( \frac{\partial \ell}{\partial \dot{x}} \right) - \frac{\partial \ell}{\partial x} - i_{\dot{x}} \tilde{B}_{\partial \ell / \partial \xi_x}, \delta x \right\rangle dt.$$

If  $T_x = 0$  for arbitrary fixed end-point variations,  $\delta x$ , then the horizontal equation

$$\frac{D}{Dt} \left( \frac{\partial \ell}{\partial \dot{x}} \right) - \frac{\partial \ell}{\partial x} = i_{\dot{x}} \tilde{B}_{\partial \ell / \partial \xi_x}$$

must hold. Thus we have shown that (iii) implies (iv). Additionally, the above sequence of calculations is reversible and (iv) can be shown to imply (iii).  $\square$

At this point, we may be inspired to come up with particle methods by trying to better understand the horizontal equation (the equation for the dynamics on  $TX$ ). However, for the case of an incompressible homogenous ideal fluid one has the right to be very skeptical of this idea because the vertical equation expresses the overwhelming majority of the dynamics. In fact, if we unpack the terms of the vertical equation for the Lagrangian  $L_{\text{Euler}}$ , we find that  $\frac{\partial \ell_{\text{Euler}}}{\partial \xi_x} = \langle \xi_x + \mathcal{I}(\dot{x}), \cdot \rangle_{L^2} = u^b$ , so that the left hand side is

$$\frac{Du^b}{Dt} = \frac{\partial u^b}{\partial t} + \text{ad}_{\mathcal{I}(\dot{x})}^*(u^b),$$

while the right hand side of the vertical equation is  $-\text{ad}_{(x, \xi_x)}^*(u^b)$ . Bringing both terms to one side we find  $\frac{\partial u^b}{\partial t} + \text{ad}_u^* u^b = 0$ , which is the Euler equation for an ideal homogeneous fluid equation (see, e.g., [AM78] [AK92]), except for the fact that the vertical equations (strictly speaking) only address the domain complementary to the particle locations. In essence, the horizontal equations for  $L_{\text{Euler}}$  only state that the particles move in such a way that  $u$  can be extended smoothly by “filling the holes”. Despite this sobering observation, we know that computational scientists simulate fluids and successfully use interpolation methods frequently. After studying what happens when we reduce by a class of subgroups of  $G_{\odot}$  in §4, we will try to understand how the horizontal equation can potentially inspire particle methods in §5.

#### 4. HIGHER ORDER ISOTROPY GROUPS

In the previous section we reduced our system by the Lie group  $G_{\odot}$ . This resulting in a set of coupled equations on the vector bundles  $TX$  and  $\tilde{\mathfrak{g}}_{\odot}$ . Notably,  $X$  is the configuration manifold for the dynamics of particles in  $M$ . That data associated to an  $x \in X$  consists of the values of  $N$  points of some diffeomorphism  $\varphi \in \text{SDiff}(M)$  which represents the configuration of the fluid. We would like to take this further and construct particles which carry the values of diffeomorphisms as well as a finite amount of derivative data. In other words we would like to have jet-data attached out particles. This will be useful in the final section where we construct some plausible particle methods.

To obtain these data augmented particles we will consider the Lie group

$$G_{\odot}^{(k)} := \{\psi \in G_{\odot} \mid T_{\odot}^{(k)}\psi \text{ is the identity on } T_{\odot}^{(k)}M\}.$$

In local coordinates, elements of  $G_{\odot}^{(k)}$  are diffeomorphisms such that the Taylor expansion around each point  $\odot_i$  of  $\odot$  is of the form

$$\psi(\odot_i + \delta x_i) = \odot_i + \delta x_i + o(\|\delta x_i\|^k)$$

To make this more precise we will include a short discussion on jet bundles—in particular, jets of elements in  $\text{SDiff}(M)$ .

**4.1. Jet bundles of the special diffeomorphism group.** Consider the following equivalence relation:  $\varphi_1, \varphi_2 \in \text{SDiff}(M)$  are *equivalent to  $k^{\text{th}}$  order at  $x = (x_1, \dots, x_N) \in X$*  if, in a chart (and hence all charts), they have the same Taylor expansion at each  $x_i, i = 1, \dots, N$ . Given a  $\varphi \in \text{SDiff}(M)$  denote the equivalence class by  $j_x^k(\varphi)$  and denote the set of such equivalence classes by  $\mathcal{J}_x^k(\text{SDiff}(M))$ ; elements of  $\mathcal{J}_x^k(\text{SDiff}(M))$  are called  $k$ -jets of  $\text{SDiff}(M)$  sourced at  $x \in X$ . For  $k = 0$ , the equivalence relation above states that  $\varphi_1(x) = \varphi_2(x)$  and for  $k = 1$  it means that  $T_x\varphi_1 = T_x\varphi_2$ . For any  $l < k$ , there is a natural projection  $\pi_l^k : \mathcal{J}_x^k(\text{SDiff}(M)) \rightarrow \mathcal{J}_x^l(\text{SDiff}(M))$ . In particular,  $\pi_0^k(j_x^k\varphi) = \varphi(x) \in X$ . If  $j_x^k(\varphi_1) = j_x^k(\varphi_2)$  and  $j_y^k(\psi_1) = j_y^k(\psi_2)$  for  $\varphi_1, \varphi_2, \psi_1, \psi_2 \in \text{SDiff}(M)$ ,  $y = \varphi_1(x) = \varphi_2(x)$ , then  $j_x^k(\psi_1 \circ \varphi_1) = j_x^k(\psi_2 \circ \varphi_2)$ . This leads to the definition of jet composition  $j_y^k(\psi) \circ j_x^k(\varphi) := j_x^k(\psi \circ \varphi)$ . For more information on jet spaces see, e.g., [KMS99, §12].

There is an alternative way to define  $k$ -jets using the  $k$ th order tangent bundle, which we now define. Note that a curve in  $M$  is merely an element of  $C^\infty(I; M)$  for some interval  $I \subset \mathbb{R}$  which contains  $0 \in \mathbb{R}$ . Define the equivalence relation between curves on  $M$  by  $c_1(\cdot) \sim_0 c_2(\cdot)$  if and only if  $c_1(0) = c_2(0)$ . Thus, the quotient  $\frac{C^\infty(I; M)}{\sim_0}$  is identified with  $M$  itself. Next, consider the equivalence relation  $c_1(\cdot) \sim_1 c_2(\cdot)$  given by the conditions  $c_1(0) = c_2(0)$  and  $\frac{dc_1}{dt} \Big|_{t=0} = \frac{dc_2}{dt} \Big|_{t=0}$ . We observe that  $TM = \frac{C^\infty(I; M)}{\sim_1}$  (see, e.g., [AM78, Definition 1.6.3], [Ble81, Definition 0.2.3], [MR99, Definition 3.3.1]). Finally, define the equivalence relation  $c_1(\cdot) \sim_k c_2(\cdot)$  given by the conditions

$$c_1(0) = c_2(0), \quad \frac{dc_1}{dt} \Big|_{t=0} = \frac{dc_2}{dt} \Big|_{t=0}, \quad \dots, \quad \frac{d^k c_1}{dt^k} \Big|_{t=0} = \frac{d^k c_2}{dt^k} \Big|_{t=0}$$

in a chart (and hence all compatible charts at  $c_1(0)$ ). The  $k$ th order tangent bundle is defined as the quotient space  $T^{(k)}M := \frac{C^\infty(I; M)}{\sim_k}$  equipped with the fiber bundle projection  $\tau^{(k)} : T^{(k)}M \rightarrow M$ . Given a curve  $c \in C^\infty(I; M)$  denote its equivalence class with respect to  $\sim_k$  by  $[c]_k$ ; thus the fiber projection is given by  $\tau^{(k)}([c]_k) = c(0)$ . Note that, with the exception of  $k = 0, 1$ ,  $\tau^{(k)} : T^{(k)}M \rightarrow M$  are not vector bundles.

Note that any  $\varphi \in \text{SDiff}(M)$  acts on a curve  $c \in C^\infty(I; M)$  by composition. Define the diffeomorphism  $T^{(k)}\varphi : T^{(k)}M \rightarrow T^{(k)}M$  by  $T^{(k)}\varphi([c]_k) := [\varphi \circ c]_k$ . Given  $\varphi \in \text{SDiff}(M)$  and a point  $m \in M$  we see that  $T_m^{(k)}\varphi : (\tau^{(k)})^{-1}(m) \rightarrow (\tau^{(k)})^{-1}(\varphi(m))$ . Note that  $T^{(k)}(\varphi_2 \circ \varphi_1) = T^{(k)}\varphi_2 \circ T^{(k)}\varphi_1$ . If we pay attention to the base points, this last equation reads  $T_m^{(k)}(\varphi_2 \circ \varphi_1) = T_{\varphi_1(m)}^{(k)}\varphi_2 \circ T_m^{(k)}\varphi_1$ . Following our conventions in the previous section, we define  $T_{\odot}^{(k)}\varphi := \left( T_{\odot_1}^{(k)}\varphi, \dots, T_{\odot_N}^{(k)}\varphi \right)$ .

Define the subgroup

$$G_{\odot}^{(k)} := \left\{ \varphi \in \text{SDiff}(M) \mid T_{\odot}^{(k)} \varphi = T_{\odot}^{(k)} id \right\} \\ = \left\{ \psi \in G_{\odot} \mid \frac{\partial \psi^i}{\partial m^j}(\odot_l) = \delta_i^j, \quad \frac{\partial^{|\alpha|} \psi^i}{\partial m^{\alpha}}(\odot_l) = 0, \quad 1 < |\alpha| \leq k, \quad l = 1, \dots, N \right\},$$

where  $T_{\odot_j}^{(k)} id$  is the identity map on the fiber  $T_{\odot_j}^{(k)} M$ ,  $\alpha := (\alpha_1, \dots, \alpha_{\dim(M)})$  is a multi-index,  $\alpha_j \geq 0$ ,  $\alpha \in \mathbb{N}^{\dim(M)}$ ,  $|\alpha| := \alpha_1 + \dots + \alpha_{\dim(M)}$ , and  $\frac{\partial^{|\alpha|}}{\partial m^{\alpha}} := \partial^{|\alpha|} / (\partial m^1)^{\alpha_1} (\partial m^2)^{\alpha_2} \dots (\partial m^{\dim(M)})^{\alpha_{\dim(M)}}$ . The second equality is a direct verification in a local chart. The subgroup  $G_{\odot}^{(k)}$  is itself a Lie group, and we denote its Lie algebra by

$$\mathfrak{g}_{\odot}^{(k)} := \{ \xi \in \mathfrak{g}_{\odot} \mid \partial_{\alpha}|_{\odot} \xi = 0, \quad 0 \leq |\alpha| \leq k \},$$

i.e.,  $\mathfrak{g}_{\odot}^{(k)}$  consist of divergence free vector fields which vanish at the points  $\odot$  to  $k$ th order.

In the following sections we will consider reducing Lagrangian systems on  $\text{SDiff}(M)$  by  $G_{\odot}^{(k)}$  for  $k > 0$ . In order to relate these ideas to the reductions performed earlier in the paper (i.e. by  $G_{\odot}$ ), we note the following property.

**Proposition 4.1.** *The subgroup  $G_{\odot}^{(k)}$  is normal in  $G_{\odot}$ .*

*Proof.* Let  $\varphi \in G_{\odot}$  and  $\psi \in G_{\odot}^{(k)}$ . Thus  $T_{\odot}^{(k)} \psi = T_{\odot}^{(k)} id$  and we find

$$T_{\odot}^{(k)}(\varphi \circ \psi \circ \varphi^{-1}) = T_{\odot}^{(k)} \varphi \circ T_{\odot}^{(k)} \psi \circ (T_{\odot}^{(k)} \varphi)^{-1} = T_{\odot}^{(k)} id.$$

This shows  $\varphi \circ \psi \circ \varphi^{-1} \in G_{\odot}^{(k)}$ . □

The subgroup  $G_{\odot}^{(k)}$  acts on  $\text{SDiff}(M)$  by composition on the right. Note that by the relevant definitions,  $j_{\odot}^k \varphi = j_{\odot}^k(id)$  if and only if  $T_{\odot}^{(k)} \varphi = T_{\odot}^{(k)} id$ . This immediately shows that both maps

$$\mathcal{J}_{\odot}^k(\text{SDiff}(M)) \ni j_{\odot}^k \varphi \longleftrightarrow [\varphi] \in \text{SDiff}(M)/G_{\odot}^{(k)}$$

are well defined and inverses to each other. Thus, we can identify  $\mathcal{J}_{\odot}^k(\text{SDiff}(M))$  with  $\text{SDiff}(M)/G_{\odot}^{(k)}$  which we shall do in the rest of the paper. Using this identification, Proposition 4.1 implies that

$$\mathcal{J}_{\odot}^k(G_{\odot}) = G_{\odot}/G_{\odot}^{(k)}$$

is a finite dimensional Lie group with Lie algebra  $\mathfrak{g}_{\odot}/\mathfrak{g}_{\odot}^{(k)}$ . In particular,  $\mathcal{J}_{\odot}^k(G_{\odot})$  consists of  $k$ th order Taylor series data about the points of  $\odot$ . We will use the right action of  $\mathcal{J}_{\odot}^k(G_{\odot})$  on  $\mathcal{J}^k(\text{SDiff}(M))$  in §5 to find conserved momenta for a class of particle methods, using Noether's theorem.



Finally, we would like to relate the tangent bundle of  $\text{SDiff}(M)$  to the tangent bundle of  $\mathcal{J}_{\odot}^k(\text{SDiff}(M))$ . Given any  $\dot{\varphi} \in T\text{SDiff}(M)$  we may consider the  $k$ -jet  $j_{\odot}^k(\dot{\varphi}) \in T\mathcal{J}_{\odot}^k(\text{SDiff}(M))$  as the vector

$$j_{\odot}^k(\dot{\varphi}) = \left. \frac{d}{dt} \right|_{t=0} j_{\odot}^k(\varphi_t)$$

for an arbitrary curve  $\varphi_t \in \text{SDiff}(M)$  such that  $\left. \frac{d\varphi_t}{dt} \right|_{t=0} = \dot{\varphi}$ . Of course, this definition gives a meaning to the expression  $j_{\odot}^k(u)$  when  $u \in \mathfrak{X}_{\text{div}}(M) \subset T\text{SDiff}(M)$  as well. In particular, we conclude that  $\mathfrak{g}_{\odot}^{(k)} = \{u \in \mathfrak{X}_{\text{div}}(M) \mid j_{\odot}^k(u) = 0\}$ .

Given any  $\varphi \in \text{SDiff}(M)$  such that  $\varphi(\odot) = x^{(0)} \in X$  we see that  $j_{\odot}^k(u \circ \varphi)$  is an element of  $T\mathcal{J}_{\odot}^k(\text{SDiff}(M))$ . Moreover, we may consider the entire equivalence class,  $x^{(k)} := j_{\odot}^k \varphi$ , as a set of maps which can be composed with the set of maps comprising  $j_{x^{(0)}}^k(u)$  to define  $j_{x^{(0)}}^k(u) \circ x^{(k)} := j_{\odot}^k(u \circ \varphi)$ .

Define the vector bundle  $\tilde{\mathfrak{g}}_{\odot}^{(k)}$  with base  $X^{(k)} := \text{SDiff}(M)/G_{\odot}^{(k)} = \mathcal{J}_{\odot}^{(k)}(\text{SDiff}(M))$  by

$$\tilde{\mathfrak{g}}_{\odot}^{(k)} := \left\{ \left( x^{(k)}, \xi_{x^{(k)}}^{(k)} \right) \mid x^{(k)} \in X^{(k)}, x^{(0)} := \pi_0^k(x^{(k)}) \in X, \xi_{x^{(k)}}^{(k)} \in \mathfrak{g}_{x^{(0)}}^{(k)} \right\},$$

where  $\mathfrak{g}_{x^{(0)}}^{(k)}$  is the Lie algebra of the isotropy group  $G_{x^{(0)}}^{(k)}$  for each  $x^{(0)} \in X$ , i.e., the set of divergence free vector fields which vanish up to order  $k$  at the  $N$  particle locations  $x^{(0)} \in X \subset M^N$ <sup>3</sup>.

**4.2. Quotients and  $k^{\text{th}}$  order interpolation methods.** In this section we generalize the notion of an interpolation method to handle jet-data. This generalization is called a higher order interpolation method, and is identical to the notion of ‘higher-order interpolation’ from the standpoint of numerical analysis. Define the quotient manifold  $X^{(k)} := \text{SDiff}(M)/G_{\odot}^{(k)} \equiv \mathcal{J}_{\odot}^{(k)}(\text{SDiff}(M))$ , which consists of particles augmented by Taylor series data. For the case  $k = 1$ , an element of  $X^{(1)}$  is given by a  $k$ -tuple of unit-volume frames above non-overlapping points in  $M$ . Therefore,  $X^{(1)}$  is equivalent to the configuration manifold of particles with orientations and shape. We can view orientation and shape as first order deformations of ‘infinitesimal balls’. If  $M = \mathbb{R}^d$  we identify the unit volume frames with  $\text{SL}(d, \mathbb{R})$  and  $X^{(1)} = X^{(0)} \times \text{SL}(d, \mathbb{R})^N \rightarrow X^{(0)}$ , a trivial fiber bundle. For  $k > 1$  we obtain quantities which express higher-order deformations.

Next, we follow the procedure of Lagrange-Poincaré reduction used in the last section but for a  $k^{\text{th}}$  order interpolation method, formally defined below.

**Definition 4.1.** *A  $k^{\text{th}}$  order interpolation method is a  $\mathfrak{X}_{\text{div}}(M)$  valued one-form,  $\mathcal{I} \in \Omega^1(X^{(k)}; \mathfrak{X}_{\text{div}}(M))$ , such that  $j_{x^{(0)}}^k(\mathcal{I}(x^{(k)}, \dot{x}^{(k)})) \circ x^{(k)} = (x^{(k)}, \dot{x}^{(k)})$  where  $(x^{(k)}, \dot{x}^{(k)}) \in TX^{(k)}$ , and  $x^{(0)} = \pi_0^k(x^{(k)})$ .*

---

<sup>3</sup>The bundle  $\tilde{\mathfrak{g}}_{\odot}^{(k)}$  is identical to the adjoint bundle  $\frac{\text{SDiff}(M) \times \mathfrak{g}_{\odot}^{(k)}}{G_{\odot}^{(k)}}$  when equipped with the fiberwise Lie bracket given by the negative of the Jacobi-Lie bracket of vector fields.

Note that  $k = 0$  recovers Definition 2.4. For  $k > 0$  we get the natural higher order generalization of 2.4. In other words, a  $k^{\text{th}}$  order interpolation method produces a vector field with given  $k^{\text{th}}$  order Taylor-series data at a finite set of points. Again, as in Remark 2.3, a  $k^{\text{th}}$  order interpolation method is equivalent to a right  $G_{\odot}^{(k)}$ -principal connection on  $\text{SDiff}(M)$ .

By using a  $k^{\text{th}}$  order interpolation method, we can follow the same constructions and procedures as in §2 and §3, beginning with the definition of the fiber bundle isomorphism  $\Psi_{\mathcal{I}}^{(k)} : T\text{SDiff}(M)/G_{\odot}^{(k)} \rightarrow TX^{(k)} \oplus \tilde{\mathfrak{g}}_{\odot}^{(k)}$  (the analogue of the one in Proposition 2.3) given by

$$(23) \quad \Psi_{\mathcal{I}}^{(k)}([v_{\varphi}]) = j_{\odot}^k(v_{\varphi}) \oplus (v_{\varphi} \circ \varphi^{-1} - \mathcal{I}(j_{\odot}^k(v_{\varphi}))).$$

Working in this manner we may repeat all the proofs of the previous section by using the jet operator  $j_{\odot}^k$  in the right places. For example, the evaluation  $x = \varphi(\odot)$  is now replaced by the evaluation  $x^{(k)} = j_{\odot}^k \varphi$ . Thus, all symbolic manipulations are entirely the same as in the previous sections and the reduced Lagrangian of  $L_{\text{Euler}}$  is now given by

$$\ell_{\text{Euler}}^{(k)} \left( x^{(k)}, \dot{x}^{(k)}, \xi_{x^{(k)}}^{(k)} \right) = \frac{1}{2} \int_M \left\| \mathcal{I}(\dot{x}^{(k)}) + \xi_{x^{(k)}}^{(k)} \right\|^2 d\text{vol}(m).$$

Using this insight we may obtain a modest generalization of Theorem 3.1.

**Theorem 4.1.** *Let  $L : T\text{SDiff}(M) \rightarrow \mathbb{R}$  be a  $G_{\odot}^{(k)}$ -invariant Lagrangian (e.g.,  $L_{\text{Euler}}$  given in (13)). Let  $\mathcal{I} \in \Omega^1(X^{(k)}; \mathfrak{X}_{\text{div}}(M))$  be a  $k^{\text{th}}$ -order interpolation method and  $\ell^{(k)} : TX^{(k)} \oplus \tilde{\mathfrak{g}}_{\odot}^{(k)} \rightarrow \mathbb{R}$  the reduced Lagrangian defined by  $\ell^{(k)} \circ \psi_{\mathcal{I}} := L$ . Let  $\varphi_t \in \text{SDiff}(M)$  be a curve and set  $\left( x^{(k)}, \dot{x}^{(k)}, \xi_{x^{(k)}}^{(k)} \right) (t) = \Phi_{\mathcal{I}}^{(k)}([\varphi_t, \dot{\varphi}_t])$ . Then the following are equivalent.*

- (i) *The curve  $\varphi_t$  is critical for the action*

$$S = \int_0^1 L(\varphi_t, \dot{\varphi}_t) dt$$

*with respect to variations  $\delta\varphi_t$  with fixed end points.*

- (ii) *The curve  $\varphi_t$  satisfies the Euler-Lagrange equations*

$$\frac{D}{Dt} \left( \frac{\partial L}{\partial \dot{\varphi}_t} \right) - \frac{\partial L}{\partial \varphi_t} = 0.$$

*with respect to an arbitrary covariant derivative on  $T\text{SDiff}(M)$ .*

- (iii) *The curve  $\left( x^{(k)}, \dot{x}^{(k)}, \xi_{x^{(k)}}^{(k)} \right) (t)$  is critical for the reduced action*

$$[S] = \int_0^1 \ell^{(k)} \left( x^{(k)}, \dot{x}^{(k)}, \xi_{x^{(k)}}^{(k)} \right) (t) dt$$

with respect to arbitrary variations  $\delta x^{(k)}(t)$ , with fixed end points, and co-variant variations of  $(x^{(k)}, \xi_{x^{(k)}}^{(k)})(t)$  of the form

$$\delta \mathcal{I} \left( x^{(k)}, \xi_{x^{(k)}}^{(k)} \right) = \frac{D \left( x^{(k)}, \eta_{x^{(k)}}^{(k)} \right)}{Dt} + \left[ \left( x^{(k)}, \eta_{x^{(k)}}^{(k)} \right), \left( x^{(k)}, \xi_{x^{(k)}}^{(k)} \right) \right] + \tilde{B} \left( \dot{x}^{(k)}, \delta x^{(k)} \right)$$

for arbitrary curves  $(x^{(k)}, \eta_{x^{(k)}}^{(k)})(t) \in \tilde{\mathfrak{g}}_{\odot}^{(k)}$  covering  $x(t)$ .

(iv) The curve  $(x^{(k)}, \dot{x}^{(k)}, \xi_{x^{(k)}}^{(k)})(t)$  satisfies the Lagrange-Poincaré equations

$$(24) \quad \frac{D}{Dt} \left( \frac{\partial \ell^{(k)}}{\partial \dot{x}^{(k)}} \right) - \frac{\partial \ell^{(k)}}{\partial x^{(k)}} = \tilde{B}_{\partial \ell^{(k)} / \partial \xi_{x^{(k)}}^{(k)}} \left( \dot{x}^{(k)}, \cdot \right) \quad \text{on } T_{x^{(k)}(t)} X^{(k)}$$

$$(25) \quad \frac{D}{Dt} \left( \frac{\partial \ell^{(k)}}{\partial \xi_{x^{(k)}}^{(k)}} \right) = -\text{ad}_{\xi_{x^{(k)}}^{(k)}}^* \left( \frac{\partial \ell^{(k)}}{\partial \xi_{x^{(k)}}^{(k)}} \right) \quad \text{on } \tilde{\mathfrak{g}}_{\odot}^{(k)}(x^{(k)}(t))$$

where  $\tilde{B}_{\partial \ell^{(k)} / \partial \xi_{x^{(k)}}^{(k)}}(v_{x^{(k)}}, w_{x^{(k)}}) = \left\langle \frac{\partial \ell^{(k)}}{\partial \xi_{x^{(k)}}^{(k)}}, \tilde{B}(v_{x^{(k)}}, w_{x^{(k)}}) \right\rangle$ , for any  $v_{x^{(k)}}, w_{x^{(k)}} \in T_{x^{(k)}} X^{(k)}$  and all  $x^{(k)} \in X^{(k)}$ .

*Proof.* The proof of theorem 4.1 is nearly identical to the proof of Theorem 3.1. The symbolic manipulations are the same upon substituting the expression ‘ $x = \varphi(\odot)$ ’ with the expression ‘ $x = j_{\odot}^k(\varphi)$ ’ into the proof of Theorem 3.1.  $\square$

When  $k > 0$ , the space  $X^{(k)}$  stores particle positions, as well as  $k^{\text{th}}$  order jet-data about the particle positions. Moreover, the infinite dimensional vector bundle  $\tilde{\mathfrak{g}}_{\odot}^{(k)}$  stores vector fields which vanish at the particle positions up to  $k^{\text{th}}$  order. Specifically, the *horizontal equation* (24) evolves the momenta of the particles and their jet-data, while the *vertical equation* (25) evolves the momenta conjugate to  $(x, \xi_{x^{(k)}}^{(k)})$ .

**Remark 4.2.** If we interpret  $\mathcal{I}(\cdot)$  as an estimate of the fluid motion then the vector field  $\xi_{x^{(k)}}^{(k)}$  can be viewed as a residual. This interpretation of  $\xi_{x^{(k)}}^{(k)}$  as a residual of an estimate will become more important when we discuss how  $\mathcal{I}$  induces particle methods for Lagrangian systems on  $\text{SDiff}(M)$ . In particular, the error analysis of these methods can be performed through this interpretation.

**Remark 4.3.** If  $L$  is a  $G_{\odot}$ -invariant Lagrangian, then there is an extra symmetry in the horizontal equations (24). In particular, the group  $\mathcal{J}_{\odot}^k(G_{\odot}) \equiv G_{\odot} / G_{\odot}^{(k)}$  is a residual symmetry left over by a  $G_{\odot}^{(k)}$  reduction. For example, if  $M = \mathbb{R}^d$  and  $k = 1$  we can identify  $\mathcal{J}_{\odot}^1(G_{\odot})$  with  $\text{SL}(d, \mathbb{R})^N$  by choosing unit volume frames above  $\odot_1, \dots, \odot_N$ . Therefore, if the Lagrangian is independent of the orientation and shape of the particles, we get a right  $\text{SL}(d, \mathbb{R})^N$  symmetry which has yet to be “quotiented away”. This extra symmetry is attached to the particles, and results

in conserved momenta as a consequence of Noether's theorem. We will discuss this more in §5.1 in the context of a particle method.

## 5. PARTICLE METHODS

We hope that a computational scientist or engineer interested in particle methods for fluids finds the Lagrange-Poincaré equations of Theorems 3.1 and 4.1 thought provoking; we have deliberately presented our approach using the “interpolation” point of view to encourage such a reaction from practitioners. In this section we describe methods by which one can construct particle methods. This is not to say that these are the only methods one can do: study along these lines is wide open for further exploration and implementation.

In the previous section we considered the Lie subgroup  $G_{\odot}^{(k)} \subset \text{SDiff}(M)$ . The quotient  $X^{(k)} := \mathcal{J}_{\odot}^k(\text{SDiff}(M)) = \text{SDiff}(M)/G_{\odot}^{(k)}$  is a configuration manifold of particles which carry Taylor-series data. The Lie algebra of  $G_{\odot}^{(k)}$ , which we denote  $\mathfrak{g}_{\odot}^{(k)}$ , consists of vector fields which vanish to  $k^{\text{th}}$  order at each of the points in  $\odot$ . We then can define the associated bundle  $\tilde{\pi}^{(k)} : \tilde{\mathfrak{g}}_{\odot}^{(k)} \rightarrow X^{(k)}$  by defining the fiber over  $x^{(k)} \in X^{(k)}$  by

$$\tilde{\mathfrak{g}}_{\odot}^{(k)}(x^{(k)}) = \{u \in \mathfrak{X}_{\text{div}}(M) \mid j_{x^{(0)}}^k(u) = 0\}, \quad x^{(0)} = \pi_0^{(k)}(x^{(k)}).$$

In Theorem 4.1, we found equations of motion on the space  $TX^{(k)} \oplus \tilde{\mathfrak{g}}_{\odot}$  (the Lagrange-Poincaré equations). These equations of motion are given by a horizontal equation, (24), which describes the dynamics on  $TX^{(k)}$ , and a vertical equation, (25), which describes the dynamics of the  $\tilde{\mathfrak{g}}_{\odot}^{(k)}$ -component. In particular, (24) is similar to an Euler-Lagrange equation except for the coupling term involving the curvature on the right hand side and the  $(x^{(k)}, \xi_{x^{(k)}}^{(k)})$ -dependence of particle momenta,  $\partial \ell^{(k)} / \partial x^{(k)}$ . Therefore, it is tempting to find a way of ignoring the  $\xi_{x^{(k)}}^{(k)}$  and curvature terms in the hope of deriving a true Euler-Lagrange equation on the finite dimensional configuration manifold  $X^{(k)}$ . One way to ignore the  $\xi_{x^{(k)}}^{(k)}$ -dependence is to non-holonomically constrain it to be 0. That means constraining the spatial velocity  $u = \dot{\varphi} \circ \varphi^{-1}$  to the range of  $\mathcal{I}$ . Thus we introduce the constraint distribution  $\Delta_{\mathcal{I}} \subset T\text{SDiff}(M)$  whose fiber over  $\varphi \in \text{SDiff}(M)$  is

$$(26) \quad \Delta_{\mathcal{I}}(\varphi) := \{\mathcal{I}(\dot{x}^{(k)}) \circ \varphi \mid \dot{x}^{(k)} \in T_{x^{(k)}}X^{(k)}, x^{(k)} = j_{\odot}^k \varphi\}.$$

By construction, the non-holonomic force which keeps  $\dot{\varphi}$  in  $\Delta_{\mathcal{I}}$  is such that the vertical component  $\xi_{x^{(k)}}^{(k)} = \dot{\varphi} \circ \varphi^{-1} - \mathcal{I}(\dot{x}^{(k)})$  vanishes, where  $\dot{x}^{(k)} = j_{\odot}^{(k)}(\dot{\varphi})$ . Thus, the dynamics on  $X^{(k)}$  determines the dynamics completely. This becomes evident in the following theorem. In particular, items (ii) and (iv) of Theorem 5.1 can be seen as spatially  $k^{\text{th}}$  order accurate particle methods.

**Theorem 5.1.** *Let  $L : T\text{SDiff}(M) \rightarrow \mathbb{R}$  be a  $G_{\odot}^{(k)}$ -invariant Lagrangian and  $\mathcal{I} \in \Omega^1(X^{(k)}; \mathfrak{X}_{\text{div}}(M))$  a  $k^{\text{th}}$ -order interpolation method. Let  $\Delta_{\mathcal{I}} \subset T\text{SDiff}(M)$  be*

the constraint distribution given in (26) and  $F : TX^{(k)} \rightarrow T^*X^{(k)}$  the force defined by

$$(27) \quad \langle F(x^{(k)}, \dot{x}^{(k)}), \delta x^{(k)} \rangle = - \left. \frac{d}{d\epsilon} \right|_{\epsilon=0} \ell^{(k)} \left( x^{(k)}, \dot{x}^{(k)}, \epsilon \tilde{B}(\dot{x}^{(k)}, \delta x^{(k)}) \right).$$

Finally, let  $\varphi_t \in \text{SDiff}(M)$  be a curve, set  $\left( x^{(k)}, \dot{x}^{(k)}, \xi_{x^{(k)}}^{(k)} \right) (t) = \Phi_{\mathcal{I}}([\varphi_t, \dot{\varphi}_t]) \in TX^{(k)} \oplus \tilde{\mathfrak{g}}_{\odot}^{(k)}$ , and define the Lagrangian  $L_{X^{(k)}} : TX^{(k)} \rightarrow \mathbb{R}$  by  $L_{X^{(k)}}(x^{(k)}, \dot{x}^{(k)}) = \ell^{(k)}(x^{(k)}, \dot{x}^{(k)}, 0)$ . Then the following are equivalent:

(i)  $\varphi_t$  satisfies the constrained Euler-Lagrange equation

$$\frac{D}{Dt} \left( \frac{\partial L}{\partial \dot{\varphi}_t} \right) - \frac{\partial L}{\partial \varphi_t} \in \Delta_{\mathcal{I}}^{\circ} \quad , \quad \dot{\varphi}_t \in \Delta_{\mathcal{I}}$$

where  $\Delta_{\mathcal{I}}^{\circ} \subset T^*\text{SDiff}(M)$  is the annihilator of  $\Delta_{\mathcal{I}}$ .

(ii)  $\xi_{x^{(k)}}^{(k)}(t) = 0$  and  $x^{(k)}(t)$  satisfies the Lagrange-d'Alembert equations

$$(28) \quad \frac{D}{Dt} \left( \frac{\partial L_{X^{(k)}}}{\partial \dot{x}^{(k)}} \right) - \frac{\partial L_{X^{(k)}}}{\partial x^{(k)}} = F.$$

(iii)  $\dot{\varphi}_t \in \Delta_{\mathcal{I}}$  and  $\varphi_t$  satisfy the variational principle

$$\delta \int_0^1 L(\varphi, \dot{\varphi}) dt = 0$$

with respect to variations  $\delta\varphi_t \in \Delta_{\mathcal{I}}$  which vanish at the endpoints.

(iv)  $\xi_{x^{(k)}}^{(k)}(t) = 0$  and  $x^{(k)}(t)$  satisfies the Lagrange-d'Alembert principle

$$\delta \int_0^1 L_{X^{(k)}}(x^{(k)}, \dot{x}^{(k)}) dt = \int_0^1 \langle F(x^{(k)}, \dot{x}^{(k)}), \delta x^{(k)} \rangle dt$$

with respect to arbitrary variations  $\delta x^{(k)}$  with fixed endpoints.

*Proof.* The equivalence of (i) with (iii) and (ii) with (iv) is standard [Blo03, Theorem 5.2.2]. The equivalence of (iii) with (iv) is a result of the change of variables  $\left( x^{(k)}, \dot{x}^{(k)}, \xi_{x^{(k)}}^{(k)} \right) (t) = \Psi_{\mathcal{I}}^{(k)}([\varphi_t, \dot{\varphi}_t])$  (see (23)). In particular, assume (iii). Then  $(\varphi_t, \dot{\varphi}_t) \in \Delta_{\mathcal{I}}$  and by (26) we observe (suppressing the  $t$ -dependence),

$$\xi_{x^{(k)}}^{(k)} \stackrel{(23)}{=} \dot{\varphi} \circ \varphi^{-1} - \mathcal{I}(\dot{x}^{(k)}) \stackrel{(26)}{=} 0.$$

Moreover, if we consider a variation  $\delta\varphi \in \Delta_{\mathcal{I}}$ , then the corresponding variation of  $x^{(k)}$  is  $\delta x^{(k)} = \delta j_{\odot}^k(\varphi)$ . The covariant variation of  $(x^{(k)}, \xi_{x^{(k)}}^{(k)})$  is  $\delta^{\mathcal{I}}(x^{(k)}, \xi_{x^{(k)}}^{(k)}) = \tilde{B}(\dot{x}^{(k)}, \delta x^{(k)})$  (by the obvious generalization of Proposition 3.2 to  $k^{\text{th}}$  order jets). By substitution and the defining relation  $\ell^{(k)} \circ \Psi_{\mathcal{I}}^{(k)} = L$ , we find

$$0 = \delta \int_0^1 L(\varphi, \dot{\varphi}) dt = \delta \int_0^1 \ell^{(k)} \left( x^{(k)}, \dot{x}^{(k)}, \xi_{x^{(k)}}^{(k)} \right) dt.$$

However, along a curve where  $\xi_{x^{(k)}}^{(k)}(t) = 0$  the right hand side takes the form

$$\delta \int_0^1 L_{X^{(k)}}(x, \dot{x}) dt - \int_0^1 \langle F(x^{(k)}, \dot{x}^{(k)}), \delta x^{(k)} \rangle dt$$

by (27). Thus (iii) implies (iv).

To prove the converse, note that the computations above can be reversed by deriving an arbitrary variation  $\delta\varphi \in \Delta_{\mathcal{I}}$  from an arbitrary variation  $\delta x^{(k)}$  via  $\delta\varphi = \mathcal{I}(\delta x^{(k)}) \circ \varphi$ . Thus (iii) and (iv) are equivalent.  $\square$

Theorem 5.1(ii) suggests a particle method obtained by solving a set of Lagrange-d'Alembert equations on the configuration manifold  $X^{(k)}$  which can be lifted to the solution of a non-holonomically constrained Euler-Lagrange equation on  $\text{SDiff}(M)$ . The solution of constrained Euler-Lagrange equations differs from the solution of the unconstrained equations on  $\text{SDiff}(M)$  by an amount proportional to the magnitude of the constraint force required to keep  $\dot{\varphi}$  inside  $\Delta_{\mathcal{I}}$ . This is discussed further in the following remark.

**Remark 5.2.** If  $M = \mathbb{R}^d$ , the constraint force is given by the (co)vector field  $(\mathcal{I}(\dot{x}) \cdot \nabla)(\mathcal{I}(\dot{x}))$ . Taking the norm of this quantity and using Gronwall's inequality, one can find an error bound and a stopping criterion for our particle method.  $\diamond$

While Theorem 5.1(ii) can be used to construct a particle method for a fluid, the external force  $F$  is potentially disturbing. For example, guarantees such as conservation of energy, which hold for Euler-Lagrange equations, do not hold for Lagrange-d'Alembert equations. When a mechanical connection can be associated to the Lagrangian (see §2.1), the external force,  $F$ , vanishes. We will prove this in Corollary 5.1. Unfortunately, there does not exist a mechanical connection in the case of an Euler fluid. However, one could consider perturbing the Lagrangian  $L_{\text{Euler}}$  by a small parameter  $\alpha > 0$  to obtain a new Lagrangian  $L_\alpha$  which does exhibit a mechanical connection.

The existence of the mechanical connection is equivalent to the existence of an interpolation method  $\mathcal{I} \in \Omega^1(X^{(k)}; \mathfrak{X}_{\text{div}}(M))$  satisfying

$$(29) \quad \left\langle \mathcal{I}(x^{(k)}, \dot{x}^{(k)}), \eta_{x^{(0)}}^{(k)} \right\rangle_\alpha = 0, \quad \text{for all } \eta_{x^{(0)}}^{(k)} \in \mathfrak{g}_{x^{(0)}}^{(k)},$$

where  $\langle \cdot, \cdot \rangle_\alpha$  is a weak inner product which is an  $\alpha > 0$  parametrized-deformation of the usual  $L^2$  inner product on  $\mathfrak{X}_{\text{div}}(M)$ . For example this can be the  $H^1$ - $\alpha$ -metric used in  $\alpha$ -models and the Camassa-Holm equation ([HMR98, FHT01]). We call such an interpolation method  $\mathcal{I}$  a *mechanical interpolation method*. In such a case, if  $L$  is a classical Lagrangian, the difference between the kinetic energy and a potential, the reduced Lagrangian takes the form

$$\ell_\alpha^{(k)}(x^{(k)}, \dot{x}^{(k)}, \xi_{x^{(k)}}^{(k)}) = \frac{1}{2} \|\mathcal{I}(\dot{x}^{(k)})\|_\alpha^2 + \frac{1}{2} \|\xi_{x^{(k)}}^{(k)}\|_\alpha^2 - U(x^{(k)}).$$

Moreover, we find that  $\Delta_{\mathcal{I}}$  is invariant under the Euler-Lagrange flow as a result of Noether's theorem.

**Lemma 5.1.** *Assume the setup of Theorem 5.1 and that  $L$  is the difference between a kinetic minus a potential energy with respect to a right-invariant weak Riemannian metric  $\langle \cdot, \cdot \rangle_{\alpha} : T \text{SDiff}(M) \oplus T \text{SDiff}(M) \rightarrow \mathbb{R}$ . Moreover, assume there exists a  $k^{\text{th}}$  order interpolation method which is mechanical with respect to the metric, i.e., (29) holds. Then the Lagrangian momentum map  $J_L : T \text{SDiff}(M) \rightarrow \left(\mathfrak{g}_{\odot}^{(k)}\right)^*$  is given by*

$$\langle J_L(\varphi, \dot{\varphi}), \eta \rangle = \langle \dot{\varphi} \circ \varphi^{-1} - \mathcal{I}(j_{\odot}^k(\dot{\varphi})), \varphi_* \eta \rangle_{\alpha}, \quad \text{for all } \eta \in \mathfrak{g}_{\odot}^{(k)}$$

and  $\Delta_{\mathcal{I}} = J_L^{-1}(0)$ . By Noether's theorem,  $\Delta_{\mathcal{I}}$  is an invariant submanifold with respect to the flow of the Euler-Lagrange equations on  $\text{SDiff}(M)$ .

*Proof.* The right infinitesimal generator of  $\eta \in \mathfrak{g}_{\odot}^{(k)}$  on  $\text{SDiff}(M)$  is given by  $\varphi \in \text{SDiff}(M) \mapsto T\varphi \circ \eta$ . Using the definition of the Lagrangian momentum map (see, e.g., [AM78, Corollary 4.2.14]) and the right invariance of  $\langle \cdot, \cdot \rangle_{\alpha}$  we find

$$\langle J_L(\varphi, \dot{\varphi}), \eta \rangle = \langle \dot{\varphi}, T\varphi \circ \eta \rangle_{\alpha} = \langle \dot{\varphi} \circ \varphi^{-1}, \varphi_* \eta \rangle_{\alpha}.$$

By assumption,  $\mathcal{I}$  maps the tangent fiber,  $T_{x^{(k)}}X^{(k)}$ , to the annihilator of  $\mathfrak{g}_{x^{(0)}}^{(k)}$ , where  $x^{(k)} = j_{\odot}^k(\varphi)$  and  $x^{(0)} = \pi_0^{(k)}(x^{(k)})$ . Since  $\varphi_* \eta \in \mathfrak{g}_{x^{(0)}}^{(k)}$ , the formula above implies

$$\langle J_L(\varphi, \dot{\varphi}), \eta \rangle = \langle \dot{\varphi} \circ \varphi^{-1} - \mathcal{I}(j_{\odot}^k(\dot{\varphi})), \varphi_* \eta \rangle_{\alpha}.$$

Thus, by inspection,  $\Delta_{\mathcal{I}} = J_L^{-1}(0)$ . By Noether's theorem,  $J_L$  is conserved under the flow of the Euler-Lagrange equations. Thus if  $\varphi_t$  satisfies the Euler-Lagrange equations and  $\dot{\varphi}_0 \in \Delta_{\mathcal{I}}$ , then  $\dot{\varphi}_t \in \Delta_{\mathcal{I}}$  for all time.  $\square$

In other words, given a mechanical interpolation method, the constraint force to keep trajectories in  $\Delta_{\mathcal{I}}$  vanishes. In particular, Lemma 5.1 provides a new version of Theorem 5.1.

**Corollary 5.1.** *Assume the setup of Theorem 5.1 and Lemma 5.1. The reduced Lagrangian takes the form*

$$(30) \quad \ell^{(k)}\left(x^{(k)}, \dot{x}^{(k)}, \xi_{x^{(k)}}^{(k)}\right) = \frac{1}{2} \|\mathcal{I}(\dot{x}^{(k)})\|_{X^{(k)}}^2 + \frac{1}{2} \|\xi_{x^{(k)}}^{(k)}\|_{\mathfrak{g}_{\odot}^{(k)}}^2 - U(x^{(k)}).$$

Finally, let  $L_{X^{(k)}} = \ell^{(k)}|_{TX^{(k)}}$ . Then the external force  $F$  of (27) is zero and the following are equivalent:

- (i)  $\dot{\varphi}_0 \in \Delta_{\mathcal{I}}$  and  $\varphi_t$  satisfies the Euler-Lagrange equation

$$\frac{D}{Dt} \left( \frac{\partial L}{\partial \dot{\varphi}_t} \right) - \frac{\partial L}{\partial \varphi_t} = 0;$$

(ii)  $\xi_{x^{(k)}}^{(k)}(t) = 0$  and  $x^{(k)}(t)$  satisfies the Euler-Lagrange equations

$$\frac{D}{Dt} \left( \frac{\partial L_{X^{(k)}}}{\partial \dot{x}^{(k)}} \right) - \frac{\partial L_{X^{(k)}}}{\partial x^{(k)}} = 0;$$

(iii)  $\dot{\varphi}_0 \in \Delta_{\mathcal{I}}$  and the path  $\varphi_t$  is critical for the action

$$S[\varphi] = \int_0^1 L(\varphi, \dot{\varphi}) dt$$

with respect to variations  $\delta\varphi_t \in T \text{SDiff}(M)$  which vanish at the endpoints;

(iv)  $\xi_{x^{(k)}}^{(k)}(t) = 0$  and the path  $x^{(k)}(t)$  is critical for the action

$$S[x^{(k)}] = \int_0^1 L_{X^{(k)}}(x^{(k)}, \dot{x}^{(k)}) dt = 0$$

with respect to arbitrary variations  $\delta x^{(k)}$  with fixed endpoints.

*Proof.* As  $\ell^{(k)}$  is quadratic in  $\xi_{x^{(k)}}^{(k)}$ , we conclude that the fiber derivative  $\partial\ell^{(k)}/\partial\xi_{x^{(k)}}^{(k)}$  at  $\xi_{x^{(k)}}^{(k)} = 0$  vanishes. Thus  $F = 0$ . Moreover, by Lemma 5.1, we know that the constraint  $\dot{\varphi} \in \Delta_{\mathcal{I}}$  is redundant when  $\dot{\varphi}_0 \in \Delta_{\mathcal{I}}$ . The equivalence of items (i) through (iv) is a re-statement of Theorem 5.1 with  $F = 0$  and this redundancy of the constraints.  $\square$

**Remark 5.3.** Corollary 5.1 can be seen as a Lagrangian analog of the Hamiltonization methods used in non-holonomic systems. In particular, Corollary 5.1 deals with a *Chaplygin system* and can be seen as a special case of [Koi92, theorem 8.4]. We thank Paula Balseiro for pointing out this observation.  $\diamond$

**Remark 5.4.** Variational particle methods for the EPDiff equation have been implemented and analyzed in [CDTM12] using the reconstruction mapping mentioned in Remark 2.1. The convergence of this method was used to prove global existence and uniqueness in [CLP12]. Therefore, these ideas are not without precedent when  $k = 0$ . Moreover, an algorithm using Gaussian particle velocity fields for the purpose of image registration algorithms is described in [SNDP13] for arbitrary  $k$  and implemented for the case where  $k = 1$ .

Corollary 5.1 suggests that we may estimate solutions to certain Lagrangian systems on  $\text{SDiff}(M)$  by solving an Euler-Lagrange equation on  $X^{(k)}$ . Then the estimated spatial velocity field would be given by  $\mathcal{I}(\dot{x}^{(k)})$ . Such methods exhibit potentially desirable properties, which we clarify now.

**5.1. Kelvin's circulation theorem for particles.** Recall the remaining symmetry of the horizontal equation mentioned in Remark 4.3. If the  $k^{\text{th}}$  order interpolation method is compatible with this symmetry, then the numerical method suggested in Corollary 5.1(ii) also possesses this symmetry. This is a valuable property if one searches for numerical methods conserving geometric features of the system. We formalize this statement in the following theorem.



**Theorem 5.5.** *Assume the setup of Corollary 5.1. Let  $x^{(k)}(t) \in X^{(k)}$  be an integral curve of the Euler-Lagrange equations for  $L_{X^{(k)}}$ . If the interpolation method,  $\mathcal{I}$ , is  $\mathcal{J}_{\odot}^k(G_{\odot})$ -invariant, then  $L_{X^{(k)}}$  is  $\mathcal{J}_{\odot}^k(G_{\odot})$ -invariant. Moreover, for each  $\omega$  in the Lie algebra of  $\mathcal{J}_{\odot}^k(G_{\odot})$ , the quantity*

$$J_{\omega}(\dot{x}^{(k)}) := \langle \dot{x}^{(k)}, x^{(k)} \circ \omega \rangle_X$$

*is conserved. Here,  $x \circ \omega \in T_x X^{(k)}$  is given by  $x \circ \omega := \left. \frac{d}{d\epsilon} \right|_{\epsilon=0} (x \circ y_{\epsilon})$  for an arbitrary curve  $y_{\epsilon}$ , such that  $\left. \frac{dy_{\epsilon}}{d\epsilon} \right|_{\epsilon=0} = \omega$  (composition is for jets). Finally,  $J_{\omega}(T\pi(\dot{\varphi}_t))$  is a conserved quantity for the Euler-Lagrange equations on  $\text{SDiff}(M)$ , where  $j_{\odot}^k : \text{SDiff}(M) \rightarrow X^{(k)}$  is the quotient projection. If  $\dot{\varphi}_0 \in \Delta_{\mathcal{I}}$  and  $\dot{x}_0^{(k)} = j_{\odot}^k(\dot{\varphi}_0)$ , then  $J_{\omega}(\dot{x}^{(k)}) = J_{\omega}(j_{\odot}^k(\dot{\varphi}))$ .*

*Proof.* If  $\mathcal{I}(\cdot)$  is  $\mathcal{J}_{\odot}^k(G_{\odot})$ -invariant, then  $\mathcal{I}(\dot{x} \circ y) = \mathcal{I}(\dot{x})$  for all  $y \in \mathcal{J}_{\odot}^k(G_{\odot})$ . Thus  $L_{X^{(k)}}(\dot{x} \circ y) = L(\mathcal{I}(\dot{x} \circ y)) = L(\mathcal{I}(\dot{x})) = L_{X^{(k)}}(\dot{x})$ , and so  $L_{X^{(k)}}$  is  $\mathcal{J}_{\odot}^k(G_{\odot})$ -invariant. Moreover, if  $L$  is  $G_{\odot}$ -invariant, then  $\ell^{(k)}$  is  $G_{\odot}/G_{\odot}^{(k)}$  invariant. Remembering the identification  $\mathcal{J}_{\odot}^k(G_{\odot}) \cong G_{\odot}/G_{\odot}^{(k)}$ , the desired invariance holds for  $\ell^{(k)}$ . By Noether's Theorem,  $J_{\omega}(\dot{x})$  and  $J_{\omega}(T\pi(\dot{\varphi}))$  are conserved along the flow of the Euler-Lagrange equations for  $L$  and  $L_{X^{(k)}}$ , respectively. If, in addition  $\dot{\varphi}_0 \in \Delta_{\mathcal{I}}$  and  $\dot{x}_0^{(k)} = j_{\odot}^k(\dot{\varphi}_0)$ , then  $\dot{x}^{(k)} = j_{\odot}^k(\dot{\varphi})$  by Corollary 5.1 and the theorem follows.  $\square$

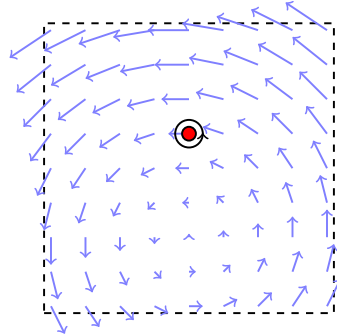


FIGURE 2. A particle-centric version of Kelvin's circulation theorem corresponds to conservation of circulation along infinitesimal curves circling the particles. For  $k = 1$  this implies that the momenta conjugate to the spin and the rate of stretching are conserved.

Theorem 5.5 may be viewed as a particle-centric version of Kelvin's circulation theorem. In particular, it is known that the conserved quantity for the particle relabeling symmetry of an ideal fluid is given by the circulation. This implies that the integral of the dot product of the fluid velocity along the tangent vector of an advected closed curve is conserved by the inviscid fluid equations [AK92, Chapter 1]. Theorem 5.5 tells us that infinitesimal loops around the particles (see Figure

2) conserve the same quantity and this conservation law can be manifested in a higher order particle method. If  $k = 1$ , this implies that the flow conserves the momenta conjugate to the ‘spin’ and ‘strain rate’ of the particles. For  $k > 1$ , we can interpret the conserved quantities as manifestations of Kelvin’s circulation for  $k^{\text{th}}$  order perturbations of these infinitesimal loops. Therefore, when modeling a fluid using a *finite dimensional* Lagrangian system on  $X^{(k)}$  with Lagrangian  $L_{X^{(k)}}$ , one can better control the conservation of momenta and Kelvin’s circulation theorem. In principle, this manifestation of Noether’s theorem should allow one to construct integrators that conserve momenta in discrete time; see [MW01] or [HLW02] for details.

**5.2. Spectral Methods and Hybrid Spectral-Particle Methods.** Although the map  $\mathcal{I}$  generally depends on the locations of each of the particles, this may not always be true. Building upon the ideas of the previous section, we can consider a method which is independent of particle locations for the case  $k = 0$ . To do this, choose  $N$  linearly independent vector fields,  $u_1, \dots, u_N \in \mathfrak{X}_{\text{div}}(M)$ . Then construct the interpolation method  $\mathcal{I} : TX \rightarrow \mathfrak{X}_{\text{div}}(M)$  given by

$$(31) \quad \mathcal{I}(\dot{x}) = \sum_{i=1}^N c_i(\dot{x})u_i,$$

where the coefficients  $c_i$  are described implicitly by the constraints of Definition 4.1 (it is a linear algebraic inverse problem). The image of the interpolation method given by (31) on a tangent fiber  $T_x X$  is independent of the base point  $x \in X$ . In other words, for each vector field given by  $\mathcal{I}(x, \dot{x})$  and any point  $y \in X$  we can find a  $\dot{y} \in T_y X$  such that  $\mathcal{I}(y, \dot{y}) = \mathcal{I}(x, \dot{x})$ . To prove this, consider two distinct particle configurations,  $x, y \in X$ . Let  $\dot{x} \in T_x X$  and let  $c_1, \dots, c_N \in \mathbb{R}$  satisfy (31). As the range of  $\mathcal{I}$  on the fiber  $T_x X$  is identical to the range of  $\mathcal{I}$  on the fiber  $T_y X$  (it is always in the span of  $u_1, \dots, u_N$  by (31)), we choose  $\dot{y} = \mathcal{I}^{-1}|_{T_y X}(\mathcal{I}(x, \dot{x}))$ . By construction,  $\mathcal{I}(x, \dot{x}) = \mathcal{I}(y, \dot{y})$ . In summary, the interpolation method (31) produces a *spectral method*. That is to say, solving the Lagrange-d’Alembert equations of Theorem 5.1, boils down to solving for vector fields contained in the finite dimensional subspace  $V := \text{span}\{u_1, \dots, u_N\}$  of the infinite dimensional vector space  $\mathfrak{X}_{\text{div}}(M)$ .

**Remark 5.6.** One should probably choose  $\{u_1, \dots, u_N\}$  such that the space orthogonal to the span of  $\{u_1, \dots, u_N\}$  is a function space of decreasing regularity for increasing  $N$ , e.g., a Fourier basis on  $M = \mathbb{R}^d$ .

Judicious choices of bases lead to nice error bounds. One does not need to choose a full basis, however. One could choose vector fields  $u_1, \dots, u_K$  for  $K < N$

to construct an interpolation method of the form

$$(32) \quad \mathcal{I}(\dot{x}) = \left( \sum_{i=1}^K c_i u_i \right) + \left( \sum_{i=K+1}^N \mathcal{I}_i(x_{K+1}, \dots, x_N, \dot{x}_i) \right)$$

which is partially spectral but may depend on the locations of the particles of  $x_{K+1}, \dots, x_N$ . The  $\mathcal{I}_i$ 's are vector bundle morphisms to the vector space  $\mathfrak{X}_{\text{div}}(M)$  such that  $\mathcal{I}$  is an interpolation method (this condition does not determine the  $\mathcal{I}_i$ 's and so one still has some freedom in choosing these maps). The method induced by (32) can be considered a multiscale model. We can speculate this claim when  $u_1, \dots, u_k$  are chosen to keep track of the ‘large-scale dynamics’ while the remaining degrees of freedom (which depend on the motion of particles) can be interpreted as ‘fine-scale parameters’.

**5.3. Vortex Methods.** It was shown in [OS01] that Chorin’s vortex blob algorithm (originally developed for simulating inviscid fluids) provides an exact solution to the equations of motion for an ideal, inviscid, homogeneous, incompressible second grade fluid. More specifically, Chorin’s vortex blob algorithm yields solutions to the Lagrangian system on  $\text{SDiff}(M)$  with the reduced Lagrangian given in terms of the spatial velocity by

$$(33) \quad \ell_\alpha^{(1)}(u) := \frac{1}{2} \int_{\mathbb{R}^2} u(m) \cdot ([1 - \alpha^2 \Delta] \cdot u)(m) dm,$$

for some  $\alpha > 0$ . By construction, the vortex blob method conserves circulation by advecting Gaussian blobs of vorticity. In this subsection, we will describe in words how the vortex blob method may be viewed as a particular case of the algorithm described in this paper. Consider a first order interpolation method,  $\mathcal{I}$ , such that the spin of each particle is mapped by  $\mathcal{I}$  to the spatial velocity field of a vortex blob, and the translational component of the particles is mapped by  $\mathcal{I}$  to a spatial velocity field with zero vorticity above each particle. Then, by Theorem 5.5, if we initialize the system with a spatial velocity field consisting solely of vortex blobs located above the particles, it follows that  $\mathcal{I}(\dot{x})$  remains a sum of vortex blobs for all time. Additionally, the particles are advected by these vortex blobs and the vorticities extremize the action of  $\ell_\alpha^{(1)}$ . This is precisely the evolution of the vortex blob algorithm.

Additionally, there are variants of the vortex blob method which allow for deformations of vortex blobs, as would be the case of an algorithm induced by a  $k^{\text{th}}$  order interpolation method for  $k > 1$ . For example, [UWB12] used Hermite functions to generate a basis of vorticity functions above each vortex blob to do just this. It is not immediately clear whether the method of [UWB12] satisfies a variational principle and so it is not known whether such a method matches the framework described in this paper. Nonetheless, appealing to higher-order deformations of vortices did yield higher accuracy in numerical experiments for the case  $k = 2$ . Another interesting method potentially linked to our approach,

is the adaptive smoothed particle hydrodynamics proposed in [SMVO96] wherein the particles are equipped with shape data.

## 6. EXTENSIONS TO OTHER FLUIDS

Given the structure presented so far, we may summarize the process of extending these ideas to other types of fluids. In this section, we sketch constructions to apply this framework to complex fluids, Euler- $\alpha$  models, and template matching problems.

**6.1. Complex Fluids.** Consider the set  $\mathcal{F}(M, \mathcal{O})$  of smooth maps from a manifold  $M$  to a Lie group  $\mathcal{O}$ . The Lie group  $\text{SDiff}(M)$  acts on  $\mathcal{F}(M, \mathcal{O})$  on the right by group homomorphisms via  $f \in \mathcal{F}(M, \mathcal{O}) \mapsto f \circ \varphi \in \mathcal{F}(M, \mathcal{O})$  for each  $\varphi \in \text{SDiff}(M)$ . This right action defines the semi-direct product Lie group  $\text{SDiff}(M) \ltimes \mathcal{F}(M, \mathcal{O})$ , where the group multiplication is  $(\varphi_1, f_1) \cdot (\varphi_2, f_2) := (\varphi_1 \circ \varphi_2, (f_1 \circ \varphi_2) \cdot f_2)$ . A unifying framework for ideal complex fluids was described in [GBR09] by performing Euler-Poincaré reduction on Lagrangian systems with configuration manifolds of the form  $\text{SDiff}(M) \ltimes \mathcal{F}(M, \mathcal{O})$ . The number of scenarios captured by this framework is truly remarkable (magnetohydrodynamics, spin-glass fluids, liquid crystals, fluids with microstructure, Yang-Mills fluids, superfluids, etc.). As with ideal fluids, these systems exhibit  $\text{SDiff}(M)$  symmetry, and so it should be clear that one may reduce by  $G_{\odot}^{(k)} \subset \text{SDiff}(M)$ . This could be particularly fruitful for the case of fluids with microstructure, where the Lagrangian depends on the relative orientations of fluid particles. For example, in the case of micromorphic nematic liquid crystals,  $\mathcal{O} = \text{SO}(3)$ . We see that  $X^{(1)}$  for  $M = \mathbb{R}^3$  is (upon allowing particles to overlap) the trivial bundle  $(\mathbb{R}^3)^N \times \text{SL}(3, \mathbb{R})^N$ . Since  $\text{SO}(3)$  is a subgroup of  $\text{SL}(3, \mathbb{R})$ , it follows that a method on  $X^{(1)}$  is capable of expressing the orientation of liquid crystals. However, the Lagrangian for liquid crystals usually depends on the gradient of a field in  $\mathcal{F}(M, \mathcal{O})$ . Thus, we must be able to express gradients of diffeomorphisms above each particle, and this suggests reducing by  $G_{\odot}^{(2)}$  and using Euler-Lagrange equations on  $X^{(2)}$  to model liquid crystals.

**6.2. Second grade fluids and template matching problems.** A kinetic energy on  $M = \mathbb{R}^3$  given by (33) with  $\alpha > 0$  leads to the Euler- $\alpha$  model in the incompressible case. We may even consider the Lagrangian

$$L_{\mathbb{I}}(\varphi, \dot{\varphi}) = \frac{1}{2} \int u \cdot \mathbb{I}(u) d^3x,$$

where  $\mathbb{I}$  is a positive definite differential operator on  $\mathfrak{X}(M)$  (again, the Helmholtz operator  $I - \alpha\Delta$  is a good example). The momentum conjugate to  $u$  is given by the convolution  $G * u$ , where  $G$  is the Green's function for  $\mathbb{I}$ . In this case, we may even consider compressible fluids if we use interpolation methods which map to the full set of smooth vector fields on  $M$  (see [HSS09, Chapter 11] for a good

overview). Moreover, if  $G$  is non-singular, the interpolation methods mentioned in Example 2.1 exhibits a mechanical connection and allows us to use Corollary 5.1 to produce particle methods. Such methods could be useful in the case of template matching problems, wherein one seeks to find a distance between images by integrating geodesic flows on  $\text{Diff}(M)$  (see, [BMTY05, BGBHR11]). In such a scenario, the material representation of the “fluid” is particularly meaningful, and particle methods become a natural choice (see [BEHGB11, BBC<sup>+</sup>12]). In particular, the use of jet-data has already been explored for arbitrary  $k$  in  $\mathbb{R}^2$  and a particle based algorithm has been implemented for  $k = 1$  [SNDP13].

## 7. CONCLUSIONS

Since the publication of [Arn66], it has been well known that Euler’s equations of motion for an ideal, inviscid, incompressible, homogeneous fluid may be regarded as Euler-Poincaré equations on the Lie algebra of divergence free vector fields tangent to the boundary. Therefore, it has been clear that one could reduce by various subgroups of the diffeomorphism group. In this paper we have accomplished one version of this reduction, using the notion of an interpolation method. We chose to use interpolation methods instead of principal connections (as in [CMR01]) to clarify the notion of estimating the velocity field of the fluid with *particles*. Specifically, if an interpolation method is chosen, one may estimate the spatial velocity field of the fluid and even estimate the evolution of the system over short times by integrating a non-holonomically constrained version of the equations. We also discussed the reduction process for higher-order isotropy groups. This discussion led to more sophisticated particle methods which contained extra symmetry and a particle-centric version of Kelvin’s circulation theorem. The particle-centric Kelvin’s theorem was particularly meaningful, since the integrals of motion are conserved by the exact evolution on  $\text{SDiff}(M)$ .

Future work includes:

- Implementing an instance of the particle method described in Theorem 5.1 and Corollary 5.1 for  $k > 1$  and comparing performance with the vortex blob method and a smooth-particle hydrodynamics method.
- Extending these constructions to the fluids and applications mentioned in §6. In particular, we would like to consider applications to liquid crystals and image registration problems.
- Appending a finite dimensional model of the vertical Lagrange-Poincaré equations would yield a finite dimensional model of a fluid on a principal bundle (or, equivalently, a transitive Lie groupoid). This would generalize the integrator described in [GMP<sup>+</sup>11] which models fluid on a finite dimensional Lie group and be viewed as a turbulence model in the spirit of [HT12].

**Acknowledgments.** We thank Andrea Bertozzi and David Uminsky for listening to our ideas and educating us on state of the art vortex blob methods. We also

thank Chris Anderson, Marcel Oliver, and Melvin Leok for helping us avoid certain common pitfalls which occur when the theoretically minded venture into numerics. We owe special thanks to Darryl D. Holm, Hui Sun, and Joris Vankerschaver for thoughtful discussions and suggestions. Finally, we thank Jerrold E. Marsden who spent the final years of his life advising the first author with much thought and care. H. Jacobs and M. Desbrun were funded by NSF grant CCF-1011944. T.S. Ratiu was partially supported by the government grant of the Russian Federation for support of research projects implemented by leading scientists, Lomonosov Moscow State University under the agreement No. 11.G34.31.0054 and Swiss NSF grant 200021-140238.

#### APPENDIX A. A COORDINATE FREE DERIVATION OF THE LIN CONSTRAINTS

Let  $G$  be a Lie group with Lie algebra  $\mathfrak{g}$ . We will adopt the standard convention wherein the Lie bracket of  $\mathfrak{g}$  is taken to be the Jacobi-Lie bracket of *left* invariant vector fields. For each  $g \in G$  let  $R_g : G \rightarrow G$  denote the map given by right-multiplication by  $g$  and let  $\rho \in \Omega^1(G; \mathfrak{g})$  be the (right) Maurer-Cartan form

$$(34) \quad \rho(v_g) = TR_g^{-1} \cdot v_g, \quad v_g \in T_g G.$$

By the definition of the exterior-derivative we see that for any  $X, Y \in \mathfrak{X}(G)$  we have

$$d\rho(X, Y) = \mathcal{L}_X[\rho(Y)] - \mathcal{L}_Y[\rho(X)] - \rho([X, Y]),$$

where  $\mathcal{L}_X$  is the Lie derivative defined by the vector field  $X$ . If  $u_g, v_g \in T_g G$ , define  $\xi := \rho(u_g)$ ,  $\eta := \rho(v_g)$  and construct the right-invariant vector fields  $\xi_R, \eta_R \in \mathfrak{X}(G)$  defined by  $\xi_R(h) = \xi \cdot h$  and  $\eta_R(h) = \eta \cdot h$  for any  $h \in G$ . Using this we find

$$\begin{aligned} d\rho(u_g, v_g) &= d\rho(\xi_R(g), \eta_R(g)) = d\rho(\xi_R, \eta_R)(g) \\ &= \{ \mathcal{L}_{\xi_R}[\rho(\eta_R)] - \mathcal{L}_{\eta_R}[\rho(\xi_R)] - \rho([\xi_R, \eta_R]) \} (g) \\ &= -\rho(-[\xi, \eta]_R)(g) = [\xi, \eta] \\ &= [\rho(u_g), \rho(v_g)]. \end{aligned}$$

This is the *Maurer-Cartan equation*.

**Proposition A.1.** *Let  $U \subset \mathbb{R}^2$  be an open set and let  $g : U \rightarrow G$  be an embedding. If we coordinatize  $U$  by  $(s, t)$  and let  $\partial_s$  and  $\partial_t$  denote the corresponding vector fields in  $\mathfrak{X}(U)$ , define  $\dot{g} := Tg \circ \partial_t$  and  $\delta g := Tg \circ \partial_s$ . Finally, if  $\xi := \rho \circ \dot{g}$  and  $\eta := \rho \circ \delta g$ , then*

$$\partial_s \xi = \partial_t \eta + [\eta, \xi]$$

*Proof.* As  $g : U \rightarrow G$  is an embedding, we see that  $g(U)$  is a surface in  $G$ . Moreover,  $\dot{g}(s, t)$  is a vector over  $g(s, t)$  tangent to the surface  $g(U)$ . The same holds for  $\delta g(s, t)$ . Let  $X, Y \in \mathfrak{X}(G)$  be arbitrary vector fields which satisfy  $X(g(s, t)) = \dot{g}(s, t)$  and  $Y(g(s, t)) = \delta g(s, t)$  for any  $(s, t) \in U$ . Then  $g_*(\partial_t), g_*(\partial_s) \in \mathfrak{X}(g(U))$  and  $X, Y \in \mathfrak{X}(G)$  satisfy  $X|_{g(U)} = g_*(\partial_t)$  and  $Y|_{g(U)} = g_*(\partial_s)$ .

By the Maurer-Cartan equation we see that

$$d\rho(\dot{g}(s, t), \delta g(s, t)) = [\xi(s, t), \eta(s, t)].$$

However, by the definition of the exterior derivative we see that

$$\begin{aligned} d\rho(\dot{g}(s, t), \delta g(s, t)) &= d\rho(X, Y)(g(s, t)) \\ &= \{\mathcal{L}_X[\rho(Y)] - \mathcal{L}_Y[\rho(X)] - \rho([X, Y])\}(g(s, t)). \end{aligned}$$

Let us look at each of the terms of this sum individually. We find

$$\mathcal{L}_X[\rho(Y)](g(s, t)) = \left. \frac{d}{d\tau} \right|_{\tau=0} \rho(Y(\Phi_X^\tau(g(s, t))))$$

where  $\Phi_X^\tau$  is the flow of  $X$ . As  $X$  is tangential to the surface  $g(U)$  we see that  $\Phi_X^\tau(g(s, t)) \in g(U)$ . In particular  $\Phi_X^\tau(g(s, t)) = g(s, t + \tau)$  by uniqueness of integral curves of  $X$ . Thus  $\rho(Y(\Phi_X^\tau(g(s, t)))) = \rho(Y(g(s, t + \tau))) = \rho(\delta g(s, t + \tau)) = \eta(s, t + \tau)$ . In conclusion

$$\mathcal{L}_X[\rho(Y)](g(s, t)) = \partial_t \eta(s, t).$$

By the same token

$$\mathcal{L}_Y[\rho(X)](g(s, t)) = \partial_s \xi.$$

Finally, as  $g : U \rightarrow G$  is an embedding, it preserves the Jacobi-Lie bracket of vector field from  $\mathfrak{X}(U)$  to  $\mathfrak{X}(g(U))$ . Thus we find

$$[X, Y]|_{g(U)} = [g_*(\partial_t), g_*(\partial_s)] = g_*[\partial_t, \partial_s] = 0$$

and hence

$$\rho([X, Y])(g(s, t)) = \rho([X, Y](g(s, t))) = \rho(0) = 0.$$

Therefore  $[\xi, \eta] = d\rho(\dot{g}, \delta g) = \partial_t \eta - \partial_s \xi$ .  $\square$

In the applications of this paper,  $g(s, t)$  appears as a deformation of a given smooth curve  $g(t)$ . We shall always use these deformations to be at least immersions, which are locally embeddings around a point in  $G$ .

As a final note we remind the reader that the bracket above is with respect to the left-Lie algebra. However, the relation between the left Lie algebra and the right Lie algebra is given by  $[\xi, \eta]_L = -[\xi, \eta]_R$ . Therefore, if one works in the right Lie algebra, then the above proposition states  $\partial_s \xi = \partial_t \eta - [\eta, \xi]_R$ .

In the applications used in this paper, the group is  $\text{SDiff}(M)$  whose *left* Lie algebra is  $\mathfrak{X}_{\text{div}}(M)$  endowed with minus the standard Jacobi-Lie bracket of vector fields. So, if  $\varphi : U \subset \mathbb{R}^2 \rightarrow \text{SDiff}(M)$  is an embedding and  $\dot{\varphi} = T\varphi \circ \partial_t$ ,  $\delta\varphi = T\varphi \circ \partial_s$ ,  $u(s, t) = \dot{\varphi}(s, t) \circ \varphi(s, t)^{-1}$ , and  $v(s, t) = \delta\varphi(s, t) \circ \varphi(s, t)^{-1}$ , we have

$$(35) \quad \frac{\partial}{\partial s} u = \frac{\partial}{\partial t} v - [v, u]_{\text{Jacobi-Lie}}.$$

## REFERENCES

- [AK92] V I Arnold and B A Khesin, *Topological methods in hydrodynamics*, Applied Mathematical Sciences, vol. 24, Springer Verlag, 1992.
- [AM78] Ralph Abraham and Jerrold E. Marsden, *Foundations of Mechanics*, Benjamin/Cummings Publishing Co. Inc. Advanced Book Program, Reading, Mass., 1978, Second edition, revised and enlarged, with the assistance of Tudor Ratiu and Richard Cushman. Reprinted by AMS Chelsea, 2008. MR 515141 (81e:58025)
- [Arn66] V I Arnold, *Sur la géométrie différentielle des groupes de Lie de dimension infinie et ses applications à l'hydrodynamique des fluides parfaits*, Annales de l'Institut Fourier **16** (1966), 316–361.
- [Arn00] ———, *Mathematical methods of classical mechanics*, 2nd ed., Springer, 2000.
- [BBC<sup>+</sup>12] M. Bauer, M. Bruveris, C. Cotter, S. Marsland, and P. W. Michor, *Constructing reparametrization invariant metrics on the spaces of plane curves*, arXiv:1207.5965 [math.DG], July 2012.
- [BEHGB11] M. Bruveris, C. P. Ellis, D. D. Holm, and F Gay-Balmaz, *Un-reduction*, Journal of Geometric Mechanics **4** (2011), 363–387.
- [BGBHR11] M. Bruveris, F. Gay-Balmaz, D.D. Holm, and T.S. Ratiu, *The momentum map representation of images.*, J. Nonlinear Sci. **21** (2011), no. 1, 115–150 (English).
- [Ble81] David Bleecker, *Gauge Theory and Variational Principles*, Global Analysis Pure and Applied Series A, vol. 1, Addison-Wesley Publishing Co., Reading, Mass., reprinted by Dover, 2005, 1981. MR 643361 (83h:53049)
- [Blo03] A M Bloch, *Nonholonomic mechanics and control*, Interdisciplinary Applied Mathematics, vol. 24, Springer Verlag, 2003.
- [BMTY05] M. F. Beg, M. I. Miller, A. Trouvé, and L. Younes, *Computing large deformation metric mappings via geodesic flows of diffeomorphisms*, International journal of computer vision **61** (2005), no. 2, 139–157.
- [Can75] M. Cantor, *Perfect fluid flows over  $\mathbf{R}^n$  with asymptotic conditions*, J. Funct. Anal. **18** (1975), 73–84. MR 0380872 (52 #1769)
- [CDTM12] A Chertock, P Du Toit, and J E Marsden, *Integration of the EPDiff equation by particle methods*, ESAIM: Mathematical Modelling and Numerical Analysis **46** (2012), 515–534.
- [CLP12] A Chertock, J G Liu, and T Pendleton, *Convergence of a particle method and global weak solutions of a family of evolution PDEs*, SIAM J. Numer. Anal. **50** (2012), no. 1, 1–21.
- [CMR01] Hernán Cendra, Jerrold E. Marsden, and Tudor S. Ratiu, *Lagrangian reduction by stages*, Mem. Amer. Math. Soc. **152** (2001), no. 722. MR 1840979 (2002c:37081)
- [EM70] D G Ebin and J E Marsden, *Groups of diffeomorphisms and the motion of an incompressible fluid*, The Annals of Mathematics **92** (1970), 102–163.
- [FHT01] Ciprian Foias, Darryl D Holm, and Edriss S Titi, *The Navier–Stokes-alpha model of fluid turbulence*, Physica D: Nonlinear Phenomena **152** (2001), 505–519.
- [GBR09] F Gay-Balmaz and T S Ratiu, *The geometric structure of complex fluids*, Advances in Applied Mathematics **42** (2009), 176–275.
- [GMP<sup>+</sup>11] E S Gawlik, P Mullen, D Pavlov, J E Marsden, and M Desbrun, *Geometric, variational discretization of continuum theories*, Physica D: Nonlinear Phenomena **240** (2011), no. 21, 1724–1760.
- [GT06] Vladimir Gol'dshtein and Marc Troyanov, *Sobolev inequalities for differential forms and  $L_{q,p}$ -cohomology*, J. Geom. Anal. **16** (2006), no. 4, 597–631. MR 2271946 (2008a:58024)



- [HLW02] E Hairer, C Lubich, and G Wanner, *Geometric numerical integration, structure preserving algorithms for ordinary differential equations*, Series in Computational Mathematics, vol. 31, Springer Verlag, 2002.
- [HMR98] D. D. Holm, J. E. Marsden, and T. S. Ratiu, *Euler-Poincaré models of ideal fluids with nonlinear dispersion*, Phys. Rev. Lett. **349** (1998), 4173–4177.
- [Hol02] D D Holm, *Euler-Poincaré dynamics of perfect complex fluids*, Geometry, Mechanics, and Dynamics: Volume in honor of the 60th birthday of J. E. Marsden (Newton, P and Holmes, P and Weinstein, A, ed.), Fields Institute, 2002, pp. 113–167.
- [HSS09] D D Holm, T Schmah, and C Stoica, *Geometric mechanics and symmetry*, Oxford University Press, 2009.
- [HT12] D D Holm and C Tronci, *Multiscale turbulence models based on convected fluid microstructure*, Journal of Mathematical Physics **53** (2012), no. 11, 115614.
- [Jos11] Jürgen Jost, *Riemannian Geometry and Geometric Analysis*, sixth ed., Universitext, Springer, Heidelberg, 2011. MR 2829653
- [JV12] H O Jacobs and J Vankerschaver, *On the use of Lie groupoids in fluid structure interactions*, arXiv:1212.1144 [math.DS], Dec 2012.
- [KMS99] I Kolář, P W Michor, and J Slovák, *Natural operations in differential geometry*, Springer Verlag, 1999.
- [Koi92] J. Koiller, *Reduction of some classical non-holonomic systems with symmetry*, Archive for Rational Mechanics and Analysis **118** (1992), 113–148.
- [MD10] D Mumford and A Desolneux, *Pattern theory : The stochastic analysis of real-world signals*, A K Peters, 2010.
- [MMar] D Mumford and P W Michor, *On Euler’s equation and ‘EPDiff’*, Journal of Geometric Mechanics (to appear), arXiv:1209.6576 [math.AP].
- [MMR90] J E Marsden, R Montgomery, and T S Ratiu, *Reduction, symmetry, and phases in mechanics*, Memoirs of the American Mathematical Society, vol. 88(436), American Mathematical Society, 1990.
- [MR99] J E Marsden and T S Ratiu, *Introduction to mechanics and symmetry*, 2nd ed., Texts in Applied Mathematics, vol. 17, Springer Verlag, 1999.
- [MW83] J. E. Marsden and A. Weinstein, *Coadjoint orbits, vortices, and Clebsch variables for incompressible fluids*, Physica D **7** (1983), 305–323.
- [MW01] J E Marsden and M West, *Discrete mechanics and variational integrators*, Acta Numerica (2001), 357–514.
- [OS01] M Oliver and S Shkoller, *The vortex blob method as a second-grade non-Newtonian fluid*, Communications in Partial Differential Equations **22** (2001), 295–314.
- [Sch95] Günter Schwarz, *Hodge Decomposition—A Method for Solving Boundary Value Problems*, Lecture Notes in Mathematics, vol. 1607, Springer-Verlag, Berlin, 1995. MR 1367287 (96k:58222)
- [SMVO96] Paul R. Shapiro, Hugo Martel, Jens V. Villumsen, and J. Michael Owen, *Adaptive smoothed particle hydrodynamics, with application to cosmology: Methodology (i)*, The Astrophysical Journal Supplement Series **103** (1996), 269.
- [SNDP13] S. Sommer, M. Nielsen, S. Darkner, and X. Pennec, *Higher-order momentum distributions and locally affine lddmm registration*, SIAM Journal on Imaging Sciences **6** (2013), no. 1, 341–367.
- [Tro09] Marc Troyanov, *On the Hodge decomposition in  $\mathbb{R}^n$* , Mosc. Math. J. **9** (2009), no. 4, 899–926, 936. MR 2663996 (2011i:58002)
- [UWB12] D Uminsky, C E Wayne, and A Barbaro, *A multi-moment vortex method for 2d viscous fluids*, Journal of Computational Physics **231** (2012), 1705–1727.