

PARACONTROLLED APPROACH TO THE THREE-DIMENSIONAL STOCHASTIC NONLINEAR WAVE EQUATION WITH QUADRATIC NONLINEARITY

MASSIMILIANO GUBINELLI, HERBERT KOCH, AND TADAHIRO OH

ABSTRACT. Using ideas from paracontrolled calculus, we prove local well-posedness of a renormalized version of the three-dimensional stochastic nonlinear wave equation with quadratic nonlinearity forced by an additive space-time white noise on a periodic domain. There are two new ingredients as compared to the parabolic setting. (i) In constructing stochastic objects, we have to carefully exploit dispersion at a multilinear level. (ii) We introduce novel random operators and leverage their regularity to overcome the lack of smoothing of usual paradifferential commutators.

CONTENTS

1. Introduction	2
1.1. Singular stochastic nonlinear wave equations	2
1.2. The Da Prato–Debussche trick	4
1.3. The paracontrolled approach	6
2. Notations and basic lemmas	18
2.1. Sobolev spaces and Besov spaces	18
2.2. On discrete convolutions	19
2.3. Strichartz estimates	19
2.4. Tools from stochastic analysis	20
3. On the stochastic terms, Part I	22
4. On the stochastic terms, Part II	28
5. Paracontrolled operators	34
6. Proof of Theorem 1.12	41
7. On the weak universality of the renormalized SNLW	43
References	46

2010 *Mathematics Subject Classification.* 35L71, 60H15.

Key words and phrases. stochastic nonlinear wave equation; nonlinear wave equation; renormalization; white noise; paracontrolled calculus.

1. INTRODUCTION

1.1. Singular stochastic nonlinear wave equations. We continue the study of singular stochastic nonlinear wave equations (SNLW) driven by additive space-time white noise initiated in [36]. There we studied the case of the SNLW equation with a polynomial nonlinearity on the two-dimensional torus $\mathbb{T}^2 = (\mathbb{R}/2\pi\mathbb{Z})^2$. By introducing a suitable renormalization of the nonlinearity, we proved a local-in-time existence and uniqueness theory. Global solutions on \mathbb{T}^2 have been obtained in [37] for the defocusing cubic nonlinearity. See also [89] for an analogous global well-posedness result on the Euclidean space \mathbb{R}^2 . Here, we consider SNLW on the three-dimensional torus $\mathbb{T}^3 = (\mathbb{R}/2\pi\mathbb{Z})^3$ starting with the case of quadratic nonlinearity. Our aim is to provide a local well-posedness theory for the equation which formally reads

$$\begin{cases} \partial_t^2 u + (1 - \Delta)u = -u^2 + \infty + \xi \\ (u, \partial_t u)|_{t=0} = (u_0, u_1) \in \mathcal{H}^s(\mathbb{T}^3), \end{cases} \quad (x, t) \in \mathbb{T}^3 \times \mathbb{R}_+, \quad (1.1)$$

where $\mathcal{H}^s(\mathbb{T}^3) = H^s(\mathbb{T}^3) \times H^{s-1}(\mathbb{T}^3)$ and $\xi(x, t)$ denotes a (Gaussian) space-time white noise on $\mathbb{T}^3 \times \mathbb{R}_+$ with the space-time covariance given by

$$\mathbb{E}[\xi(x_1, t_1)\xi(x_2, t_2)] = \delta(x_1 - x_2)\delta(t_1 - t_2).$$

The expression $-u^2 + \infty$ denotes the renormalization of the product u^2 . As we will see below, indeed, solutions to this equation are expected to be distributions of (spatial) regularity below $-\frac{1}{2}$.

We state our main result.

Theorem 1.1. *Given $\frac{1}{4} < s < \frac{1}{2}$, let $(u_0, u_1) \in \mathcal{H}^s(\mathbb{T}^3)$. Given $N \in \mathbb{N}$, let $\xi_N = \pi_N \xi$, where π_N is the frequency projector onto the spatial frequencies $\{|n| \leq N\}$ defined in (1.17) below. Then, there exists a sequence of time-dependent constants $\{\sigma_N(t)\}_{N \in \mathbb{N}}$ tending to ∞ (see (1.20) below) such that, given small $\varepsilon = \varepsilon(s) > 0$, the solution u_N to the following renormalized SNLW:*

$$\begin{cases} \partial_t^2 u_N + (1 - \Delta)u_N = -u_N^2 + \sigma_N + \xi_N \\ (u_N, \partial_t u_N)|_{t=0} = (u_0, u_1) \end{cases} \quad (1.2)$$

converges to a stochastic process $u \in C([0, T]; H^{-\frac{1}{2}-\varepsilon}(\mathbb{T}^3))$ almost surely, where $T = T(\omega)$ is an almost surely positive stopping time.

Furthermore, we will provide a description of the limiting distribution u in terms of the notion of *paracontrolled* distributions introduced in [34].

Let us comment on the need of the renormalized formulation (1.2). In the context of parabolic stochastic partial differential equations (SPDEs), the need and meaning of renormalization of SPDEs have been intensely studied and much progress has been achieved in recent years, starting with Da Prato and Debussche's strong solutions approach [23] to the dynamical Φ_2^4 model, continuing with Hairer's solution of the KPZ equation [40], the subsequent invention of regularity structures [41], and the discovery of alternative approaches such as paracontrolled distributions [34], Kupiainen's RG approach [57, 58], and the approach of Otto, Weber, and coauthors [78, 5, 77].

On the one hand, the theory of regularity structures [41, 27, 42] has since grown into a complete framework [13, 19, 12, 44] which can deal with a large class of parabolic equations (in the so-called *subcritical* regime) such as the dynamical sine-Gordon model [47, 20], the generalized KPZ equation used to describe a natural random evolution on the space of paths over a manifold [43], and other interesting models like those related to Abelian gauge theories [82] or some equations

in the full space [45]. On the other hand, the theory of paracontrolled distributions has revealed itself as an effective method for a restricted class of singular SPDEs [18, 38, 1, 90, 52, 4, 5, 65, 28, 54, 53, 35, 79, 16]. Let us also mention that certain quasilinear parabolic equations can be considered using natural extension of these theories [78, 29, 32].

Singular SPDEs have been shown to describe large scale behavior of many random dynamical models, including both continuous [49, 48, 50, 84, 30, 51] and discrete ones [64, 17, 83, 61, 46, 62]. This phenomenon has been named *weak universality*.

Renormalization can be, in first instance, justified in order to obtain non-trivial (i.e. nonlinear) limiting problems. At a deeper level, singular PDEs and the need of their renormalization are tightly linked with the phenomenon of weak universality. These equations are meant to describe the large scale fluctuations of well-behaved smooth random systems and, in this perspective, both the distributional nature of the solution and the renormalization have clear physical meanings; the irregularity of the solutions is the manifestation of the microscopic random fluctuations, while the renormalization is linked to the fine tuning of the parameters needed to allow for nonlinear fluctuations at the macroscopic level. While this discussion is quite informal and general, this picture can be understood rigorously in many specific cases, at least in the parabolic setting.

As far as wave equations are concerned, it has been observed in [81, 2, 69, 70] that SNLW with regularized additive space-time noise converges to a linear equation as the regularization is removed, essentially independently of the kind of (Lipschitz) nonlinearity considered. This hints to the fact that wave equations also need a certain fine tuning of the parameters in order to exhibit singular nonlinear fluctuations.

All the theories we mentioned above are, however, designed to handle parabolic equations and it is not a priori clear how to adapt them to handle dispersive or hyperbolic phenomena.

Schrödinger and wave equations in two and three dimensions with multiplicative spatial white noise have been considered with spectral methods in [25, 24, 39]. The spatial nature of the noise allowed the authors to use techniques similar to the parabolic setting [1]. In our paper [36], we gave the first example of (non-trivial) weak universality in wave equations by showing that the renormalized SNLW on \mathbb{T}^2 describes a particular large scale limit of a random nonlinear wave equation with smooth noise. There, it was shown how, despite the hyperbolic setting, renormalization proceeds in a way quite similar to the parabolic one.

In the present paper, we will also show that, despite the fact that notions such as *homogeneity* (fundamental in the theory of regularity structures) or Besov-Hölder regularity (similarly fundamental in the theory of paracontrolled distributions in the parabolic setting) are less compelling in the hyperbolic setting, we can set up a paracontrolled analysis of the SNLW equation (1.1) which takes into account multilinear dispersive regularization and renormalization of resonant stochastic terms via the introduction of certain random operators, replacing the commutators standard in the parabolic paracontrolled approach of [34]. Let us note that the control of certain random operators already appeared in the analysis of discrete approximations to the KPZ equation in [38].

As an application of our results, we can identify the solutions to the SNLW equation (1.1) constructed in Theorem 1.1 as the universal limit of a certain class of random wave equations. Consider the following stochastic nonlinear wave equation on $(\kappa^{-1}\mathbb{T})^3 \times \mathbb{R}_+$:

$$\begin{cases} \partial_t^2 w_\kappa + (1 - \Delta)w_\kappa = f(w_\kappa) + a_\kappa^{(0)} + a_\kappa^{(1)}w_\kappa + \kappa^2\eta_\kappa \\ (w_\kappa, \partial_t w_\kappa)|_{t=0} = (0, 0), \end{cases} \quad (1.3)$$

where $\kappa > 0$, where $f : \mathbb{R} \rightarrow \mathbb{R}$ is an arbitrary bounded C^3 -function with bounded derivatives and η_κ is a Gaussian noise which is white in time (for simplicity) and smooth in space with finite range translation-invariant correlations (see (7.1) below for a precise definition). Here, $a_\kappa^{(0)}$ and $a_\kappa^{(1)}$ are parameters to be chosen later. It is not difficult to show that this equation has global smooth solutions. We think of this equation to be a *microscopic* model of a given space-time random field w_κ living on a large spatial domain $(\kappa^{-1}\mathbb{T})^3$ and subject to a very small random driving force of order $\kappa^2 \ll 1$. For technical reasons we prefer to work in a bounded domain but the reader should think that the equation is set up in the full space and that the parameter κ sets the size of the random perturbation. In order to focus on the large scale / long time behavior of the solutions to this equation, we perform an hyperbolic rescaling of the independent variables (x, t) and introduce a new random field u_κ given by

$$u_\kappa(x, t) = \kappa^{-2} w_\kappa(\kappa^{-1}x, \kappa^{-1}t), \quad (x, t) \in \mathbb{T}^3 \times \mathbb{R}_+. \quad (1.4)$$

The following theorem gives a precise description of the limiting behavior of u_κ as $\kappa \rightarrow 0$ and as the parameters $a_\kappa^{(0)}, a_\kappa^{(1)}$ are tuned in order to have

$$f(w_\kappa) + a_\kappa^{(0)} + a_\kappa^{(1)}w_\kappa \simeq w_\kappa^2$$

implying that $w_\kappa = 0$ is a solution of the unperturbed dynamics. Accordingly, the initial data in (1.3) are set to zero in order not to interfere with the analysis of the long time effect of the random perturbation.

Theorem 1.2. *There exists a (time-dependent) choice of the coefficients $a_\kappa^{(0)}, a_\kappa^{(1)} = O(1)$ and an almost surely positive random time T such that the random field u_κ defined in (1.4) converges in probability to a well defined limit u in $C([0, T]; H^{-\frac{1}{2}-\varepsilon}(\mathbb{T}^3))$ as $\kappa \rightarrow 0$. The limiting random field u is (modulo a possible rescaling) a local-in-time solution to the renormalized quadratic SNLW (1.1) with the zero initial data.*

In fact, we will choose the coefficient $a_\kappa^{(1)}$ depending only on f and $\kappa > 0$, namely it is deterministic and independent of time. See (7.7) below.

Remark 1.3. The equation (1.1) indeed corresponds to the stochastic nonlinear Klein-Gordon equation. The same results with inessential modifications also hold for the stochastic nonlinear wave equation, where we replace the left-hand side in (1.1) by $\partial_t^2 u - \Delta u$. In the following, we simply refer to (1.1) as the stochastic nonlinear wave equation.

1.2. The Da Prato–Debussche trick. Let us now describe the strategy which we used in [36, 37] to tackle the renormalization of the two-dimensional SNLW equation:

$$\partial_t^2 u + (1 - \Delta)u = -u^k + \xi, \quad (x, t) \in \mathbb{T}^2 \times \mathbb{R}_+,$$

for a generic monomial nonlinearity u^k . The first step is to introduce a new variable

$$u = \Psi + v, \quad (1.5)$$

where Ψ is the stochastic convolution given by

$$\Psi(t) := \mathcal{I}\xi(t) = \int_0^t \frac{\sin((t-t')\langle \nabla \rangle)}{\langle \nabla \rangle} dW(t').$$

Here, W is a cylindrical Wiener process on $L^2(\mathbb{T}^2)$, and $\mathcal{I} = (\partial_t^2 + 1 - \Delta)^{-1}$ is the Duhamel integral operator, corresponding to the forward fundamental solution to the linear wave equation, and $\langle \nabla \rangle$ is the Fourier multiplier operator corresponding to the multiplier $\langle n \rangle = (1 + |n|^2)^{\frac{1}{2}}$.

By a standard argument, it is easy to see that the stochastic convolution Ψ almost surely has the regularity $C(\mathbb{R}_+; W^{-\varepsilon, \infty}(\mathbb{T}^2))$, $\varepsilon > 0$. Moreover, it can be shown that for each $t > 0$, $\Psi(t) \notin L^2(\mathbb{T}^2)$ almost surely, thus creating an issue in making sense of powers Ψ^k and a fortiori of the full nonlinearity u^k . The appropriate renormalization corresponds to replace the powers $\Psi(t)^k$ by the Wick powers $:\Psi(t)^k:$ of the stochastic convolution. It then follows that the equation for the residual term $v = u - \Psi$ takes the form:

$$(\partial_t^2 + 1 - \Delta)v = - \sum_{\ell=0}^k \binom{k}{\ell} :\Psi^\ell: v^{k-\ell}. \tag{1.6}$$

By viewing $(u_0, u_1, \Psi, :\Psi^2:, \dots, :\Psi^k:)$ as a given *enhanced* data set, we studied the fixed point problem (1.6) for v via the Strichartz estimates¹ (see Lemma 2.4 below) and we proved that the renormalized SNLW on \mathbb{T}^2 is locally well-posed for any integer $k \geq 2$ and is globally well-posed when $k = 3$. See also [75, 72] for a related problem on the deterministic (renormalized) NLW with random initial data.

Remark 1.4. (i) In the field of stochastic parabolic PDEs, the decomposition (1.5) is usually referred to as the Da Prato–Debussche trick [22, 23]. Note that such an idea also appears in McKean [63] and Bourgain [11] in the context of (deterministic) dispersive PDEs with random initial data, preceding [22]. See also Burq–Tzvetkov [14].

(ii) While Ψ is not a function, it turns out that the residual part v is a function of positive regularity. Namely, the decomposition (1.5) shows that the solution u “behaves like” the stochastic convolution in the high-frequency regime (or equivalently on small scales).

For our problem on the three-dimensional torus \mathbb{T}^3 , the Da Prato–Debussche trick does not suffice. Indeed, the stochastic convolution Ψ is less regular in three dimensions: $\Psi \in C(\mathbb{R}_+; W^{-\frac{1}{2}-\varepsilon, \infty}(\mathbb{T}^3))$ almost surely for any $\varepsilon > 0$. See Lemma 3.1 below. This worse behavior also causes the higher Wick powers $:\Psi^k:$ of Ψ to become less and less regular. Correspondingly, the Cauchy problem with higher powers of the nonlinear term become more and more difficult to study. This is the reason that, in this paper, we limit ourselves to the first non-trivial situation, namely the case $k = 2$ which is already not amenable to be harnessed by the Da Prato–Debussche trick. The main difficulty here is the lack of sufficient regularity for the residual term v in order for the product $\Psi \cdot v$ to be well defined. In the next subsection, we will describe in detail the difficulty and the strategy to overcome this difficulty. In particular we will use ideas from the paracontrolled calculus introduced by the first author (with Imkeller and Perkowski) [34, 18] and rewrite the equation (1.1) in an appropriate form, where the residual term v is further decomposed and analyzed to expose other multilinear stochastic objects of the stochastic convolution Ψ which will be subsequently estimated via probabilistic methods (and via detailed analysis exploiting their multilinear dispersive structures).

For further reference, let us now describe the construction of Ψ in the three-dimensional setting. Let W denote a cylindrical Wiener process on $L^2(\mathbb{T}^3)$.² More precisely, by letting

$$e_n(x) = e^{in \cdot x}, \quad \Lambda = \bigcup_{j=0}^2 \mathbb{Z}^j \times \mathbb{Z}_+ \times \{0\}^{2-j}, \quad \text{and} \quad \Lambda_0 = \Lambda \cup \{(0, 0, 0)\}, \tag{1.7}$$

¹In fact, one may prove local well-posedness of (1.6) on \mathbb{T}^2 by Sobolev’s inequality, i.e. without the Strichartz estimates. See [37].

²By convention, we endow \mathbb{T}^3 with the normalized Lebesgue measure $(2\pi)^{-3}dx$.

we have³

$$\begin{aligned} W(t) &= \sum_{n \in \mathbb{Z}^3} \beta_n(t) e_n \\ &= \beta_0(t) e_0 + \sum_{n \in \Lambda} \left[\sqrt{2} \operatorname{Re}(\beta_n(t)) \cdot \sqrt{2} \cos(n \cdot x) \right. \\ &\quad \left. - \sqrt{2} \operatorname{Im}(\beta_n(t)) \cdot \sqrt{2} \sin(n \cdot x) \right], \end{aligned} \quad (1.8)$$

where $\{\beta_n\}_{n \in \Lambda_0}$ is a family of mutually independent complex-valued Brownian motions⁴ on a fixed probability space (Ω, \mathcal{F}, P) and $\beta_{-n} := \overline{\beta_n}$ for $n \in \Lambda_0$. It is easy to see that W almost surely lies in $C^\alpha(\mathbb{R}_+; W^{-\frac{3}{2}-\varepsilon, \infty}(\mathbb{T}^3))$ for any $\alpha < \frac{1}{2}$ and $\varepsilon > 0$. We then define the stochastic convolution Ψ in the three-dimensional setting by

$$\Psi(t) := \mathcal{I}\xi(t) = \sum_{n \in \mathbb{Z}^3} e_n \int_0^t \frac{\sin((t-t')\langle n \rangle)}{\langle n \rangle} d\beta_n(t'). \quad (1.9)$$

See Lemma 3.1 below. for the regularity property of Ψ .

1.3. The paracontrolled approach. In the field of stochastic parabolic PDEs, there has been a significant progress over the last five years. In [41], Hairer introduced the theory of regularity structures and gave a precise meaning to certain (subcritical) singular stochastic parabolic PDEs, which are classically ill-posed. In particular, he showed that the stochastic quantization equation (SQE) on \mathbb{T}^3 :

$$\partial_t u - \Delta u = -u^3 + \infty \cdot u + \xi \quad (1.10)$$

is locally well-posed in an appropriate sense.

In [18], Catellier and Chouk proved an analogous local well-posedness result of SQE (1.10) via the paracontrolled calculus approach of Imkeller, Perkowski, and the first author [34]. This result was extended to global well-posedness on the torus (with a uniform-in-time bound) in a recent work [65] by Mourrat and Weber. More recently, Hofmanová and the first author [35] proved global existence of unique solutions to (1.11) on the Euclidean space \mathbb{R}^3 .

In [41, 18], the “solution” u to (1.10) is constructed as a unique limit of the following smoothed equation:

$$\partial_t u_\delta - \Delta u_\delta = -u_\delta^3 + C_\delta u_\delta + \xi_\delta, \quad (1.11)$$

where $\xi_\delta = \rho_\delta * \xi$ denotes the smoothed noise by a mollifier ρ_δ .⁵ Here, the uniqueness refers to the following; while the diverging constant C_δ depends on the choice of the mollifier ρ_δ , the limit u is independent of the choice of the mollifier. As it is written, one may wonder if u actually solves any equation in the end. In fact, one can introduce a decomposition of u analogous to (1.5) such that the residual terms satisfy a system of PDEs in the pathwise sense.

³Note that $\{e_0, \sqrt{2} \cos(n \cdot x), \sqrt{2} \sin(n \cdot x) : n \in \Lambda\}$ forms an orthonormal basis of $L^2(\mathbb{T}^3)$ (endowed with the normalized Lebesgue measure) in the real-valued setting.

⁴Here, we take β_0 to be real-valued. Moreover, we normalized β_n such that $\operatorname{Var}(\beta_n(t)) = t$. In particular, we have $\operatorname{Var}(\operatorname{Re} \beta_n(t)) = \operatorname{Var}(\operatorname{Im} \beta_n(t)) = \frac{t}{2}$ for $n \neq 0$.

⁵In [41], the mollifier ρ_δ is on both spatial and temporal variables, while it is only on spatial variables in [18]. In [57], the author employs a different kind of regularization.

In the following, we briefly describe this decomposition of u in the paracontrolled setting. For this purpose, let us define the stochastic convolution \mathfrak{r} by

$$\mathfrak{r} = (\partial_t - \Delta)^{-1} \xi.$$

Here, we adopted Hairer’s convention to denote the stochastic terms by trees; the vertex “ \cdot ” in \mathfrak{r} corresponds to the space-time white noise ξ , while the edge denotes the Duhamel integral operator $(\partial_t - \Delta)^{-1}$. On \mathbb{T}^3 , \mathfrak{r} has spatial regularity⁶ $-\frac{1}{2}-$ and hence its powers do not make sense. Denoting the renormalized cubic power “ \mathfrak{r}^3 ” by \mathfrak{v} ,⁷ we define

$$\mathfrak{Y} = (\partial_t - \Delta)^{-1} \mathfrak{v}. \tag{1.12}$$

Thanks to the parabolic smoothing of degree 2, it can be seen that \mathfrak{Y} has the regularity $\frac{1}{2}- = 3(-\frac{1}{2}-) + 2$. See for example [66]. We now write u as

$$u = \mathfrak{r} - \mathfrak{Y} + v, \tag{1.13}$$

where v is expected to be smoother than \mathfrak{Y} . As mentioned in Remark 1.4, the decomposition $u = \mathfrak{r} + v$ in the Da Prato–Debussche trick postulates u behaves like \mathfrak{r} on small scales. This new decomposition (1.13) postulates that the second order fluctuation of u is given by $-\mathfrak{Y}$. By further splitting v as $v = X + Y$ and introducing more stochastic objects (corresponding to Step (i) in Figure 1), one arrives at a system of PDEs for X and Y .⁸ Note that the stochastic objects thus introduced satisfy certain regularity properties in an almost sure manner. Hence, by simply viewing them as given deterministic data, we solve the resulting system for X and Y in a purely *deterministic* manner (Step (ii) in Figure 1).

$$(u_0, \xi) \xrightarrow{(i)} \underbrace{(u_0, \mathfrak{r}, \mathfrak{v}, \mathfrak{Y}, \mathfrak{v}^2, \mathfrak{v}^3, \mathfrak{v}^4)}_{\text{enhanced data set}} \xrightarrow{(ii)} (X, Y) \longmapsto u = \mathfrak{r} - \mathfrak{Y} + X + Y$$

FIGURE 1. The decomposition of the ill-posed solution map: $(u_0, \xi) \mapsto u$ into two steps (i) a canonical lift, generating an enhanced data set, and (ii) a deterministic continuous solution map called the Ito-Lyons map. Note that stochastic analysis is needed only in Step (i).

It is in this sense (with (1.13)) that u satisfies the limiting equation (1.10).⁹ See a nice exposition in the introduction of [65]. In [41], a similar decomposition of u holds at the level of regularity structures adapted to (1.10).

In the following, we describe a procedure based on a paracontrolled ansatz. This transforms (1.1) into a system of PDEs, which we can solve by standard deterministic tools.

⁶Hereafter, we use $a-$ (and $a+$) to denote $a - \varepsilon$ (and $a + \varepsilon$, respectively) for arbitrarily small $\varepsilon > 0$. If this notation appears in an estimate, then an implicit constant is allowed to depend on $\varepsilon > 0$ (and it usually diverges as $\varepsilon \rightarrow 0$).

⁷In the three-dimensional case, it is known that the “renormalized” cubic power \mathfrak{v} does not quite make sense as a distribution due to a logarithmic divergence. Note, however, that \mathfrak{Y} defined in (1.12) is a well defined function.

⁸Here, we are oversimplifying the argument. In fact, this decomposition $v = X + Y$ is based on a paracontrolled ansatz, postulating that $(\partial_t - \Delta)v$ is *paracontrolled* by \mathfrak{v} . See [18, 65] for further details. We will describe details of this step in studying SNLW. See (1.24) and (1.25)

⁹The term $\infty \cdot u$ in (1.10) is introduced so that all the terms appearing in the system for X and Y are finite. Here, ∞ is interpreted as a limit of the diverging constant C_δ in (1.11), which depends on the choice of a mollifier ρ_δ (but the limiting distribution u is independent of the choice of the mollifier). See also Remark 1.14 below.

Remark 1.5. The theory of regularity structures introduced by Hairer [41] provides a more complete framework to study singular parabolic equations than the paracontrolled calculus introduced in [34]. However, the theory of regularity structures is more rigid and we do not know how to handle stochastic wave equations in high dimensions at this point. In particular, we don't know how to lift the Duhamel integral operator \mathcal{I} .

Moreover, in the parabolic setting, it is easy to predict a regularity of a product. In the theory of regularity structures, this provides an intuition of a resulting homogeneity of a product of two elements in a regularity structure.¹⁰ In the current dispersive setting, we need to exploit a multilinear smoothing property to calculate a regularity of a product of two functions (under the Duhamel integral operator) in a much more careful manner. Hence, any implementation of regularity structures to study dispersive PDEs also needs to incorporate this extra smoothing via an explicit product structure, which seems to be highly non-trivial.

We keep our discussion at a formal level and discuss spatial regularities (= differentiability) of various objects without worrying about precise spatial Sobolev spaces that they belong to. We also use the following “rules”:¹¹

- A product of functions of regularities s_1 and s_2 is defined if $s_1 + s_2 > 0$. When $s_1 > 0$ and $s_1 \geq s_2$, the resulting product has regularity s_2 .
- A product of stochastic objects (not depending on the unknown) is always well defined, possibly with a renormalization. The product of stochastic objects of regularities s_1 and s_2 has regularity $\min(s_1, s_2, s_1 + s_2)$.

As in the case of SQE (1.10), we use \dagger to denote the stochastic convolution Ψ for the wave equation defined in (1.9):

$$\dagger := \Psi = \mathcal{I}(\xi) = \int_0^t \frac{\sin((t-t')\langle \nabla \rangle)}{\langle \nabla \rangle} dW(t'). \quad (1.14)$$

In this context, the vertex “ \cdot ” in \dagger corresponds to the space-time white noise ξ , while the edge denotes the Duhamel integral operator \mathcal{I} . Recalling that the spatial regularity $-\frac{3}{2}-$ of the space-time white noise ξ , the smoothing under \mathcal{I} shows that \dagger has (spatial) regularity $-\frac{1}{2}-$. See Lemma 3.1.

Next, we define the second order stochastic term Υ by

$$\Upsilon := \mathcal{I}(\mathfrak{v}) = \int_0^t \frac{\sin((t-t')\langle \nabla \rangle)}{\langle \nabla \rangle} \mathfrak{v}(t') dt', \quad (1.15)$$

where \mathfrak{v} is the renormalized version of \dagger^2 ; see Proposition 2.1 in [36] and Lemma 3.1 below. This corresponds to the second term in the Picard iteration scheme for (1.1) (with the zero initial data). Note that the Wick power \mathfrak{v} has regularity $-1- = 2(-\frac{1}{2}-)$. If one proceeds with a “parabolic thinking”,¹² then one might expect that Υ has regularity

$$0- = 2\left(-\frac{1}{2}-\right) + 1, \quad (1.16)$$

¹⁰More precisely, a product of elements in a model space T of a given regularity structure (A, T, G) .

¹¹In the remaining part of the paper, we will justify these rules.

¹²Namely, if we only count the regularity of each of \dagger in \mathfrak{v} and put them together with one degree of smoothing from the Duhamel integral operator \mathcal{I} *without* taking into account the product structure and the oscillatory nature of the linear wave propagator.

where we gain one derivative from the Duhamel integral operator \mathcal{I} , in particular from $\langle \nabla \rangle^{-1}$ in (1.15). In fact, we exhibit an extra $\frac{1}{2}$ -smoothing for \mathfrak{Y} by exploiting the explicit product structure and multilinear dispersion in (1.15).

Before proceeding further, let us introduce some notations. Given $N \in \mathbb{N}$, we define the (spatial) frequency projector π_N by

$$\pi_N u := \sum_{|n| \leq N} \widehat{u}(n) e_n. \quad (1.17)$$

We then define the truncated stochastic terms \mathfrak{I}_N and \mathfrak{Y}_N by

$$\mathfrak{I}_N := \pi_N \mathfrak{I} \quad \text{and} \quad \mathfrak{Y}_N := \mathcal{I}(\mathfrak{V}_N), \quad (1.18)$$

where \mathfrak{V}_N is the Wick power defined by

$$\mathfrak{V}_N := (\mathfrak{I}_N)^2 - \sigma_N \quad (1.19)$$

with¹³

$$\begin{aligned} \sigma_N(t) &= \mathbb{E}[(\mathfrak{I}_N(x, t))^2] = \sum_{|n| \leq N} \int_0^t \left[\frac{\sin((t-t')\langle n \rangle)}{\langle n \rangle} \right]^2 dt' \\ &= \sum_{|n| \leq N} \left\{ \frac{t}{2\langle n \rangle^2} - \frac{\sin(2t\langle n \rangle)}{4\langle n \rangle^3} \right\} \sim tN. \end{aligned} \quad (1.20)$$

Note that we have $\mathfrak{V} = \lim_{N \rightarrow \infty} \mathfrak{V}_N$ in $C([0, T]; W^{-1-\varepsilon, \infty}(\mathbb{T}^3))$ almost surely. See Lemma 3.1 below.

Proposition 1.6. *Let $T > 0$. Then, \mathfrak{Y}_N converges to \mathfrak{Y} in $C([0, T]; W^{\frac{1}{2}-\varepsilon, \infty}(\mathbb{T}^3)) \cap C^1([0, T]; W^{-1-\varepsilon, \infty}(\mathbb{T}^3))$ almost surely for any $\varepsilon > 0$. In particular, we have*

$$\mathfrak{Y} \in C([0, T]; W^{\frac{1}{2}-\varepsilon, \infty}(\mathbb{T}^3)) \cap C^1([0, T]; W^{-1-\varepsilon, \infty}(\mathbb{T}^3))$$

almost surely for any $\varepsilon > 0$.

This proposition shows an extra $\frac{1}{2}$ -smoothing for \mathfrak{Y} as compared to (1.16). This extra smoothing results from a multilinear interaction of waves and is a manifestation of *dispersion* (at a multilinear level), which is a key difference between dispersive and parabolic equations. In proving Proposition 1.6, we combine stochastic tools with multilinear dispersive analysis, in particular, carefully estimating the (nearly) time resonant and time non-resonant contributions. See Remark 3.3. In the following, we will exploit the dispersive nature of our problem in a crucial manner.

We now write u as

$$u = \mathfrak{I} - \mathfrak{Y} + v. \quad (1.21)$$

Then, it follows from (1.1) and (1.21) that v satisfies

$$\begin{aligned} (\partial_t^2 + 1 - \Delta)v &= -(v + \mathfrak{I} - \mathfrak{Y})^2 + \mathfrak{V} \\ &= -(v - \mathfrak{Y})^2 - 2v\mathfrak{I} + 2\mathfrak{I}\mathfrak{Y}. \end{aligned}$$

At the second equality, we performed the Wick renormalization: $\mathfrak{I}^2 \rightsquigarrow \mathfrak{V}$. The last term $\mathfrak{I}\mathfrak{Y}$ has regularity $-\frac{1}{2}-$, inheriting the worse regularity of \mathfrak{I} . Hence, we expect v to have regularity at most $\frac{1}{2}- = (-\frac{1}{2}-) + 1$. In particular, the product $v\mathfrak{I}$ is not well defined since $(\frac{1}{2}-) + (-\frac{1}{2}-) < 0$.

¹³In our spatially homogeneous setting, the variance $\sigma_N(t)$ is independent of $x \in \mathbb{T}^3$.

In order to overcome this problem, we proceed with the paracontrolled calculus. The main ingredients for the paracontrolled approach in the parabolic setting are (i) a paracontrolled ansatz and (ii) commutator estimates. For the wave equation, however, there seems to be no smoothing for a certain relevant commutator (Remark 1.16) and we need to introduce an alternative argument.

Let us first recall the definition and basic properties of paraproducts introduced by Bony [10]. See Section 2 and [3, 34] for further details. Given $j \in \mathbb{N} \cup \{0\}$, let \mathbf{P}_j be the (non-homogeneous) Littlewood-Paley projector onto the (spatial) frequencies $\{n \in \mathbb{Z}^3 : |n| \sim 2^j\}$ such that

$$f = \sum_{j=0}^{\infty} \mathbf{P}_j f.$$

Given two functions f and g on \mathbb{T}^3 of regularities s_1 and s_2 , we write the product fg as

$$\begin{aligned} fg &= f \otimes g + f \circledast g + f \circledast g \\ &:= \sum_{j < k-2} \mathbf{P}_j f \mathbf{P}_k g + \sum_{|j-k| \leq 2} \mathbf{P}_j f \mathbf{P}_k g + \sum_{k < j-2} \mathbf{P}_j f \mathbf{P}_k g. \end{aligned} \quad (1.22)$$

The first term $f \otimes g$ (and the third term $f \circledast g$) is called the paraproduct of g by f (the paraproduct of f by g , respectively) and it is always well defined as a distribution of regularity $\min(s_2, s_1 + s_2)$. On the other hand, the resonant product $f \circledast g$ is well defined in general only if $s_1 + s_2 > 0$. In the following, we also use the notation $f \circledast g := f \otimes g + f \circledast g$.

As in the study of SQE on \mathbb{T}^3 , we now introduce our paracontrolled ansatz. Namely, we suppose that $v = u - \mathfrak{t} + \Upsilon$ can be decomposed as

$$v = X + Y, \quad (1.23)$$

where X and Y satisfy

$$(\partial_t^2 + 1 - \Delta)X = -2(X + Y - \Upsilon) \circledast \mathfrak{t}, \quad (1.24)$$

$$(\partial_t^2 + 1 - \Delta)Y = -(X + Y - \Upsilon)^2 - 2(X + Y - \Upsilon) \circledast \mathfrak{t}. \quad (1.25)$$

Furthermore, we postulate that both X and Y have positive regularities s_1 and s_2 , respectively, with $0 < s_1 < s_2$.

Remark 1.7. We say that a distribution f is paracontrolled (by a given distribution g) if there exists f' such that

$$f = f' \circledast g + h$$

where h is a ‘‘smoother’’ remainder. See Definition 3.6 in [34] for a precise definition. Note, however, that the definition in [34] is given in terms of the Besov-Hölder spaces $\mathcal{C}^s = B_{\infty, \infty}^s$ and is not necessarily useful for our dispersive problem. Formally speaking, via the decomposition (1.23) with (1.24) and the regularity assumption $0 < s_1 < s_2$, we are postulating $(\partial_t^2 + 1 - \Delta)v$ is paracontrolled by \mathfrak{t} .

From the first equation (1.24), we see that X has regularity $\frac{1}{2}- = (-\frac{1}{2}-) + 1$. For now, let us ignore the resonant product $-2(X + Y - \Upsilon) \circledast \mathfrak{t}$ in (1.25) and discuss the regularity of Y . Recalling that Υ has regularity $\frac{1}{2}-$, we see that the paraproduct $-2(X + Y - \Upsilon) \circledast \mathfrak{t}$ (with regularity $0-$) as well as $-(X + Y - \Upsilon)^2$ in (1.25) hints that Y would have regularity $1- = (0-) + 1$. This is of course provided that we can give a meaning to the resonant product $-2(X + Y - \Upsilon) \circledast \mathfrak{t}$. By postulating that Y has regularity at least $\frac{1}{2} + \varepsilon$ for some $\varepsilon > 0$, we see that the resonant

product $Y \circledast \dagger$ makes sense as a distribution of regularity $s_2 + (-\frac{1}{2}-) > 0$ without any problem. Furthermore, we can make sense of the following resonant product:

$$\mathfrak{Y} := \Upsilon \circledast \dagger \quad (1.26)$$

as a distribution of regularity $0- = (\frac{1}{2}-) + (-\frac{1}{2}-)$ (without renormalization).

Proposition 1.8. *Let $T > 0$. Then, $\mathfrak{Y}_N := \Upsilon_N \circledast \dagger_N$ converges to \mathfrak{Y} in $C([0, T]; W^{-\varepsilon, \infty}(\mathbb{T}^3))$ almost surely for any $\varepsilon > 0$. In particular, we have*

$$\mathfrak{Y} \in C([0, T]; W^{-\varepsilon, \infty}(\mathbb{T}^3))$$

almost surely for any $\varepsilon > 0$.

If one simply writes out \mathfrak{Y} , then there seems to be a logarithmically divergent contribution (see (4.3)). We can, however, exploit dispersion at a multilinear level as in Proposition 1.6 and show that \mathfrak{Y} is indeed a well defined distribution.

Hence, it remains to give a meaning to the resonant product $X \circledast \dagger$. Writing the equation (1.24) in the Duhamel formulation, we have

$$X = S(t)(X_0, X_1) - 2\mathcal{I}((X + Y - \Upsilon) \circledast \dagger), \quad (1.27)$$

where $(X, \partial_t X)|_{t=0} = (X_0, X_1) \in \mathcal{H}^{s_1}(\mathbb{T}^3)$ and $S(t)$ is the propagator for the linear wave equation defined by

$$S(t)(u_0, u_1) := \cos(t\langle \nabla \rangle)u_0 + \frac{\sin(t\langle \nabla \rangle)}{\langle \nabla \rangle}u_1.$$

We need to make sense of the resonant product between \dagger and each of the terms on the right-hand side of (1.27). The next lemma establishes a regularity property of the resonant product:

$$Z = Z(X_0, X_1) := (S(t)(X_0, X_1)) \circledast \dagger.$$

Lemma 1.9. *Given $s_1 > 0$, let $(X_0, X_1) \in \mathcal{H}^{s_1}(\mathbb{T}^3)$. Then, given $T > 0$ and $\varepsilon > 0$,*

$$Z_N := (S(t)(X_0, X_1)) \circledast \dagger_N$$

converges to $Z = (S(t)(X_0, X_1)) \circledast \dagger$ in $C([0, T]; H^{s_1 - \frac{1}{2} - \varepsilon}(\mathbb{T}^3))$ almost surely. In particular, we have

$$Z = (S(t)(X_0, X_1)) \circledast \dagger \in C([0, T]; H^{s_1 - \frac{1}{2} - \varepsilon}(\mathbb{T}^3))$$

almost surely for any $\varepsilon > 0$.

See Section 5 for the proof.

Remark 1.10. While the proof of Lemma 1.9 is a straightforward application of the Wiener chaos estimate (Lemma 2.5), we point out that the set of probability one on which the conclusion of Lemma 1.9 holds depends on the choice of deterministic initial data $(X_0, X_1) \in \mathcal{H}^{s_1}(\mathbb{T}^3)$. This is analogous to the situation for the recent study of nonlinear dispersive PDEs with randomized initial data [14, 15, 60, 7, 80, 73, 74, 8], where a set of probability one for local-in-time or global-in-time well-posedness depends on the choice of deterministic initial data (to which a randomization is applied). See [15] for a further discussion.

The main difficulty arises in making sense of the resonant product of the second term on the right-hand side of (1.27) and \dagger . In the parabolic setting, it is at this step where one would introduce commutators in (1.27) and exploit their smoothing properties. For our dispersive problem, however, such an argument does not seem to work. See Remark 1.16 below. This is where our discussion diverges from the parabolic case.

The main idea is to study the following *paracontrolled operator* \mathfrak{J}_\otimes and exhibit some smoothing property. Given a function $w \in C(\mathbb{R}_+; H^{s_1}(\mathbb{T}^3))$ with $0 < s_1 < \frac{1}{2}$, define

$$\begin{aligned} \mathfrak{J}_\otimes(w)(t) &:= \mathcal{I}(w \otimes \dagger)(t) = \sum_{j < k-2} \mathcal{I}(\mathbf{P}_j w \cdot \mathbf{P}_k \dagger) \\ &= \sum_{n \in \mathbb{Z}^3} e_n \sum_{\substack{n=n_1+n_2 \\ |n_1| \ll |n_2|}} \int_0^t \frac{\sin((t-t')\langle n \rangle)}{\langle n \rangle} \widehat{w}(n_1, t') \widehat{\dagger}(n_2, t') dt'. \end{aligned} \quad (1.28)$$

Here, $|n_1| \ll |n_2|$ signifies the paraproduct \otimes in the definition of \mathfrak{J}_\otimes .¹⁴ In the following, we decompose the paracontrolled operator \mathfrak{J}_\otimes into two pieces and study them separately.

Fix small $\theta > 0$. Denoting by n_1 and n_2 the spatial frequencies of w and \dagger as in (1.28), we further define $\mathfrak{J}_\otimes^{(1)}$ and $\mathfrak{J}_\otimes^{(2)}$ as the restrictions of \mathfrak{J}_\otimes onto $\{|n_1| \gtrsim |n_2|^\theta\}$ and $\{|n_1| \ll |n_2|^\theta\}$. More concretely, we set

$$\mathfrak{J}_\otimes^{(1)}(w)(t) := \sum_{n \in \mathbb{Z}^3} e_n \sum_{\substack{n=n_1+n_2 \\ |n_2|^\theta \lesssim |n_1| \ll |n_2|}} \int_0^t \frac{\sin((t-t')\langle n \rangle)}{\langle n \rangle} \widehat{w}(n_1, t') \widehat{\dagger}(n_2, t') dt' \quad (1.29)$$

and $\mathfrak{J}_\otimes^{(2)}(w) := \mathfrak{J}_\otimes(w) - \mathfrak{J}_\otimes^{(1)}(w)$. As for the first paracontrolled operator $\mathfrak{J}_\otimes^{(1)}$, thanks to the lower bound $|n_1| \gtrsim |n_2|^\theta$ and the positive regularity of w , we exhibit some smoothing property such that the resonant product $\mathfrak{J}_\otimes^{(1)}(X + Y + \Upsilon) \otimes \dagger$ is well defined. See Lemma 5.1 and Corollary 5.2.

Next, we discuss the second paracontrolled operator $\mathfrak{J}_\otimes^{(2)}$. Our goal is to make sense of the resonant product $\mathfrak{J}_\otimes^{(2)}(w) \otimes \dagger$ for w with spatial regularity $\frac{1}{2}-$. Unlike $\mathfrak{J}_\otimes^{(1)}$, the operator $\mathfrak{J}_\otimes^{(2)}$ does not seem to possess a smoothing property and thus we need to directly study the operator $\mathfrak{J}_{\otimes, \ominus}$ defined by

$$\begin{aligned} \mathfrak{J}_{\otimes, \ominus}(w)(t) &:= \mathfrak{J}_\otimes^{(2)}(w) \otimes \dagger(t) \\ &= \sum_{n \in \mathbb{Z}^3} e_n \int_0^t \sum_{n_1 \in \mathbb{Z}^3} \widehat{w}(n_1, t') \mathcal{A}_{n, n_1}(t, t') dt', \end{aligned} \quad (1.30)$$

where $\mathcal{A}_{n, n_1}(t, t')$ is given by

$$\mathcal{A}_{n, n_1}(t, t') = \mathbf{1}_{[0, t]}(t') \sum_{\substack{n-n_1=n_2+n_3 \\ |n_1| \ll |n_2|^\theta \\ |n_1+n_2| \sim |n_3|}} \frac{\sin((t-t')\langle n_1+n_2 \rangle)}{\langle n_1+n_2 \rangle} \widehat{\dagger}(n_2, t') \widehat{\dagger}(n_3, t). \quad (1.31)$$

Here, the condition $|n_1+n_2| \sim |n_3|$ is used to denote the spectral multiplier corresponding to the resonant product \ominus in (1.30). See (5.7) for a more precise definition.

¹⁴For simplicity of the presentation, we use the less precise definitions of paracontrolled operators in the remaining part of this introduction. See (5.2), (5.6), and (5.7) for the precise definitions of the paracontrolled operators $\mathfrak{J}_\otimes^{(1)}$ and $\mathfrak{J}_{\otimes, \ominus}$.

Given $n \in \mathbb{Z}^3$ and $0 \leq t_2 \leq t_1$, define $\sigma_n(t_1, t_2)$ by

$$\begin{aligned} \sigma_n(t_1, t_2) &:= \mathbb{E}[\widehat{\mathfrak{I}}(n, t_1)\widehat{\mathfrak{I}}(-n, t_2)] = \int_0^{t_2} \frac{\sin((t_1 - t')\langle n \rangle)}{\langle n \rangle} \frac{\sin((t_2 - t')\langle n \rangle)}{\langle n \rangle} dt' \\ &= \frac{\cos((t_1 - t_2)\langle n \rangle)}{2\langle n \rangle^2} t_2 + \frac{\sin((t_1 - t_2)\langle n \rangle)}{4\langle n \rangle^3} - \frac{\sin((t_1 + t_2)\langle n \rangle)}{4\langle n \rangle^3}. \end{aligned} \quad (1.32)$$

Recall from the definition (1.14) (also see (1.9)) that $\widehat{\mathfrak{I}}(n_2, t')$ and $\widehat{\mathfrak{I}}(n_3, t)$ are uncorrelated unless $n_2 + n_3 = 0$, i.e. $n = n_1$. This leads to the following decomposition of \mathcal{A}_{n, n_1} :

$$\begin{aligned} \mathcal{A}_{n, n_1}(t, t') &= \mathbf{1}_{[0, t]}(t') \sum_{\substack{n - n_1 = n_2 + n_3 \\ |n_1| \ll |n_2|^\theta \\ |n_1 + n_2| \sim |n_3|}} \frac{\sin((t - t')\langle n_1 + n_2 \rangle)}{\langle n_1 + n_2 \rangle} \\ &\quad \times (\widehat{\mathfrak{I}}(n_2, t')\widehat{\mathfrak{I}}(n_3, t) - \mathbf{1}_{n_2 + n_3 = 0} \cdot \sigma_{n_2}(t, t')) \\ &\quad + \mathbf{1}_{[0, t]}(t') \cdot \mathbf{1}_{n = n_1} \cdot \sum_{\substack{n_2 \in \mathbb{Z}^3 \\ |n| \ll |n_2|^\theta}} \frac{\sin((t - t')\langle n + n_2 \rangle)}{\langle n + n_2 \rangle} \sigma_{n_2}(t, t') \\ &=: \mathcal{A}_{n, n_1}^{(1)}(t, t') + \mathcal{A}_{n, n_1}^{(2)}(t, t'). \end{aligned} \quad (1.33)$$

The second term $\mathcal{A}_{n, n_1}^{(2)}$ is a (deterministic) ‘‘counter term’’ for the contribution in (1.31) from $n_2 + n_3 = 0$. For this term, the condition $|n_1 + n_2| \sim |n_3|$ reduces to $|n + n_2| \sim |n_2|$ which is automatically satisfied under $|n| \ll |n_2|^\theta$ for small $\theta > 0$. See (4.11) and (4.12) below.

In view of (1.32), the sum in n_2 for the second term $\mathcal{A}_{n, n_1}^{(2)}$ is not absolutely convergent. Nonetheless, by exploiting dispersion, we show the following boundedness property of the paracontrolled operator $\mathfrak{J}_{\otimes, \otimes}$ defined in (1.30). Given Banach spaces B_1 and B_2 , we use $\mathcal{L}(B_1; B_2)$ to denote the space of bounded linear operators from B_1 to B_2 .

Proposition 1.11. *Let $s_2 < 1$ and $T > 0$. Then, there exists small $\theta = \theta(s_2) > 0$ and $\varepsilon > 0$ such that the paracontrolled operator $\mathfrak{J}_{\otimes, \otimes}$ defined in (1.30) belongs to the class:*

$$\mathcal{L}_1 = \mathcal{L}(C([0, T]; L^2(\mathbb{T}^3)) \cap C^1([0, T]; H^{-1-\varepsilon}(\mathbb{T}^3)); C([0, T]; H^{s_2-1}(\mathbb{T}^3))), \quad (1.34)$$

almost surely. Moreover, if we define the paracontrolled operator $\mathfrak{J}_{\otimes, \otimes}^N$, $N \in \mathbb{N}$, by replacing \mathfrak{I} in (1.30) and (1.31) with the truncated stochastic convolution \mathfrak{I}_N in (1.18), then the truncated paracontrolled operators $\mathfrak{J}_{\otimes, \otimes}^N$ converge almost surely to $\mathfrak{J}_{\otimes, \otimes}$ in \mathcal{L}_1 .

As in the proofs of Propositions 1.6 and 1.8, dispersion plays an essential role in establishing the regularity property of the paracontrolled operator $\mathfrak{J}_{\otimes, \otimes}$. See Section 5 for the proof.

Putting all together, we obtain the following system of PDEs for X and Y :

$$\begin{aligned} (\partial_t^2 + 1 - \Delta)X &= -2(X + Y - \Upsilon) \otimes \mathfrak{I}, \\ (\partial_t^2 + 1 - \Delta)Y &= -(X + Y - \Upsilon)^2 - 2(X + Y - \Upsilon) \otimes \mathfrak{I} \\ &\quad - 2Y \otimes \mathfrak{I} + 2\Upsilon \mathfrak{I} - 2Z \\ &\quad + 4\mathfrak{J}_{\otimes}^{(1)}(X + Y - \Upsilon) \otimes \mathfrak{I} + 4\mathfrak{J}_{\otimes, \otimes}(X + Y - \Upsilon), \\ (X, \partial_t X, Y, \partial_t Y)|_{t=0} &= (X_0, X_1, Y_0, Y_1). \end{aligned} \quad (1.35)$$

Let $s_1 < \frac{1}{2}$ and fix a pair of deterministic functions (X_0, X_1) in $\mathcal{H}^{s_1}(\mathbb{T}^3)$. The stochastic terms and operator appearing in the system (1.35) are

$$\mathfrak{t}, \quad \Upsilon, \quad \mathfrak{Y}, \quad Z = Z(X_0, X_1), \quad \text{and} \quad \mathfrak{J}_{\otimes, \ominus}, \quad (1.36)$$

In Lemma 3.1 and Propositions 1.6 and 1.8, we study the regularity properties of \mathfrak{t} , Υ , and \mathfrak{Y} , and show that each of these terms belongs almost surely to $C(\mathbb{R}_+; W^{s, \infty}(\mathbb{T}^3))$ with the regularity s shown in Table 1. In Lemma 1.9, we prove that $Z \in C(\mathbb{R}_+; H^s(\mathbb{T}^3))$ almost surely for $s < s_1 - \frac{1}{2}$. In Proposition 1.11, we establish the almost sure boundedness property of the paracontrolled operator $\mathfrak{J}_{\otimes, \ominus}$ in an appropriate space. We summarize these regularity properties in Table 1.

	\mathfrak{t}	Υ	\mathfrak{Y}	Z	$\mathfrak{J}_{\otimes, \ominus}$
s	$-\frac{1}{2} - \varepsilon$	$\frac{1}{2} - \varepsilon$	$-\varepsilon$	$s_1 - \frac{1}{2} - \varepsilon$	\mathcal{L}_1 in (1.34)

TABLE 1. The list of relevant stochastic terms with their regularities

In Lemma 5.1 and Corollary 5.2, we also study the regularity property of the paracontrolled operator $\mathfrak{J}_{\otimes}^{(1)}$.

We now state our main result on local well-posedness of the system (1.35), viewing the terms and operators in (1.36) as *predefined deterministic* data with certain regularity properties.

Theorem 1.12. *Let $\frac{1}{4} < s_1 < \frac{1}{2} < s_2 \leq s_1 + \frac{1}{4}$. There exist small $\theta = \theta(s_2) > 0$ and $\varepsilon = \varepsilon(s_1, s_2, \theta) > 0$ such that if*

- \mathfrak{t} , Υ , and \mathfrak{Y} , are distributions belonging to $C(\mathbb{R}_+; W^{s, \infty}(\mathbb{T}^3))$ for s as in Table 1. Moreover, we assume that

$$\Upsilon \in C^1(\mathbb{R}_+; W^{-1-\varepsilon, \infty}(\mathbb{T}^3)),$$

- Z is a distribution belonging to $C(\mathbb{R}_+; H^{s_1 - \frac{1}{2} - \varepsilon}(\mathbb{T}^3))$,
- the operator $\mathfrak{J}_{\otimes, \ominus}$ belongs to the class \mathcal{L}_1 in (1.34),

then the system (1.35) is locally well-posed in $\mathcal{H}^{s_1}(\mathbb{T}^3) \times \mathcal{H}^{s_2}(\mathbb{T}^3)$. More precisely, given any $(X_0, X_1, Y_0, Y_1) \in \mathcal{H}^{s_1}(\mathbb{T}^3) \times \mathcal{H}^{s_2}(\mathbb{T}^3)$, there exists $T > 0$ such that there exists a unique solution (X, Y) to the system (1.35) on $[0, T]$ in the class

$$Z_T^{s_1, s_2} = X_T^{s_1} \times Y_T^{s_2} \subset C([0, T]; H^{s_1}(\mathbb{T}^3) \times H^{s_2}(\mathbb{T}^3)) \cap C^1([0, T]; H^{s_1-1}(\mathbb{T}^3) \times H^{s_2-1}(\mathbb{T}^3)),$$

depending continuously on the enhanced data set:

$$\Xi = (X_0, X_1, Y_0, Y_1, \mathfrak{t}, \Upsilon, \mathfrak{Y}, Z, \mathfrak{J}_{\otimes, \ominus}) \quad (1.37)$$

in the class:

$$\begin{aligned} \mathcal{X}_T^{s_1, s_2, \varepsilon} = & \mathcal{H}^{s_1}(\mathbb{T}^3) \times \mathcal{H}^{s_2}(\mathbb{T}^3) \times C([0, T]; W^{-\frac{1}{2}-\varepsilon, \infty}(\mathbb{T}^3)) \\ & \times (C([0, T]; W^{\frac{1}{2}-\varepsilon, \infty}(\mathbb{T}^3)) \cap C^1([0, T]; W^{-1-\varepsilon, \infty}(\mathbb{T}^3))) \\ & \times C([0, T]; W^{-\varepsilon, \infty}(\mathbb{T}^3)) \times C([0, T]; H^{s_1 - \frac{1}{2} - \varepsilon}(\mathbb{T}^3)) \times \mathcal{L}_1. \end{aligned} \quad (1.38)$$

Here, $X_T^{s_1}$ and $Y_T^{s_2}$ are the energy spaces at the regularities s_1 and s_2 intersected with appropriate Strichartz spaces. See (6.1) below.

Theorem 1.12 states local well-posedness of the system (1.35) when we view the enhanced data set $\mathfrak{t}, \mathfrak{Y}, \mathfrak{Y}_N, Z$, and $\mathfrak{J}_{\otimes, \ominus}$ as given deterministic distributions or operator. As such, the proof of Theorem 1.12 is entirely deterministic. By writing (1.35) in the Duhamel formulation

$$\begin{aligned}
X(t) &= \Phi_1(X, Y)(t) \\
&:= S(t)(X_0, X_1) - 2 \int_0^t \frac{\sin((t-t')\langle \nabla \rangle)}{\langle \nabla \rangle} [(X + Y - \mathfrak{Y}) \otimes \mathfrak{t}](t') dt', \\
Y(t) &= \Phi_2(X, Y)(t) \\
&:= S(t)(Y_0, Y_1) - \int_0^t \frac{\sin((t-t')\langle \nabla \rangle)}{\langle \nabla \rangle} \left[(X + Y - \mathfrak{Y})^2 + 2(X + Y - \mathfrak{Y}) \otimes \mathfrak{t} \right. \\
&\quad \left. + 2Y \otimes \mathfrak{t} - 2\mathfrak{Y}_N + 2Z \right. \\
&\quad \left. - 4\mathfrak{J}_{\otimes}^{(1)}(X + Y - \mathfrak{Y}) \otimes \mathfrak{t} - 4\mathfrak{J}_{\otimes, \ominus}(X + Y - \mathfrak{Y}) \right](t') dt',
\end{aligned} \tag{1.39}$$

we show that the map $\Phi = (\Phi_1, \Phi_2)$ is a contraction on a closed ball in $Z_T^{s_1, s_2}$ for sufficiently small $T > 0$ which depends only on the $\mathcal{X}_T^{s_1, s_2, \varepsilon}$ -norm of the enhanced data set Ξ in (1.37). The main tools are (i) the Strichartz estimates for the wave equations (Lemma 2.4) and (ii) the paraproduct estimates (Lemma 2.1). See Section 6 for details.

Finally, let us discuss the consequence of Theorem 1.12 on the original SNLW (1.1).

Proof of Theorem 1.1. Let $\frac{1}{4} < s < \frac{1}{2}$. Given $(u_0, u_1) \in \mathcal{H}^s(\mathbb{T}^3)$, let $(X_0, X_1, Y_0, Y_1) = (u_0, u_1, 0, 0)$. For each $N \in \mathbb{N}$, we construct the enhanced data set associated with the truncated noise $\xi_N = \pi_N \xi$:

$$\Xi_N = (u_0, u_1, 0, 0, \mathfrak{t}_N, \mathfrak{Y}_N, \mathfrak{Y}_N, Z_N, \mathfrak{J}_{\otimes, \ominus}^N).$$

Here, $\mathfrak{t}_N, \mathfrak{Y}_N, \mathfrak{Y}_N$, and $\mathfrak{J}_{\otimes, \ominus}^N$ are as in (1.18) and Propositions 1.8 and 1.11, while we set $Z_N = Z_N(u_0, u_1) = S(t)(u_0, u_1) \otimes \mathfrak{t}_N$. Let (X_N, Y_N) be the unique local-in-time solution to the system (1.35) with the enhanced data set Ξ_N and define u_N by

$$u_N = \mathfrak{t}_N - \mathfrak{Y}_N + X_N + Y_N. \tag{1.40}$$

Then, by reversing the discussion above with (1.19), we see that u_N satisfies the renormalized SNLW (1.2) *provided* σ_N is chosen as in (1.20).

From Lemma 3.1, Propositions 1.6, 1.8, Lemma 1.9, Corollary 5.2, and Proposition 1.11, we see that Ξ_N converges almost surely to

$$\Xi = (u_0, u_1, 0, 0, \mathfrak{t}, \mathfrak{Y}, \mathfrak{Y}, S(t)(u_0, u_1) \otimes \mathfrak{t}, \mathfrak{J}_{\otimes, \ominus}) \tag{1.41}$$

in the $\mathcal{X}_1^{s, \frac{1}{2} + \varepsilon, \varepsilon}$ -topology for some small $\varepsilon > 0$. Then, the (pathwise) continuous dependence of the solution map for the system (1.35) on the enhanced data set in $\mathcal{X}_1^{s, \frac{1}{2} + \varepsilon, \varepsilon}$ implies that

- the (random) local existence time $T = T(\omega)$ depicted in Theorem 1.12 can be chosen uniformly for $\{(X_N, Y_N)\}_{N \in \mathbb{N}}$ and (X, Y) . Here, (X, Y) is the unique solution to (1.35) with the enhanced data Ξ in (1.41).
- the solution u_N to the renormalized SNLW (1.2) defined in (1.40) converges almost surely to u in $C([0, T]; H^{-\frac{1}{2} - \varepsilon}(\mathbb{T}^3))$, where u is given by

$$u = \mathfrak{t} - \mathfrak{Y} + X + Y. \tag{1.42}$$

This proves Theorem 1.1 under the condition that σ_N is chosen as described in (1.20). \square

Remark 1.13. As we pointed out in Remark 1.10, the set Σ of probability one on which Theorem 1.1 holds depends on the choice of (deterministic) initial data $(u_0, u_1) \in \mathcal{H}^s(\mathbb{T}^3)$ due to Lemma 1.9. If we assume a slightly higher regularity, namely, if we work with $(u_0, u_1) \in \mathcal{H}^s(\mathbb{T}^3)$ for some $s > \frac{1}{2}$, we can choose the set Σ of probability one, independent of $(u_0, u_1) \in \mathcal{H}^s(\mathbb{T}^3)$, by simply setting $(X_0, X_1, Y_0, Y_1) = (0, 0, u_0, u_1)$, which avoids the use of Lemma 1.9.

Remark 1.14. Given $\rho \in L^1(\mathbb{R}^3)$ with $\int_{\mathbb{R}^3} \rho(x) dx = 1$ and $\text{supp } \rho \subset (-\frac{1}{2}, \frac{1}{2}]^3$, we define a smooth mollifier ρ_δ , $0 < \delta \leq 1$, by setting

$$\rho_\delta(x) = \delta^{-3} \rho(\delta^{-1}x).$$

We also say that such ρ is a mollification kernel. Then, the same argument leading to Theorem 1.1 can be used to prove the following convergence and uniqueness statement. See [41, 18]. Given $\frac{1}{4} < s < \frac{1}{2}$, let $(u_0, u_1) \in \mathcal{H}^s(\mathbb{T}^3)$. Let $\xi_\delta = \rho_\delta * \xi$ be the smoothed noise by a smooth mollifier ρ_δ . Then, for any $0 < \delta \leq 1$, there exists $C_\delta = C_\delta(t, \rho)$ such that the solution u_δ to the following smoothed SNLW:

$$\begin{cases} \partial_t^2 u_\delta + (1 - \Delta)u_\delta = -u_\delta^2 + C_\delta + \xi_\delta \\ (u_\delta, \partial_t u_\delta)|_{t=0} = (u_0, u_1) \end{cases}$$

converges in probability to some distribution u in $C([0, T]; H^{-\frac{1}{2}-\varepsilon}(\mathbb{T}^3))$ for any $\varepsilon > 0$, where $T = T(\omega)$ is an almost surely positive stopping time, independent of $0 < \delta \leq 1$. Here, we have $C_\delta(t, \rho) = C_0 \frac{t}{\delta} + C(t, \rho)$, where C_0 is a universal constant and $C(t, \rho)$ is a finite constant. Moreover, the limit u is unique in the sense that it is independent of the choice of the mollification kernel ρ .

Let us complete this section by some additional observations.

Remark 1.15. (i) In making sense of the resonant product $X \circledast \mathfrak{t}$, we substituted the Duhamel formula for X as in (1.27). This is analogous to the treatment of SQE (1.10); see [65]. Note that such an iteration of the (part of) Duhamel formula already appears in the study of the stochastic KdV equation with an additive (almost) white noise. See [33, 71].

(ii) Unlike the parabolic setting, we need to assume higher regularity for initial data than the stochastic convolution. This is due to the lack of smoothing in our dispersive problem. If initial data is random (independent of the additive space-time white noise), we may take it to be of low regularity.

(iii) In Proposition 1.11, we assumed one time differentiability of an input function for the paracontrolled operator $\mathfrak{J}_{\circledast, \circledast}$. This smoothness in time allows us to exploit the time oscillation by integration by parts. See (5.18) below. On the one hand, we may prove an analogous boundedness result by assuming less time regularity of an input function. On the other hand, it seems that we do need to assume some time regularity of an input function. This necessity for smoothness in time is analogous to the parabolic setting, but for a different reason in the parabolic setting; see [41, 18, 65].

Remark 1.16 (On commutators). As we mentioned above, commutators play an important role in applying the paracontrolled calculus in the parabolic setting. If we were to follow the argument for SQE presented in [65], then we would write (1.27) as

$$\begin{aligned} X &= S(t)(X_0, X_1) - 2\mathcal{I}((X + Y + \Upsilon) \circledast \mathfrak{t}) \\ &= S(t)(X_0, X_1) - 2(X + Y + \Upsilon) \circledast \mathcal{I}(\mathfrak{t}) + \text{com}_1. \end{aligned} \tag{1.43}$$

Here, the commutator com_1 denotes the commutator of the paraproduct \circledast and the Duhamel integral operator $\mathcal{I} = (\partial_t^2 + 1 - \Delta)^{-1}$.

In the case of SQE (1.10) on \mathbb{T}^3 , it was crucial that the commutator of the paraproduct \circledast and the Duhamel integral operator $(\partial_t - \Delta)^{-1}$ for the heat equation enjoyed some smoothing property, which resulted from the smoothing property of the commutator $[e^{t\Delta}, \circledast]$ between the linear heat semigroup $e^{t\Delta}$ and the paraproduct \circledast (see Lemma 2.5 in [18] and Proposition A.16 in [65]). Unfortunately, in our dispersive setting, the commutator com_1 does not seem to provide any smoothing. We point out that if the identity (1.43) were to hold with a smoother commutator, then the rest would follow as in the parabolic setting [65] (and in particular, there would no need to introduce paracontrolled operators). Namely, by defining

$$[\circledast, \circledast](f, g, h) = (f \circledast g) \circledast h - f(g \circledast h),$$

we can write $X \circledast \dagger$ as

$$X \circledast \dagger = S(t)(X_0, X_1) - 2(X + Y + \Upsilon)(\mathcal{I}(\dagger) \circledast \dagger) + \text{com}_1 \circledast \dagger + \text{com}_2,$$

where com_2 is given by $\text{com}_2 = [\circledast, \circledast](X + Y + \Upsilon, \mathcal{I}(\dagger), \dagger)$. Note that com_2 is a well defined distribution thanks to the smoothing property of $[\circledast, \circledast]$. See Lemma 2.4 in [34] and Proposition A.9 in [65].

Let us now consider the first commutator com_1 . Given an operator T , let

$$[T, \circledast](f, g) = T(f \circledast g) - f \circledast (Tg).$$

Then, by setting $\mathcal{S} = \langle \nabla \rangle \mathcal{I} = \langle \nabla \rangle (\partial_t^2 + 1 - \Delta)^{-1}$, we have

$$[\mathcal{I}, \circledast](f, g) = \mathcal{S} \circ [\langle \nabla \rangle^{-1}, \circledast](f, g) + [\mathcal{S}, \circledast](f, \langle \nabla \rangle^{-1}g).$$

It is easy to see that the first commutator $[\langle \nabla \rangle^{-1}, \circledast]$ enjoys certain smoothing.¹⁵ On the other hand, if we were to exhibit smoothing for the second commutator $[\mathcal{S}, \circledast]$ as in the parabolic setting, we would need to study the smoothing property of the commutator $[\sin(t\langle \nabla \rangle), \circledast]$. Unfortunately, there seems to be no smoothing for this commutator in general,¹⁶ which prevents us from working with commutators for our dispersive problem. By introducing the paracontrolled operators, we indeed exhibit smoothing under the commutator $[\mathcal{S}, \circledast]$ (and hence under $[\mathcal{I}, \circledast]$) in a probabilistic manner with a specific second input function, i.e. $g = \dagger$. See Proposition 1.11. This is in sharp contrast with the parabolic setting, where a smoothing can be shown for $[e^{t\Delta}, \circledast]$ in a deterministic manner (without specifying the second input function either).

Lastly, we point out that our approach via paracontrolled operators also works in the parabolic setting. In particular, in place of using commutators, we can direct study relevant paracontrolled operators to prove local well-posedness of SQE (1.10) on \mathbb{T}^3 .

¹⁵If f and g have regularities $0 < s_1 < 1$ and $s_2 < 0$ with $s_1 + s_2 < 0$, then each of $\langle \nabla \rangle^{-1}(f \circledast g)$ and $f \circledast (\langle \nabla \rangle^{-1}g)$ has regularity $s_2 + 1$. On the other hand, the commutator $[\langle \nabla \rangle^{-1}, \circledast](f, g)$ has regularity $s_1 + s_2 + 1$. Roughly speaking, this fact follows from the following observation; given $n, n_1, n_2 \in \mathbb{Z}^3$ with $n = n_1 + n_2$, we have

$$\left| \frac{1}{\langle n \rangle} - \frac{1}{\langle n_2 \rangle} \right| = \frac{|\langle n_2 \rangle - \langle n \rangle|}{\langle n \rangle \langle n_2 \rangle} \lesssim \frac{\langle n_1 \rangle}{\langle n \rangle \langle n_2 \rangle}$$

In particular, when $|n_1| \ll |n_2| \sim |n|$ and the first function f has positive regularity, this observation provides smoothing.

¹⁶Under $|n_1| \ll |n_2|$, there is no smoothing for $\sin(t\langle n_1 + n_2 \rangle) - (\sin t\langle n_2 \rangle)$.

2. NOTATIONS AND BASIC LEMMAS

2.1. Sobolev spaces and Besov spaces. Let $s \in \mathbb{R}$ and $1 \leq p \leq \infty$. We define the L^2 -based Sobolev space $H^s(\mathbb{T}^3)$ by the norm:

$$\|f\|_{H^s} = \|\langle n \rangle^s \widehat{f}(n)\|_{\ell_n^2}$$

and set $\mathcal{H}^s(\mathbb{T}^3)$ to be

$$\mathcal{H}^s(\mathbb{T}^3) = H^s(\mathbb{T}^3) \times H^{s-1}(\mathbb{T}^3).$$

We also define the L^p -based Sobolev space $W^{s,p}(\mathbb{T}^3)$ by the norm:

$$\|f\|_{W^{s,p}} = \|\mathcal{F}^{-1}(\langle n \rangle^s \widehat{f}(n))\|_{L^p}$$

with the standard modification when $p = \infty$. When $p = 2$, we have $H^s(\mathbb{T}^3) = W^{s,2}(\mathbb{T}^3)$.

Let $\phi : \mathbb{R} \rightarrow [0, 1]$ be a smooth bump function supported on $[-\frac{8}{5}, \frac{8}{5}]$ and $\phi \equiv 1$ on $[-\frac{5}{4}, \frac{5}{4}]$. For $\xi \in \mathbb{R}^3$, we set $\phi_0(\xi) = \phi(|\xi|)$ and

$$\phi_j(\xi) = \phi\left(\frac{|\xi|}{2^j}\right) - \phi\left(\frac{|\xi|}{2^{j-1}}\right)$$

for $j \in \mathbb{N}$. Then, for $j \in \mathbb{N}_0 := \mathbb{N} \cup \{0\}$, we define the Littlewood-Paley projector \mathbf{P}_j as the Fourier multiplier operator with a symbol φ_j given by

$$\varphi_j(\xi) = \frac{\phi_j(\xi)}{\sum_{k \in \mathbb{N}_0} \phi_k(\xi)}. \quad (2.1)$$

Note that, for each $\xi \in \mathbb{R}^3$, the sum in the denominator is over finitely many k 's. Thanks to the normalization (2.1), we have

$$f = \sum_{j=0}^{\infty} \mathbf{P}_j f,$$

which is used in (1.22).

We briefly recall the basic properties of the Besov spaces $B_{p,q}^s(\mathbb{T}^3)$ defined by the norm:

$$\|u\|_{B_{p,q}^s} = \left\| 2^{sj} \|\mathbf{P}_j u\|_{L_x^p} \right\|_{\ell_j^q(\mathbb{N}_0)}.$$

Note that $H^s(\mathbb{T}^3) = B_{2,2}^s(\mathbb{T}^3)$.

Lemma 2.1. (i) (paraproduct and resonant product estimates) *Let $s_1, s_2 \in \mathbb{R}$ and $1 \leq p, p_1, p_2, q \leq \infty$ such that $\frac{1}{p} = \frac{1}{p_1} + \frac{1}{p_2}$. Then, we have*

$$\|f \odot g\|_{B_{p,q}^{s_2}} \lesssim \|f\|_{L^{p_1}} \|g\|_{B_{p_2,q}^{s_2}}. \quad (2.2)$$

When $s_1 < 0$, we have

$$\|f \odot g\|_{B_{p,q}^{s_1+s_2}} \lesssim \|f\|_{B_{p_1,q}^{s_1}} \|g\|_{B_{p_2,q}^{s_2}}. \quad (2.3)$$

When $s_1 + s_2 > 0$, we have

$$\|f \odot g\|_{B_{p,q}^{s_1+s_2}} \lesssim \|f\|_{B_{p_1,q}^{s_1}} \|g\|_{B_{p_2,q}^{s_2}}. \quad (2.4)$$

(ii) *Let $s_1 < s_2$ and $1 \leq p, q \leq \infty$. Then, we have*

$$\|u\|_{B_{p,q}^{s_1}} \lesssim \|u\|_{W^{s_2,p}}. \quad (2.5)$$

The product estimates (2.2), (2.3), and (2.4) follow easily from the definition (1.22) of the paraproduct and the resonant product. See [3, 64] for details of the proofs in the non-periodic case (which can be easily extended to the current periodic setting). The embedding (2.5) follows from the ℓ^q -summability of $\{2^{(s_1-s_2)j}\}_{j \in \mathbb{N}_0}$ for $s_1 < s_2$ and the uniform boundedness of the Littlewood-Paley projector \mathbf{P}_j .

We also recall the following fractional Leibniz rule.

Lemma 2.2. *Let $0 \leq s \leq 1$. Suppose that $1 < p_j, q_j, r < \infty$, $\frac{1}{p_j} + \frac{1}{q_j} = \frac{1}{r}$, $j = 1, 2$. Then, we have*

$$\|\langle \nabla \rangle^s (fg)\|_{L^r(\mathbb{T}^d)} \lesssim \|f\|_{L^{p_1}(\mathbb{T}^d)} \|\langle \nabla \rangle^s g\|_{L^{q_1}(\mathbb{T}^d)} + \|\langle \nabla \rangle^s f\|_{L^{p_2}(\mathbb{T}^d)} \|g\|_{L^{q_2}(\mathbb{T}^d)}.$$

This lemma follows from the Coifman–Meyer theorem on \mathbb{R}^d (see [21] and the inequality (1.1) in [67]) and the transference principle [26, Theorem 3].

2.2. On discrete convolutions. Next, we recall the following basic lemma on a discrete convolution.

Lemma 2.3. (i) *Let $d \geq 1$ and $\alpha, \beta \in \mathbb{R}$ satisfy*

$$\alpha + \beta > d \quad \text{and} \quad \alpha, \beta < d.$$

Then, we have

$$\sum_{n=n_1+n_2} \frac{1}{\langle n_1 \rangle^\alpha \langle n_2 \rangle^\beta} \lesssim \langle n \rangle^{d-\alpha-\beta}$$

for any $n \in \mathbb{Z}^d$.

(ii) *Let $d \geq 1$ and $\alpha, \beta \in \mathbb{R}$ satisfy $\alpha + \beta > d$. Then, we have*

$$\sum_{\substack{n=n_1+n_2 \\ |n_1| \sim |n_2|}} \frac{1}{\langle n_1 \rangle^\alpha \langle n_2 \rangle^\beta} \lesssim \langle n \rangle^{d-\alpha-\beta}$$

for any $n \in \mathbb{Z}^d$.

Namely, in the resonant case (ii), we do not have the restriction $\alpha, \beta < d$. Lemma 2.3 follows from elementary computations. See, for example, Lemmas 4.1 and 4.2 in [66] for the proof.

2.3. Strichartz estimates. Given $0 \leq s \leq 1$, we say that a pair (q, r) is s -admissible (a pair (\tilde{q}, \tilde{r}) is dual s -admissible,¹⁷ respectively) if $1 \leq \tilde{q} < 2 < q \leq \infty$, $1 < \tilde{r} \leq 2 \leq r < \infty$,

$$\frac{1}{q} + \frac{3}{r} = \frac{3}{2} - s = \frac{1}{\tilde{q}} + \frac{3}{\tilde{r}} - 2, \quad \frac{1}{q} + \frac{1}{r} \leq \frac{1}{2}, \quad \text{and} \quad \frac{1}{\tilde{q}} + \frac{1}{\tilde{r}} \geq \frac{3}{2}.$$

We refer to the first two equalities as the scaling conditions and the last two inequalities as the admissibility conditions.

We say that u is a solution to the following nonhomogeneous linear wave equation:

$$\begin{cases} (\partial_t^2 + 1 - \Delta)u = f \\ (u, \partial_t u)|_{t=0} = (u_0, u_1) \end{cases} \quad (2.6)$$

on a time interval containing $t = 0$, if u satisfies the following Duhamel formulation:

$$u = \cos(t\langle \nabla \rangle)u_0 + \frac{\sin(t\langle \nabla \rangle)}{\langle \nabla \rangle}u_1 + \int_0^t \frac{\sin((t-t')\langle \nabla \rangle)}{\langle \nabla \rangle} f(t') dt'.$$

¹⁷Here, we define the notion of dual s -admissibility for the convenience of the presentation. Note that (\tilde{q}, \tilde{r}) is dual s -admissible if and only if (\tilde{q}', \tilde{r}') is $(1-s)$ -admissible.

In the following, we often use the following short-hand notation:

$$\mathcal{I}(f)(t) = \int_0^t \frac{\sin((t-t')\langle \nabla \rangle)}{\langle \nabla \rangle} f(t') dt'.$$

We now recall the Strichartz estimates for solutions to the nonhomogeneous linear wave equation (2.6).

Lemma 2.4. *Given $0 \leq s \leq 1$, let (q, r) and (\tilde{q}, \tilde{r}) be s -admissible and dual s -admissible pairs, respectively. Then, a solution u to the nonhomogeneous linear wave equation (2.6) satisfies*

$$\|(u, \partial_t u)\|_{L_T^\infty \mathcal{H}^s} + \|u\|_{L_T^q L_x^r} \lesssim \|(u_0, u_1)\|_{\mathcal{H}^s} + \|f\|_{L_T^{\tilde{q}} L_x^{\tilde{r}}}$$

for all $0 < T \leq 1$. The following estimate also holds:

$$\|(u, \partial_t u)\|_{L_T^\infty \mathcal{H}^s} + \|u\|_{L_T^q L_x^r} \lesssim \|(u_0, u_1)\|_{\mathcal{H}^s} + \|f\|_{L_T^1 H_x^{s-1}}$$

for all $0 < T \leq 1$. Here, we used a shorthand notation $L_T^q L_x^r = L^q([0, T]; L^r(\mathbb{T}^3))$, etc.

The Strichartz estimates on \mathbb{R}^d have been studied extensively by many mathematicians. See [31, 59, 55] in the context of the wave equation. For the Klein-Gordon equation under consideration, see [56]. Thanks to the finite speed of propagation, these estimates on \mathbb{T}^3 follow from the corresponding estimates on \mathbb{R}^3 .

In proving Theorem 1.12, we use the fact that $(8, \frac{8}{3})$ and $(4, 4)$ are $\frac{1}{4}$ -admissible and $\frac{1}{2}$ -admissible, respectively. We also use a dual $\frac{1}{2}$ -admissible pair $(\frac{4}{3}, \frac{4}{3})$. In proving Theorem 1.2, we use $(\frac{4}{1+2\sigma}, \frac{4}{1-2\sigma})$ and $(\frac{4}{3+8\sigma}, \frac{4}{3-4\sigma})$ which are $(\frac{1}{2} + \sigma)$ -admissible and dual $(\frac{1}{2} + \sigma)$ -admissible, respectively, for small $\sigma > 0$.

2.4. Tools from stochastic analysis. We conclude this section by recalling useful lemmas from stochastic analysis. See [9, 85] for basic definitions. Let (H, B, μ) be an abstract Wiener space. Namely, μ is a Gaussian measure on a separable Banach space B with $H \subset B$ as its Cameron-Martin space. Given a complete orthonormal system $\{e_j\}_{j \in \mathbb{N}} \subset B^*$ of $H^* = H$, we define a polynomial chaos of order k to be an element of the form $\prod_{j=1}^\infty H_{k_j}(\langle x, e_j \rangle)$, where $x \in B$, $k_j \neq 0$ for only finitely many j 's, $k = \sum_{j=1}^\infty k_j$, H_{k_j} is the Hermite polynomial of degree k_j , and $\langle \cdot, \cdot \rangle = {}_B \langle \cdot, \cdot \rangle_{B^*}$ denotes the B - B^* duality pairing. We then denote the closure of polynomial chaoses of order k under $L^2(B, \mu)$ by \mathcal{H}_k . The elements in \mathcal{H}_k are called homogeneous Wiener chaoses of order k . We also set

$$\mathcal{H}_{\leq k} = \bigoplus_{j=0}^k \mathcal{H}_j$$

for $k \in \mathbb{N}$.

Let $L = \Delta - x \cdot \nabla$ be the Ornstein-Uhlenbeck operator.¹⁸ Then, it is known that any element in \mathcal{H}_k is an eigenfunction of L with eigenvalue $-k$. Then, as a consequence of the hypercontractivity of the Ornstein-Uhlenbeck semigroup $U(t) = e^{tL}$ due to Nelson [68], we have the following Wiener chaos estimate [86, Theorem I.22]. See also [88, Proposition 2.4].

Lemma 2.5. *Let $k \in \mathbb{N}$. Then, we have*

$$\|X\|_{L^p(\Omega)} \leq (p-1)^{\frac{k}{2}} \|X\|_{L^2(\Omega)}$$

for any $p \geq 2$ and any $X \in \mathcal{H}_{\leq k}$.

¹⁸For simplicity, we write the definition of the Ornstein-Uhlenbeck operator L when $B = \mathbb{R}^d$.

The following lemma will be used in studying regularities of stochastic objects. We say that a stochastic process $X : \mathbb{R}_+ \rightarrow \mathcal{D}'(\mathbb{T}^d)$ is spatially homogeneous if $\{X(\cdot, t)\}_{t \in \mathbb{R}_+}$ and $\{X(x_0 + \cdot, t)\}_{t \in \mathbb{R}_+}$ have the same law for any $x_0 \in \mathbb{T}^d$. Given $h \in \mathbb{R}$, we define the difference operator δ_h by setting

$$\delta_h X(t) = X(t+h) - X(t). \quad (2.7)$$

Lemma 2.6. *Let $\{X_N\}_{N \in \mathbb{N}}$ and X be spatially homogeneous stochastic processes : $\mathbb{R}_+ \rightarrow \mathcal{D}'(\mathbb{T}^d)$. Suppose that there exists $k \in \mathbb{N}$ such that $X_N(t)$ and $X(t)$ belong to $\mathcal{H}_{\leq k}$ for each $t \in \mathbb{R}_+$.*

(i) *Let $t \in \mathbb{R}_+$. If there exists $s_0 \in \mathbb{R}$ such that*

$$\mathbb{E}[|\widehat{X}(n, t)|^2] \lesssim \langle n \rangle^{-d-2s_0}$$

for any $n \in \mathbb{Z}^d$, then we have $X(t) \in W^{s, \infty}(\mathbb{T}^d)$, $s < s_0$, almost surely. Furthermore, if there exists $\gamma > 0$ such that

$$\mathbb{E}[|\widehat{X}_N(n, t) - \widehat{X}(n, t)|^2] \lesssim N^{-\gamma} \langle n \rangle^{-d-2s_0}$$

for any $n \in \mathbb{Z}^d$ and $N \geq 1$, then $X_N(t)$ converges to $X(t)$ in $W^{s, \infty}(\mathbb{T}^d)$, $s < s_0$, almost surely.

(ii) *Let $T > 0$ and suppose that (i) holds on $[0, T]$. If there exists $\sigma \in (0, 1)$ such that*

$$\mathbb{E}[|\delta_h \widehat{X}(n, t)|^2] \lesssim \langle n \rangle^{-d-2s_0+\sigma} |h|^\sigma,$$

for any $n \in \mathbb{Z}^d$, $t \in [0, T]$, and $h \in [-1, 1]$,¹⁹ then we have $X \in C([0, T]; W^{s, \infty}(\mathbb{T}^d))$, $s < s_0 - \frac{\sigma}{2}$, almost surely. Furthermore, if there exists $\gamma > 0$ such that

$$\mathbb{E}[|\delta_h \widehat{X}_N(n, t) - \delta_h \widehat{X}(n, t)|^2] \lesssim N^{-\gamma} \langle n \rangle^{-d-2s_0+\sigma} |h|^\sigma,$$

for any $n \in \mathbb{Z}^d$, $t \in [0, T]$, $h \in [-1, 1]$, and $N \geq 1$, then X_N converges to X in $C([0, T]; W^{s, \infty}(\mathbb{T}^d))$, $s < s_0 - \frac{\sigma}{2}$, almost surely.

Lemma 2.6 follows from a straightforward application of the Wiener chaos estimate (Lemma 2.5). For the proof, see Proposition 3.6 in [66] and Appendix in [76]. As compared to Proposition 3.6 in [66], we made small adjustments. In studying the time regularity, we made the following modifications: $\langle n \rangle^{-d-2s_0+2\sigma} \mapsto \langle n \rangle^{-d-2s_0+\sigma}$ and $s < s_0 - \sigma \mapsto s < s_0 - \frac{\sigma}{2}$ so that it is suitable for studying the wave equation. Moreover, while the result in [66] is stated in terms of the Besov-Hölder space $C^s(\mathbb{T}^d) = B_{\infty, \infty}^s(\mathbb{T}^d)$, Lemma 2.6 handles the L^∞ -based Sobolev space $W^{s, \infty}(\mathbb{T}^3)$. Note that the required modification of the proof is straightforward since $W^{s, \infty}(\mathbb{T}^d)$ and $B_{\infty, \infty}^s(\mathbb{T}^d)$ differ only logarithmically:

$$\|f\|_{W^{s, \infty}} \leq \sum_{j=0}^{\infty} \|\mathbf{P}_j f\|_{W^{s, \infty}} \lesssim \|f\|_{B_{\infty, \infty}^{s+\varepsilon}}$$

for any $\varepsilon > 0$. For the proof of the almost sure convergence claims, see [76].

Lastly, we recall the following Wick's theorem. See Proposition I.2 in [86].

Lemma 2.7. *Let g_1, \dots, g_{2n} be (not necessarily distinct) real-valued jointly Gaussian random variables. Then, we have*

$$\mathbb{E}[g_1 \cdots g_{2n}] = \sum \prod_{k=1}^n \mathbb{E}[g_{i_k} g_{j_k}],$$

where the sum is over all partitions of $\{1, \dots, 2n\}$ into disjoint pairs (i_k, j_k) .

¹⁹We impose $h \geq -t$ such that $t+h \geq 0$.

3. ON THE STOCHASTIC TERMS, PART I

In this and the next sections, we establish the regularity properties of the stochastic objects \mathfrak{t} , \mathfrak{Y} , and \mathfrak{Y}^\bullet defined in (1.14), (1.15), and (1.26), respectively. The following lemma establishes the regularity properties of the stochastic convolution \mathfrak{t} and the Wick power \mathfrak{v} . See also the proof of Proposition 2.1 in [36].

Lemma 3.1. *Let $T > 0$.*

(i) *For any $\varepsilon > 0$, \mathfrak{t}_N in (1.18) converges to \mathfrak{t} in $C([0, T]; W^{-\frac{1}{2}-\varepsilon, \infty}(\mathbb{T}^3))$ almost surely. In particular, we have*

$$\mathfrak{t} \in C([0, T]; W^{-\frac{1}{2}-\varepsilon, \infty}(\mathbb{T}^3))$$

almost surely.

(ii) *For any $\varepsilon > 0$, \mathfrak{v}_N in (1.19) converges to \mathfrak{v} in $C([0, T]; W^{-1-\varepsilon, \infty}(\mathbb{T}^3))$ almost surely. In particular, we have*

$$\mathfrak{v} \in C([0, T]; W^{-1-\varepsilon, \infty}(\mathbb{T}^3))$$

almost surely.

Proof. (i) Let $t \geq 0$. From (1.9), we have

$$\widehat{\mathfrak{t}}(n, t) = \int_0^t \frac{\sin((t-t')\langle n \rangle)}{\langle n \rangle} d\beta_n(t') \quad (3.1)$$

and thus

$$\begin{aligned} \mathbb{E}[|\widehat{\mathfrak{t}}(n, t)|^2] &= \int_0^t \left| \frac{\sin((t-t')\langle n \rangle)}{\langle n \rangle} \right|^2 dt' = \frac{t}{2\langle n \rangle^2} - \frac{\sin(2t\langle n \rangle)}{4\langle n \rangle^3} \\ &\leq C(t)\langle n \rangle^{-2} \end{aligned} \quad (3.2)$$

for any $n \in \mathbb{Z}^3$. Hence from Lemma 2.6, we conclude that $\mathfrak{t}(t) \in W^{-\frac{1}{2}-\varepsilon, \infty}(\mathbb{T}^3)$ almost surely for any $\varepsilon > 0$.

Let $0 \leq t_2 \leq t_1$. From (1.9), we have

$$\begin{aligned} \widehat{\mathfrak{t}}(n, t_1) - \widehat{\mathfrak{t}}(n, t_2) &= \int_{t_2}^{t_1} \frac{\sin((t_1-t')\langle n \rangle)}{\langle n \rangle} d\beta_n(t') \\ &\quad + \int_0^{t_2} \frac{\sin((t_1-t')\langle n \rangle) - \sin((t_2-t')\langle n \rangle)}{\langle n \rangle} d\beta_n(t'). \end{aligned} \quad (3.3)$$

Then, from the mean value theorem, we have

$$\begin{aligned} \mathbb{E}[|\widehat{\mathfrak{t}}(n, t_1) - \widehat{\mathfrak{t}}(n, t_2)|^2] &\lesssim \langle n \rangle^{-2}|t_1 - t_2| + t_2 \langle n \rangle^{-2+\sigma}|t_1 - t_2|^\sigma \\ &\leq C(t_2)\langle n \rangle^{-2+\sigma}|t_1 - t_2|^\sigma \end{aligned} \quad (3.4)$$

for any $n \in \mathbb{Z}^3$, $0 \leq t_2 \leq t_1$ with $t_1 - t_2 \leq 1$, and $\sigma \in [0, 1]$. Hence, from Lemma 2.6, we conclude that $\mathfrak{t} \in C(\mathbb{R}_+; W^{-\frac{1}{2}-\varepsilon, \infty}(\mathbb{T}^3))$ almost surely for any $\varepsilon > 0$.

Proceeding as above, we have

$$\mathbb{E}[|\widehat{\mathfrak{t}}_M(n, t) - \widehat{\mathfrak{t}}_N(n, t)|^2] \leq C(t)\mathbf{1}_{|n|>N} \cdot \langle n \rangle^{-2} \leq C(t)N^{-\gamma}\langle n \rangle^{-2+\gamma}.$$

for any $n \in \mathbb{Z}^3$, $M \geq N \geq 1$, and $\gamma \geq 0$. Similarly, with δ_h as in (2.7), we have

$$\begin{aligned} \mathbb{E}[|\delta_h \widehat{\mathfrak{t}}_M(n, t) - \delta_h \widehat{\mathfrak{t}}_N(n, t)|^2] &\lesssim C(t)\mathbf{1}_{|n|>N} \cdot \langle n \rangle^{-2+\sigma}|h|^\sigma \\ &\lesssim C(t)N^{-\gamma}\langle n \rangle^{-2+\sigma+\gamma}|h|^\sigma \end{aligned}$$

for any $n \in \mathbb{Z}^3$, $M \geq N \geq 1$, $h \in [-1, 1]$, $\gamma \geq 0$, and $\sigma \in [0, 1]$. Therefore, it follows from Lemma 2.6 that given $T > 0$ and $\varepsilon > 0$, the truncated stochastic convolution $\mathfrak{!}_N$ converges to $\mathfrak{!}$ in $C([0, T]; W^{-\frac{1}{2}-\varepsilon, \infty}(\mathbb{T}^3))$ almost surely.

(ii) Proceeding as in Part (i), the main task is to estimate $\mathbb{E}[|\widehat{\mathfrak{v}}(n, t)|^2]$. The following discussion holds for \mathfrak{v}_N with constants independent of $N \in \mathbb{N} \cup \{\infty\}$. From (1.19) and (1.20), we have

$$\begin{aligned} \mathbb{E}[|\widehat{\mathfrak{v}}(n, t)|^2] &= \sum_{n=n_1+n_2} \sum_{n=n'_1+n'_2} \mathbb{E} \left[\left(\widehat{\mathfrak{v}}(n_1, t) \widehat{\mathfrak{v}}(n_2, t) - \mathbf{1}_{n=0} \cdot \mathbb{E}[|\widehat{\mathfrak{v}}(n_1, t)|^2] \right) \right. \\ &\quad \left. \times \overline{\left(\widehat{\mathfrak{v}}(n'_1, t) \widehat{\mathfrak{v}}(n'_2, t) - \mathbf{1}_{n=0} \cdot \mathbb{E}[|\widehat{\mathfrak{v}}(n'_1, t)|^2] \right)} \right]. \end{aligned} \quad (3.5)$$

In order to have non-zero contribution in (3.5), we must have $n_1 = n'_1$ and $n_2 = n'_2$ up to permutation. Thus, with (1.9) and Lemma 2.3, we have

$$\mathbb{E}[|\widehat{\mathfrak{v}}(n, t)|^2] \lesssim t^2 \sum_{n=n_1+n_2} \frac{1}{\langle n_1 \rangle^2 \langle n_2 \rangle^2} \lesssim t^2 \langle n \rangle^{-1}. \quad (3.6)$$

Hence from Lemma 2.6, we conclude that $\mathfrak{v}(t) \in W^{-1-\varepsilon, \infty}(\mathbb{T}^3)$ almost surely for any $\varepsilon > 0$. A similar argument shows that $\mathfrak{v} \in C([0, T]; W^{-1-\varepsilon, \infty}(\mathbb{T}^3))$ almost surely and that \mathfrak{v}_N converges to \mathfrak{v} in $C([0, T]; W^{-1-\varepsilon, \infty}(\mathbb{T}^3))$ almost surely. \square

Remark 3.2. As we saw in the proof of Lemma 3.1 (i), once we establish regularity properties of a given stochastic object τ , then a slight modification of the argument shows convergence of the truncated stochastic objects τ_N to τ . Hence, in the following, we only establish claimed regularity properties of given stochastic terms.

Next, we study the regularity of \mathfrak{Y} . As pointed in the introduction, a naive parabolic thinking would give a regularity of $0- = (-\frac{1}{2}-) + (-\frac{1}{2}-) + 1$, where one degree of smoothing comes from the Duhamel integral operator \mathcal{I} . By exploiting multilinear dispersive effect, we show that there is in fact an extra $\frac{1}{2}$ -smoothing.

Proof of Proposition 1.6. By definition $\mathfrak{Y} = \mathcal{I}(\mathfrak{v})$, we have

$$\widehat{\mathfrak{Y}}(n, t) = \int_0^t \frac{\sin((t-t')\langle n \rangle)}{\langle n \rangle} \widehat{\mathfrak{v}}(n, t') dt' \quad (3.7)$$

and thus we have

$$\widehat{\partial_t \mathfrak{Y}}(n, t) = \int_0^t \cos((t-t')\langle n \rangle) \widehat{\mathfrak{v}}(n, t') dt'.$$

Then, from (the proof of) Lemma 3.1 (ii), we conclude that

$$\partial_t \mathfrak{Y} \in C([0, T]; W^{-1-\varepsilon, \infty}(\mathbb{T}^3))$$

almost surely for any $\varepsilon > 0$.

In the following, we focus on proving that $\mathfrak{Y} \in C([0, T]; W^{\frac{1}{2}-\varepsilon, \infty}(\mathbb{T}^3))$ almost surely. In view of Lemma 2.6, it suffices to show that there exists small $\sigma \in (0, 1)$ such that

$$\mathbb{E}[|\widehat{\mathfrak{Y}}(n, t)|^2] \leq C(T) \langle n \rangle^{-4+}, \quad (3.8)$$

$$\mathbb{E}[|\widehat{\mathfrak{Y}}(n, t_1) - \widehat{\mathfrak{Y}}(n, t_2)|^2] \leq C(T) \langle n \rangle^{-4+\sigma+} |t_1 - t_2|^\sigma \quad (3.9)$$

for any $n \in \mathbb{Z}^3$ and $0 \leq t, t_1, t_2 \leq T$ with $0 < |t_1 - t_2| < 1$.

We first prove (3.8) in the following. From (3.7), we have

$$\mathbb{E}[|\widehat{Y}(n, t)|^2] = \int_0^t \frac{\sin((t-t_1)\langle n \rangle)}{\langle n \rangle} \int_0^{t_1} \frac{\sin((t-t_2)\langle n \rangle)}{\langle n \rangle} \mathbb{E}[\widehat{v}(n, t_1) \overline{\widehat{v}(n, t_2)}] dt_2 dt_1. \quad (3.10)$$

When $n = 0$, it follows from (1.19) with (1.20) and (1.32) that, we have

$$\begin{aligned} \mathbb{E}[|\widehat{Y}(0, t)|^2] &= \int_0^t \sin(t-t_1) \int_0^{t_1} \sin(t-t_2) \mathbb{E}[\widehat{v}(0, t_1) \overline{\widehat{v}(0, t_2)}] dt_2 dt_1 \\ &= \int_0^t \sin(t-t_1) \int_0^{t_1} \sin(t-t_2) \\ &\quad \times \sum_{k_1, k_2 \in \mathbb{Z}^3} \mathbb{E}[(|\widehat{v}(k_1, t_1)|^2 - \sigma_{k_1}(t_1, t_1)) (|\widehat{v}(k_2, t_2)|^2 - \sigma_{k_2}(t_2, t_2))] dt_2 dt_1 \\ &\leq C(T) \sum_{k \in \mathbb{Z}^3} \frac{1}{\langle k \rangle^4} \leq C(T), \end{aligned}$$

where $\sigma_{k_j}(t_j, t_j)$ is as in (1.32). In the last step, we used

$$\mathbb{E}[(|\widehat{v}(k_1, t_1)|^2 - \sigma_{k_1}(t_1, t_1)) (|\widehat{v}(k_2, t_2)|^2 - \sigma_{k_2}(t_2, t_2))] = \mathbf{1}_{k_1 = \pm k_2} \cdot \sigma_{k_1}(t_1, t_2)^2. \quad (3.11)$$

The identity (3.11) follows from Wick's theorem (Lemma 2.7). This proves (3.8) when $n = 0$.

In the following, we assume $n \neq 0$. By expanding $\widehat{v}(n, t_1)$ and $\widehat{v}(n, t_2)$ as in (3.5) with $n = n_1 + n_2$ for $\widehat{v}(n, t_1)$ and $n = n'_1 + n'_2$ for $\widehat{v}(n, t_2)$, we see that we must have $n_1 = n'_1$ and $n_2 = n'_2$ up to permutation in order to have non-zero contribution in (3.10). Without loss of generality, assume that $0 \leq t_2 \leq t_1 \leq t$. Then, we have

$$\begin{aligned} \mathbb{E}[|\widehat{Y}(n, t)|^2] &= 4 \sum_{\substack{n=n_1+n_2 \\ n_1 \neq \pm n_2}} \int_0^t \frac{\sin((t-t_1)\langle n \rangle)}{\langle n \rangle} \int_0^{t_1} \frac{\sin((t-t_2)\langle n \rangle)}{\langle n \rangle} \sigma_{n_1}(t_1, t_2) \sigma_{n_2}(t_1, t_2) dt_2 dt_1 \\ &\quad + 2 \cdot \mathbf{1}_{n \in 2\mathbb{Z}^3 \setminus \{0\}} \int_0^t \frac{\sin((t-t_1)\langle n \rangle)}{\langle n \rangle} \int_0^{t_1} \frac{\sin((t-t_2)\langle n \rangle)}{\langle n \rangle} \\ &\quad \times \mathbb{E}[\widehat{v}(\frac{n}{2}, t_1)^2 \overline{\widehat{v}(\frac{n}{2}, t_2)^2}] dt_2 dt_1 \\ &=: \text{I}(n, t) + \text{II}(n, t), \end{aligned} \quad (3.12)$$

where $\sigma_{n_j}(t_1, t_2)$ is as in (1.32) and $\text{II}(n, t)$ denotes the contribution from $n_1 = n_2 = n'_1 = n'_2 = \frac{n}{2}$.

We first estimate the second term $\text{II}(n, t)$ in (3.12). By Wick's theorem (Lemma 2.7) with (1.32), we have

$$\left| \mathbb{E}[\widehat{v}(\frac{n}{2}, t_1)^2 \overline{\widehat{v}(\frac{n}{2}, t_2)^2}] \right| \leq C(T) \langle n \rangle^{-4}$$

under $0 \leq t_2 \leq t_1 \leq t \leq T$. Hence, from (3.12), we conclude that

$$|\text{II}(n, t)| \leq C(T) \langle n \rangle^{-6},$$

verifying (3.8).

In the following, we estimate $I(n, t)$ in (3.12):

$$\begin{aligned} I(n, t) = & - \sum_{k_1, k_2 \in \{1, 2\}} \sum_{\varepsilon_1, \varepsilon_2 \in \{-1, 1\}} \frac{\varepsilon_1 \varepsilon_2 e^{i(\varepsilon_1 + \varepsilon_2)t \langle n \rangle}}{\langle n \rangle^2} \sum_{\substack{n = n_1 + n_2 \\ n_1 \neq \pm n_2}} \int_0^t e^{-i\varepsilon_1 t_1 \langle n \rangle} \\ & \times \int_0^{t_1} e^{-i\varepsilon_2 t_2 \langle n \rangle} \prod_{j=1}^2 \sigma_{n_j}^{(k_j)}(t_1, t_2) dt_2 dt_1 =: \sum_{k_1, k_2 \in \{1, 2\}} I^{(k_1, k_2)}(n, t), \end{aligned} \quad (3.13)$$

where $\sigma_n^{(1)}(t_1, t_2)$ and $\sigma_n^{(2)}(t_1, t_2)$ are defined by

$$\begin{aligned} \sigma_n^{(1)}(t_1, t_2) & := \frac{\cos((t_1 - t_2)\langle n \rangle)}{2\langle n \rangle^2} t_2, \\ \sigma_n^{(2)}(t_1, t_2) & := \frac{\sin((t_1 - t_2)\langle n \rangle)}{4\langle n \rangle^3} - \frac{\sin((t_1 + t_2)\langle n \rangle)}{4\langle n \rangle^3} \end{aligned} \quad (3.14)$$

such that $\sigma_n(t_1, t_2) = \sigma_n^{(1)}(t_1, t_2) + \sigma_n^{(2)}(t_1, t_2)$. If $|n_1| \sim 1$ or $|n_2| \sim 1$, then from (3.14) with $\langle n_1 \rangle \langle n_2 \rangle \gtrsim \langle n \rangle$, we easily obtain

$$|I(n, t)| \leq C(T) \langle n \rangle^{-4+}, \quad (3.15)$$

satisfying (3.8). Hence, we assume $|n_1|, |n_2| \gg 1$ in the following. By Lemma 2.3 with (3.14), we can easily bound the contribution to $I(n, t)$ in (3.13) from $(k_1, k_2) \neq (1, 1)$ and obtain for them the decay required in (3.15).

In the following, we estimate the worst contribution to $I(n, t)$ coming from $(k_1, k_2) = (1, 1)$:

$$\begin{aligned} I^{(1,1)}(n, t) & := -\frac{1}{16} \sum_{\varepsilon_1, \varepsilon_2, \varepsilon_3, \varepsilon_4 \in \{-1, 1\}} \sum_{\substack{n = n_1 + n_2 \\ n_1 \neq \pm n_2}} \frac{\varepsilon_1 \varepsilon_2 e^{i(\varepsilon_1 + \varepsilon_2)t \langle n \rangle}}{\langle n \rangle^2 \langle n_1 \rangle^2 \langle n_2 \rangle^2} \\ & \times \int_0^t e^{-it_1 \kappa_1(\bar{n})} \int_0^{t_1} t_2^2 e^{-it_2 \kappa_2(\bar{n})} dt_2 dt_1, \end{aligned}$$

where $\kappa_1(\bar{n})$ and $\kappa_2(\bar{n})$ are defined by

$$\begin{aligned} \kappa_1(\bar{n}) & = \varepsilon_1 \langle n \rangle - \varepsilon_3 \langle n_1 \rangle - \varepsilon_4 \langle n_2 \rangle, \\ \kappa_2(\bar{n}) & = \varepsilon_2 \langle n \rangle + \varepsilon_3 \langle n_1 \rangle + \varepsilon_4 \langle n_2 \rangle. \end{aligned}$$

When $|n| \lesssim 1$, (3.15) trivially holds. Hence, we assume $|n| \gg 1$. We have to carefully estimate the different contributions coming from the various combinations of $\bar{\varepsilon} = (\varepsilon_1, \varepsilon_2, \varepsilon_3, \varepsilon_4)$ by exploiting either (i) the dispersion (= oscillation) or (ii) smallness of the measure of the relevant frequency set.

Fix our choice of $\bar{\varepsilon} = (\varepsilon_1, \varepsilon_2, \varepsilon_3, \varepsilon_4)$ and denote by $I_{\bar{\varepsilon}}^{(1,1)}(n, t)$ the associated contribution to $I^{(1,1)}(n, t)$. By switching the order of integration and first integrating in t_1 , we have

$$\begin{aligned} & \left| \int_0^t e^{-it_1 \kappa_1(\bar{n})} \int_0^{t_1} t_2^2 e^{-it_2 \kappa_2(\bar{n})} dt_2 dt_1 \right| \\ & = \left| \int_0^t t_2^2 e^{-it_2 \kappa_2(\bar{n})} \frac{e^{-it_2 \kappa_1(\bar{n})} - e^{-it_2 \kappa_1(\bar{n})}}{-i\kappa_1(\bar{n})} dt_2 \right| \leq C(T) (1 + |\kappa_1(\bar{n})|)^{-1}. \end{aligned}$$

Thus, we have

$$|I_{\bar{\varepsilon}}^{(1,1)}(n, t)| \leq C(T) \sum_{n = n_1 + n_2} \frac{1}{\langle n \rangle^2 \langle n_1 \rangle^2 \langle n_2 \rangle^2 (1 + |\kappa_1(\bar{n})|)}. \quad (3.16)$$

Without loss of generality, by symmetry we can assume $|n_1| \geq |n_2|$ in the following when estimating the sum on the right hand side.

- **Case 1:** $(\varepsilon_1, \varepsilon_3, \varepsilon_4) = (\pm 1, \mp 1, \mp 1)$ or $(\pm 1, \mp 1, \pm 1)$.

In this case, we have $|\kappa_1(\bar{n})| \geq \langle n \rangle$. Then, from Lemma 2.3, we obtain

$$|\mathbb{I}_{\bar{\varepsilon}}^{(1,1)}(n, t)| \leq C(T) \langle n \rangle^{-4}.$$

This proves (3.8).

- **Case 2:** $(\varepsilon_1, \varepsilon_3, \varepsilon_4) = (\pm 1, \pm 1, \mp 1)$.

In this case, we have $|\kappa_1(\bar{n})| = \langle n \rangle + \langle n_2 \rangle - \langle n_1 \rangle$. Under $n = n_1 + n_2$ and $|n_1| \geq |n_2|$, we have

$$\langle n_1 \rangle \sim \langle n \rangle + \langle n_2 \rangle. \quad (3.17)$$

Under $n = n_1 + n_2$, three vectors n , n_1 , and n_2 form a triangle, where we view n_1 with a vector based at n_2 . Then, by the law of cosines, we have

$$|n|^2 + |n_2|^2 - |n_1|^2 = 2|n||n_2| \cos(\angle(n, n_2)), \quad (3.18)$$

where $\angle(n, n_2)$ denotes the angle between n and n_2 . Then, from (3.17) and (3.18), we have

$$\begin{aligned} |\kappa_1(\bar{n})| &= \frac{(\langle n \rangle + \langle n_2 \rangle)^2 - \langle n_1 \rangle^2}{\langle n \rangle + \langle n_2 \rangle + \langle n_1 \rangle} = \frac{2\langle n \rangle \langle n_2 \rangle + |n|^2 + |n_2|^2 - |n_1|^2 + 1}{\langle n \rangle + \langle n_2 \rangle + \langle n_1 \rangle} \\ &\gtrsim \frac{|n||n_2|(1 - \cos \theta)}{\langle n_1 \rangle} \end{aligned} \quad (3.19)$$

where $\theta = \angle(n_2, -n) \in [0, \pi]$ is the angle between n_2 and $-n$.

Subcase 2.i: We first consider the case $1 - \cos \theta \gtrsim 1$. See Figure 2. In this case, from (3.16) and (3.19) with Lemma 2.3, we have

$$\begin{aligned} |\mathbb{I}_{\bar{\varepsilon}}^{(1,1)}(n, t)| &\leq C(T) \sum_{n=n_1+n_2} \frac{1}{\langle n \rangle^3 \langle n_1 \rangle \langle n_2 \rangle^3} \\ &\leq C(T) \langle n \rangle^{-4+}, \end{aligned} \quad (3.20)$$

yielding (3.8).

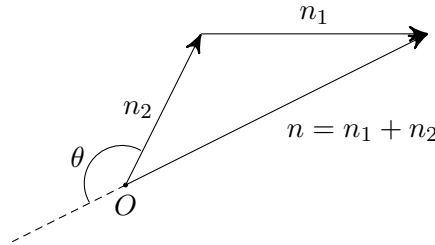


FIGURE 2. A typical configuration in Subcase 2.i

Subcase 2.ii: Next, we consider the case $1 - \cos \theta \ll 1$. In this case, we have $0 \leq \theta \ll 1$, namely, n and n_2 point in almost opposite directions. In particular, we have $1 - \cos \theta \sim \theta^2 \ll 1$. By dyadically decomposing n_2 into $|n_2| \sim N_2$ for dyadic $N_2 \geq 1$, we see that for fixed $n \in \mathbb{Z}^3$, the range of possible n_2 with $|n_2| \sim N_2$ is constrained to a cone \mathcal{C} whose height is $\sim N_2 \cos \theta \sim N_2$ and the base disc of radius $\sim N_2 \sin \theta \sim N_2 \theta$ with the direction of the central axis of the cone

given by $-n$. Hence, we have $\text{vol}(\mathcal{C}) \sim N_2^3 \theta^2$. See Figure 3. Then, from (3.16) and (3.19) with $|n_1| \gtrsim \max(|n|, |n_2|)$, we have

$$\begin{aligned} |\mathbb{I}_{\varepsilon}^{(1,1)}(n, t)| &\leq C(T) \sum_{\substack{N_2 \geq 1 \\ \text{dyadic}}} \frac{1}{\langle n \rangle^3 \max(\langle n \rangle, N_2) N_2^3 \theta^2} N_2^3 \theta^2 \\ &\leq C(T) \langle n \rangle^{-4+}, \end{aligned} \quad (3.21)$$

yielding (3.8).

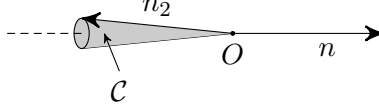


FIGURE 3. A typical configuration in Subcase 2.ii. Here, we omit the vector n_1 .

- **Case 3:** $(\varepsilon_1, \varepsilon_3, \varepsilon_4) = (\pm 1, \pm 1, \pm 1)$.

In this case, we have $|\kappa_1(\bar{n})| = \langle n_1 \rangle + \langle n_2 \rangle - \langle n \rangle$. By the law of cosines, we have

$$|n_1|^2 + |n_2|^2 - |n|^2 = 2|n_1||n_2| \cos(\angle(-n_1, n_2)). \quad (3.22)$$

Then, by proceeding as in Case 2 with (3.17) and (3.22), we have

$$|\kappa_1(\bar{n})| = \frac{(\langle n_1 \rangle + \langle n_2 \rangle)^2 - \langle n \rangle^2}{\langle n_1 \rangle + \langle n_2 \rangle + \langle n \rangle} \gtrsim \frac{|n_1||n_2|(1 - \cos \theta)}{\langle n_1 \rangle} \quad (3.23)$$

where $\theta = \angle(n_1, n_2) \in [0, \pi]$ is the angle between n_1 and n_2 . When $1 - \cos \theta \gtrsim 1$, we can proceed as in (3.20). Next, consider the case $1 - \cos \theta \sim \theta^2 \ll 1$. Since $n = n_1 + n_2$, we see that the angle $\angle(n, n_2)$ between n and n_2 is smaller than $\theta = \angle(n_1, n_2)$ in this case.²⁰ Hence, with $|n_1| \gtrsim |n|$, we can repeat the computation in (3.21) and obtain the same bound. This concludes the proof of (3.8) by choosing $\delta > 0$ sufficiently small.

Next, we briefly discuss the difference estimate (3.9). Let $0 \leq t_2 \leq t_1 \leq T$. We need to estimate

$$\begin{aligned} \mathbb{E}[|\widehat{\Upsilon}(n, t_1) - \widehat{\Upsilon}(n, t_2)|^2] &= \mathbb{E}\left[\left(\widehat{\Upsilon}(n, t_1) - \widehat{\Upsilon}(n, t_2)\right) \overline{\widehat{\Upsilon}(n, t_1)}\right] \\ &\quad - \mathbb{E}\left[\left(\widehat{\Upsilon}(n, t_1) - \widehat{\Upsilon}(n, t_2)\right) \overline{\widehat{\Upsilon}(n, t_2)}\right]. \end{aligned} \quad (3.24)$$

From (3.7), we have

$$\begin{aligned} \widehat{\Upsilon}(n, t_1) - \widehat{\Upsilon}(n, t_2) &= \int_{t_2}^{t_1} \frac{\sin((t_1 - t')\langle n \rangle)}{\langle n \rangle} \widehat{\Upsilon}(n, t') dt' \\ &\quad + \int_0^{t_2} \frac{\sin((t_1 - t')\langle n \rangle) - \sin((t_2 - t')\langle n \rangle)}{\langle n \rangle} \widehat{\Upsilon}(n, t') dt'. \end{aligned} \quad (3.25)$$

We crudely estimate (3.24) by using (3.25), (3.6), and the mean value theorem to control the difference. As a result, we have

$$\mathbb{E}[|\widehat{\Upsilon}(n, t_1) - \widehat{\Upsilon}(n, t_2)|^2] \lesssim C(T) \langle n \rangle^{-2} |t_1 - t_2|. \quad (3.26)$$

²⁰Form a triangle with three vectors n , n_1 , and n_2 with n and n_2 sharing a common base point such that $n = n_1 + n_2$. Then, the angle $\angle(n_1, n_2)$ is an exterior angle to this triangle and thus we have $\angle(n_1, n_2) = \angle(n, n_2) + \angle(-n, -n_1) > \angle(n, n_2)$.

By interpolating (3.8) and (3.26), we obtain (3.9) for some small $\sigma \in (0, 1)$.

This completes the proof of Proposition 1.6. \square

Remark 3.3. In Cases 2 and 3, we separately estimated the contributions from (i) $1 - \cos \theta \gtrsim 1$ and (ii) $1 - \cos \theta \ll 1$. Note that these correspond to the time non-resonant and (nearly) time resonant case in the dispersive PDE terminology. In the time resonant case (ii), there was no gain from time integration and thus we needed to exploit the smallness of the set (i.e. the cone \mathcal{C}) for the time resonant case by observing that the time resonance is caused by the parallel interaction of waves, i.e. n , n_1 , and n_2 (close to) being parallel. A need for such a geometric consideration is one difference between the study of dispersive equations from that of parabolic equations.

4. ON THE STOCHASTIC TERMS, PART II

In this section, we study the regularity property of the resonant product \mathfrak{Y} defined in (1.26) (Proposition 1.8). From (1.22) and the definition of the Littlewood-Paley projector $\mathcal{F}(\mathbf{P}_j f)(n) = \varphi_j(n)\widehat{f}(n)$, we have

$$\begin{aligned} \widehat{\mathfrak{Y}}(n, t) &= \sum_{\substack{n=n_1+n_2+n_3 \\ n_1+n_2 \neq 0}} \sum_{|j-k| \leq 2} \varphi_j(n_1+n_2)\varphi_k(n_3) \\ &\quad \times \int_0^t \frac{\sin((t-t')\langle n_1+n_2 \rangle)}{\langle n_1+n_2 \rangle} \widehat{\mathfrak{f}}(n_1, t')\widehat{\mathfrak{f}}(n_2, t')dt' \cdot \widehat{\mathfrak{f}}(n_3, t) \\ &\quad + \sum_{n_1 \in \mathbb{Z}^3} \sum_{|k| \leq 2} \varphi_k(n_3) \int_0^t \sin(t-t') \cdot (|\widehat{\mathfrak{f}}(n_1, t')|^2 - \sigma_{n_1}(t'))dt' \cdot \widehat{\mathfrak{f}}(n, t) \\ &=: \widehat{\mathcal{R}}_1(n, t) + \widehat{\mathcal{R}}_2(n, t). \end{aligned}$$

For simplicity of notation, however, we write

$$\begin{aligned} \widehat{\mathcal{R}}_1(n, t) &= \sum_{\substack{n=n_1+n_2+n_3 \\ |n_1+n_2| \sim |n_3| \\ n_1+n_2 \neq 0}} \int_0^t \frac{\sin((t-t')\langle n_1+n_2 \rangle)}{\langle n_1+n_2 \rangle} \widehat{\mathfrak{f}}(n_1, t')\widehat{\mathfrak{f}}(n_2, t')dt' \cdot \widehat{\mathfrak{f}}(n_3, t), \\ \widehat{\mathcal{R}}_2(n, t) &= \sum_{n_1 \in \mathbb{Z}^3} \mathbf{1}_{|n| \sim 1} \int_0^t \sin(t-t') \cdot (|\widehat{\mathfrak{f}}(n_1, t')|^2 - \sigma_{n_1}(t'))dt' \cdot \widehat{\mathfrak{f}}(n, t), \end{aligned} \tag{4.1}$$

where the conditions $|n_1+n_2| \sim |n_3|$ in the first term and $|n| \sim 1$ in the second term signify the resonant product \ominus . The second term \mathcal{R}_2 in (4.1) corresponds to the contribution from $n_1+n_2=0$ and is already renormalized from the Wick renormalization: $\mathfrak{f}^2 \rightsquigarrow \mathfrak{v}$. Using (3.11) and Lemma 2.6, it is easy to see that $\mathcal{R}_2 \in C(\mathbb{R}_+; C^\infty(\mathbb{T}^3))$ almost surely, since $|n| \sim 1$.

In the following, our main goal is to show

$$\mathbb{E}[|\widehat{\mathcal{R}}_1(n, t)|^2] \leq C(t)\langle n \rangle^{-3+}. \tag{4.2}$$

Then, Lemma 2.6 allows us to conclude that $\mathcal{R}_1(t) \in W^{0-, \infty}(\mathbb{T}^3)$ almost surely. We decompose \mathcal{R}_1 as

$$\begin{aligned}
\widehat{\mathcal{R}}_1(n, t) &= \sum_{\substack{n=n_1+n_2+n_3 \\ |n_1+n_2| \sim |n_3| \\ (n_1+n_2)(n_2+n_3)(n_3+n_1) \neq 0}} \int_0^t \frac{\sin((t-t')\langle n_1+n_2 \rangle)}{\langle n_1+n_2 \rangle} \widehat{\mathfrak{I}}(n_1, t') \widehat{\mathfrak{I}}(n_2, t') dt' \cdot \widehat{\mathfrak{I}}(n_3, t) \\
&+ 2 \int_0^t \widehat{\mathfrak{I}}(n, t') \left[\sum_{\substack{n_2 \in \mathbb{Z}^3 \\ |n_2| \sim |n+n_2| \neq 0}} \frac{\sin((t-t')\langle n+n_2 \rangle)}{\langle n+n_2 \rangle} \right. \\
&\quad \left. \times \left(\widehat{\mathfrak{I}}(n_2, t') \widehat{\mathfrak{I}}(-n_2, t) - \sigma_{n_2}(t, t') \right) \right] dt' \\
&+ 2 \int_0^t \widehat{\mathfrak{I}}(n, t') \left[\sum_{\substack{n_2 \in \mathbb{Z}^3 \\ |n_2| \sim |n+n_2| \neq 0}} \frac{\sin((t-t')\langle n+n_2 \rangle)}{\langle n+n_2 \rangle} \sigma_{n_2}(t, t') \right] dt' \\
&- \mathbf{1}_{n \neq 0} \int_0^t \frac{\sin((t-t')\langle 2n \rangle)}{\langle 2n \rangle} (\widehat{\mathfrak{I}}(n, t'))^2 dt' \cdot \widehat{\mathfrak{I}}(-n, t) \\
&=: \widehat{\mathcal{R}}_{11}(n, t) + \widehat{\mathcal{R}}_{12}(n, t) + \widehat{\mathcal{R}}_{13}(n, t) + \widehat{\mathcal{R}}_{14}(n, t). \tag{4.3}
\end{aligned}$$

Here, the second term \mathcal{R}_{12} corresponds to the ‘‘renormalized’’ contribution from $n_1 + n_3 = 0$ or $n_2 + n_3 = 0$, while the fourth term corresponds to the contribution from $n_1 = n_2 = n = -n_3$.

From (3.1), we have

$$\mathbb{E}[|\widehat{\mathcal{R}}_{14}(n, t)|^2] \leq C(t) \langle n \rangle^{-8},$$

satisfying (4.2). Under $|n + n_2| \sim |n_2|$, we have $|n_2| \gtrsim |n|$. Then, using a variant of (3.11), we obtain

$$\mathbb{E}[|\widehat{\mathcal{R}}_{12}(n, t)|^2] \leq C(t) \sum_{\substack{n_2 \in \mathbb{Z}^3 \\ |n+n_2| \sim |n_2|}} \frac{1}{\langle n \rangle^2 \langle n_2 \rangle^6} \lesssim \langle n \rangle^{-5},$$

satisfying (4.2).

Given $n \in \mathbb{Z}^3$, define $NR(n)$ by

$$\begin{aligned}
NR(n) &= \{ (n_1, n_2, n_3) \in \mathbb{Z}^3 : n = n_1 + n_2 + n_3, |n_1 + n_2| \sim |n_3|, \\
&\quad (n_1 + n_2)(n_2 + n_3)(n_3 + n_1) \neq 0 \}.
\end{aligned}$$

Then, with a shorthand notation $n_{ij} = n_i + n_j$, we have

$$\begin{aligned}
&\mathbb{E}[|\widehat{\mathcal{R}}_{11}(n, t)|^2] \\
&= \mathbb{E} \left[\sum_{(n_1, n_2, n_3) \in NR(n)} \int_0^t \frac{\sin((t-t_1)\langle n_{12} \rangle)}{\langle n_{12} \rangle} \widehat{\mathfrak{I}}(n_1, t_1) \widehat{\mathfrak{I}}(n_2, t_1) dt' \cdot \widehat{\mathfrak{I}}(n_3, t) \right. \\
&\quad \left. \times \sum_{(n'_1, n'_2, n'_3) \in NR(n)} \int_0^t \frac{\sin((t-t_2)\langle n'_{12} \rangle)}{\langle n'_{12} \rangle} \widehat{\mathfrak{I}}(n'_1, t_2) \widehat{\mathfrak{I}}(n'_2, t_2) dt' \cdot \widehat{\mathfrak{I}}(n'_3, t) \right].
\end{aligned}$$

In order to compute the expectation above, we need to take all possible pairings between (n_1, n_2, n_3) and (n'_1, n'_2, n'_3) . By Jensen’ inequality, however, we see that it suffices to consider

the case $n_j = n'_j$, $j = 1, 2, 3$. See the discussion on Ψ in Section 4 of [66]. See also Section 10 in [41]. Hence, by Wick's theorem and (3.10), we have

$$\mathbb{E}[|\widehat{\mathcal{R}}_{11}(n, t)|^2] \lesssim \sum_{\substack{n=m+n_3 \\ |m| \sim |n_3|}} \mathbb{E}[|\widehat{\Psi}(m, t)|^2] \mathbb{E}[|\widehat{\mathfrak{r}}(n_3, t)|^2]$$

From (3.2), (3.8), and Lemma 2.3 (ii),

$$\leq C(t) \sum_{\substack{n=m+n_3 \\ |m| \sim |n_3|}} \frac{1}{\langle m \rangle^{4-\langle n_3 \rangle^2}} \leq C(t) \langle n \rangle^{-3+},$$

verifying (4.2). Note that in evaluating the last sum, we crucially used the fact that the product is a resonant product.

It remains to study the third term $\widehat{\mathcal{R}}_{13}$ on the right-hand side of (4.3). Let $0 \leq t_2 \leq t_1 \leq T$. Then, from (4.3) with (1.32), we have

$$\begin{aligned} \mathbb{E}[|\widehat{\mathcal{R}}_{13}(n, t)|^2] &= 8 \sum_{k_0, k_1, k_2 \in \{1, 2\}} \int_0^t \int_0^{t_1} \sigma_n^{(k_0)}(t_1, t_2) \\ &\quad \times \left[\sum_{\substack{n_2 \in \mathbb{Z}^3 \\ |n_2| \sim |n+n_2| \neq 0}} \frac{\sin((t-t_1)\langle n+n_2 \rangle)}{\langle n+n_2 \rangle} \sigma_{n_2}^{(k_1)}(t, t_1) \right] \\ &\quad \times \left[\sum_{\substack{n'_2 \in \mathbb{Z}^3 \\ |n'_2| \sim |n+n'_2| \neq 0}} \frac{\sin((t-t_2)\langle n+n'_2 \rangle)}{\langle n+n'_2 \rangle} \sigma_{n'_2}^{(k_2)}(t, t_2) \right] dt_2 dt_1 \\ &=: \sum_{k_0, k_1, k_2 \in \{1, 2\}} \mathbb{I}^{(k_0, k_1, k_2)}(n, t) \end{aligned}$$

where $\sigma_n(t, t') = \sigma_n^{(1)}(t, t') + \sigma_n^{(2)}(t, t')$ as in (3.14). In the following, we only consider the contribution from $(k_0, k_1, k_2) = (1, 1, 1)$ since the other cases follow in a similar (but easier) manner.

From (3.14), we have

$$\begin{aligned} \mathbb{I}^{(1,1,1)}(n, t) &= \int_0^t \int_0^{t_1} \frac{\cos((t_1-t_2)\langle n \rangle)}{\langle n \rangle^2} t_2 \\ &\quad \times \left[\sum_{\substack{n_2 \in \mathbb{Z}^3 \\ |n_2| \sim |n+n_2| \neq 0}} \frac{\sin((t-t_1)\langle n+n_2 \rangle)}{\langle n+n_2 \rangle} \frac{\cos((t-t_1)\langle n_2 \rangle)}{\langle n_2 \rangle^2} t_1 \right] \\ &\quad \times \left[\sum_{\substack{n'_2 \in \mathbb{Z}^3 \\ |n'_2| \sim |n+n'_2| \neq 0}} \frac{\sin((t-t_2)\langle n+n'_2 \rangle)}{\langle n+n'_2 \rangle} \frac{\cos((t-t_2)\langle n'_2 \rangle)}{\langle n'_2 \rangle^2} t_2 \right] dt_2 dt_1 \\ &= -\frac{1}{32} \sum_{\substack{\varepsilon_j \in \{-1, 1\} \\ j=1, \dots, 5}} \sum_{\substack{n_2 \in \mathbb{Z}^3 \\ |n_2| \sim |n+n_2| \neq 0}} \sum_{\substack{n'_2 \in \mathbb{Z}^3 \\ |n'_2| \sim |n+n'_2| \neq 0}} \frac{\varepsilon_1 \varepsilon_2 e^{it(\varepsilon_1 \langle n+n_2 \rangle + \varepsilon_2 \langle n+n'_2 \rangle + \varepsilon_3 \langle n_2 \rangle + \varepsilon_4 \langle n'_2 \rangle)}}{\langle n \rangle^2 \langle n+n_2 \rangle \langle n_2 \rangle^2 \langle n+n'_2 \rangle \langle n'_2 \rangle^2} \\ &\quad \times \int_0^t t_1 e^{-it_1 \kappa_3(\bar{n})} \int_0^{t_1} t_2^2 e^{-it_2 \kappa_4(\bar{n}')} dt_2 dt_1, \end{aligned} \tag{4.4}$$

where $\kappa_3(\bar{n})$ and $\kappa_3(\bar{n}')$ are defined by

$$\begin{aligned}\kappa_3(\bar{n}) &= \varepsilon_1 \langle n + n_2 \rangle + \varepsilon_3 \langle n_2 \rangle - \varepsilon_5 \langle n \rangle, \\ \kappa_4(\bar{n}') &= \varepsilon_2 \langle n + n'_2 \rangle + \varepsilon_4 \langle n'_2 \rangle + \varepsilon_5 \langle n \rangle.\end{aligned}\tag{4.5}$$

Under the constraint $|n + n_2| \sim |n_2|$ and $|n + n'_2| \sim |n'_2|$, we have $|n_2|, |n'_2| \gtrsim |n|$. In the following, we also assume $|n_2| \gtrsim |n'_2|$.

We decompose $\mathbf{I}^{(1,1,1)}(n, t)$ according to the value of $\bar{\varepsilon} = (\varepsilon_1, \dots, \varepsilon_5) \in \{\pm 1\}^5$ and write

$$\mathbf{I}^{(1,1,1)}(n, t) =: \sum_{\bar{\varepsilon} \in \{\pm 1\}^5} \mathbf{I}_{\bar{\varepsilon}}^{(1,1,1)}(n, t).$$

In the following, we study $\mathbf{I}_{\bar{\varepsilon}}^{(1,1,1)}$ for each fixed $\bar{\varepsilon} \in \{\pm 1\}^5$. Note that the sum over n_2 and n'_2 in (4.4) are not absolutely convergent at a first glance. In many cases, we make use of dispersion (i.e. time oscillation) and show that they are indeed absolutely convergent. In Case 3 below, however, there is a subcase, where we show that the sum is only conditionally convergent. In this case, it is understood that the sum is first studied under the constraint $|n_2|, |n'_2| \leq N$ for some $N \geq 1$ and that the sum remains bounded in taking a limit $N \rightarrow \infty$. We do not mention this procedure in an explicit manner in the following.

By first integrating (4.4) in t_1 when $|\kappa_3(\bar{n})| \geq 1$ and simply bounding the integral in (4.4) by $C(T)$ when $|\kappa_3(\bar{n})| < 1$, we have

$$\begin{aligned}|\mathbf{I}_{\bar{\varepsilon}}^{(1,1,1)}(n, t)| &\leq \frac{C(T)}{\langle n \rangle^2} \sum_{\substack{n_2 \in \mathbb{Z}^3 \\ |n+n_2| \sim |n_2|}} \frac{1}{\langle n + n_2 \rangle \langle n_2 \rangle^2 (1 + |\kappa_3(\bar{n})|)} \\ &\times \sum_{\substack{n'_2 \in \mathbb{Z}^3 \\ |n+n'_2| \sim |n'_2|}} \frac{\mathbf{1}_{\{|n_2| \gtrsim |n'_2|\}}}{\langle n + n'_2 \rangle \langle n'_2 \rangle^2}.\end{aligned}\tag{4.6}$$

• **Case 1:** $(\varepsilon_1, \varepsilon_3, \varepsilon_5) = (\pm 1, \pm 1, \mp 1)$. In this case, it follows from (4.5) that $|\kappa_3(\bar{n})| \gtrsim \langle n_2 \rangle$. By writing $(1 + |\kappa_3(\bar{n})|)^{-1} \lesssim \langle n \rangle^{-1+2\delta} \langle n_2 \rangle^{-\delta} \langle n'_2 \rangle^{-\delta}$ in (4.6) for sufficiently small $\delta > 0$ and applying Lemma 2.3, we obtain

$$|\mathbf{I}_{\bar{\varepsilon}}^{(1,1,1)}(n, t)| \leq C(T) \langle n \rangle^{-3}.\tag{4.7}$$

• **Case 2:** $(\varepsilon_1, \varepsilon_3, \varepsilon_5) = (\pm 1, \pm 1, \pm 1)$. If $|n + n_2| \sim |n_2| \gg |n|$, then we have $|\kappa_3(\bar{n})| \gtrsim \langle n_2 \rangle$ and hence (4.7) holds as above. Otherwise, we have $|n + n_2| \sim |n_2| \sim |n|$. In this case, by $\langle n \rangle^{-2\delta} \lesssim \langle n_2 \rangle^{-\delta} \langle n'_2 \rangle^{-\delta}$ for $\delta > 0$. Then, we have

$$\begin{aligned}|\mathbf{I}_{\bar{\varepsilon}}^{(1,1,1)}(n, t)| &\leq \frac{C(T)}{\langle n \rangle^{2-2\delta}} \sum_{\substack{n_2 \in \mathbb{Z}^3 \\ |n+n_2| \sim |n_2|}} \frac{1}{\langle n + n_2 \rangle \langle n_2 \rangle^{2+\delta} (1 + |\kappa_3(\bar{n})|)} \\ &\times \sum_{\substack{n'_2 \in \mathbb{Z}^3 \\ |n+n'_2| \sim |n'_2|}} \frac{\mathbf{1}_{\{|n_2| \gtrsim |n'_2|\}}}{\langle n + n'_2 \rangle \langle n'_2 \rangle^{2+\delta}} \\ &\leq \frac{C(T)}{\langle n \rangle^{2-\delta}} \sum_{\substack{n_2 \in \mathbb{Z}^3 \\ |n+n_2| \sim |n_2|}} \frac{1}{\langle n + n_2 \rangle \langle n_2 \rangle^{2+\delta} (1 + |\kappa_3(\bar{n})|)}.\end{aligned}\tag{4.8}$$

We can now proceed as in Case 3 of the proof of Proposition 1.6 by replacing (n, n_1, n_2) with $(n, n + n_2, -n_2)$. In particular, from (3.23), we have

$$|\kappa_3(\bar{n})| \gtrsim |n_2|(1 - \cos \theta) \quad (4.9)$$

where $\theta = \angle(n + n_2, -n_2) \in [0, \pi]$ is the angle between $n + n_2$ and $-n_2$. When $1 - \cos \theta \gtrsim 1$, by summing over n_2 in (4.8) with (4.9) and Lemma 2.3, we obtain (4.7).

Next, consider the case $1 - \cos \theta \sim \theta^2 \ll 1$. Since $n = (n + n_2) + (-n_2)$, we see that the angle $\theta_0 = \angle(n, -n_2)$ between n and $-n_2$ is smaller than $\theta = \angle(n + n_2, -n_2)$ in this case. Moreover, we see that for fixed $n \in \mathbb{Z}^3$, the range of possible $-n_2$ with $|n_2| \sim N_2$, dyadic $N_2 \geq 1$, is constrained to a cone whose height is $\sim N_2 |\cos \theta_0| \sim N_2$ and the base disc of radius $\sim N_2 \sin \theta_0 \lesssim N_2 \theta$. Then, from (4.8) and (4.9) with $|n + n_2| \sim |n_2| \sim |n|$, we have

$$\begin{aligned} |\mathbf{I}_{\bar{\varepsilon}}^{(1,1,1)}(n, t)| &\leq \frac{C(T)}{\langle n \rangle^{2-\delta}} \sum_{\substack{N_2 \sim \langle n \rangle \\ \text{dyadic}}} \frac{1}{N_2^{4+\delta} \theta^2} N_2^3 \theta^2 \\ &\leq C(T) \langle n \rangle^{-3+\delta}, \end{aligned}$$

yielding (4.7).

• **Case 3:** $\varepsilon_1 = -\varepsilon_3$. First, suppose that $|n| \geq |n_2|^\gamma$ for some small $\gamma > 0$ (to be chosen later). Then, with $\langle n \rangle^{-2\delta} \lesssim \langle n_2 \rangle^{-\gamma\delta} \langle n'_2 \rangle^{-\gamma\delta}$ for $\lambda > 0$, we can proceed as in Case 2 (but using the computation in Case 2 of the proof of Proposition 1.6 by replacing (n, n_1, n_2) with $(n, n + n_2, -n_2)$ or $(n, -n_2, n + n_2)$) and obtain

$$\begin{aligned} |\mathbf{I}_{\bar{\varepsilon}}^{(1,1,1)}(n, t)| &\leq \frac{C(T)}{\langle n \rangle^{2-2\delta}} \sum_{\substack{n_2 \in \mathbb{Z}^3 \\ |n+n_2| \sim |n_2|}} \frac{1}{\langle n + n_2 \rangle \langle n_2 \rangle^{2+\gamma\delta} (1 + |\kappa_3(\bar{n})|)} \\ &\quad \times \sum_{\substack{n'_2 \in \mathbb{Z}^3 \\ |n+n'_2| \sim |n'_2|}} \frac{\mathbf{1}_{\{|n_2| \gtrsim |n'_2|\}}}{\langle n + n'_2 \rangle \langle n'_2 \rangle^{2+\gamma\delta}} \\ &\leq C(T) \langle n \rangle^{-3+(2-\gamma)\delta}, \end{aligned}$$

verifying (4.2) by choosing $\delta > 0$ sufficiently small.

Next, we consider the case $|n| \ll |n_2|^\gamma$. In this case, we are not able to prove absolute summability in (4.6) since $\kappa_3(\bar{n})$ does not have any good lower bound, and thus we need to proceed more carefully. By writing out the contribution from the sum over n_2 in (4.4) (namely, ignoring the sum over n'_2), we have

$$\int_0^t t_1 e^{it_1 \varepsilon_5(n)} \sum_{\substack{n_2 \in \mathbb{Z}^3 \\ |n+n_2| \sim |n_2| \\ |n| \ll |n_2|^\gamma}} \frac{\sin((t-t_1)(\langle n+n_2 \rangle - \langle n_2 \rangle))}{\langle n \rangle^2 \langle n+n_2 \rangle \langle n_2 \rangle^2} dt_1. \quad (4.10)$$

By going back to the definition (1.22) of the resonant product \ominus , we can write down the sum over n_2 in (4.10) as

$$\sum_{j \in \mathbb{N}_0} \sum_{\substack{n_2 \in \mathbb{Z}^3 \\ |n| \ll |n_2|^\gamma}} \varphi_j(n_2) \sum_{|k-j| \leq 2} \varphi_k(n + n_2), \quad (4.11)$$

where φ_j is as in (2.1). Thanks to the restriction $|n| \ll |n_2|^\gamma$ with small $\gamma > 0$, the sum in (4.11) is in fact given by

$$\sum_{j \in \mathbb{N}_0} \sum_{\substack{n_2 \in \mathbb{Z}^3 \\ |n| \ll |n_2|^\gamma}} \varphi_j(n_2). \quad (4.12)$$

While the sum over n_2 in (4.10) is not absolutely convergent, we do not expect to gain anything from the time integration in t_1 in this case due to the lack of a good lower bound on $\kappa_3(\bar{n})$. The reduction to (4.12), however, allows us to exploit the symmetry $n_2 \leftrightarrow -n_2$ and the oscillatory nature of the sine kernel in (4.10).

By the Taylor remainder theorem, we have

$$\Theta^\pm(n, n_2) := \langle n \pm n_2 \rangle - \langle n_2 \rangle \mp \frac{\langle n, n_2 \rangle}{\langle n_2 \rangle} = O\left(\frac{\langle n \rangle^2}{\langle n_2 \rangle}\right). \quad (4.13)$$

Let Λ be the index set “ $\sim \mathbb{Z}^3/2$ ” in (1.7). Then, with (4.13) and the mean value theorem, we have

$$\begin{aligned} (4.10) &= \int_0^t t_1 e^{it_1 \varepsilon_5 \langle n \rangle} \sum_{j \in \mathbb{N}_0} \sum_{\substack{n_2 \in \mathbb{Z}^3 \\ |n| \ll |n_2|^\gamma}} \varphi_j(n_2) \frac{\sin((t-t_1)(\langle n+n_2 \rangle - \langle n_2 \rangle))}{\langle n \rangle^2 \langle n+n_2 \rangle \langle n_2 \rangle^2} dt_1 \\ &= \int_0^t t_1 e^{it_1 \varepsilon_5 \langle n \rangle} \sum_{j \in \mathbb{N}_0} \sum_{\substack{n_2 \in \Lambda \\ |n| \ll |n_2|^\gamma}} \frac{\varphi_j(n_2)}{\langle n \rangle^2 \langle n+n_2 \rangle \langle n_2 \rangle^2} \\ &\quad \times \left\{ \sin((t-t_1)(\langle n+n_2 \rangle - \langle n_2 \rangle)) + \sin((t-t_1)(\langle n-n_2 \rangle - \langle n_2 \rangle)) \right\} dt_1 \\ &= \int_0^t t_1 e^{it_1 \varepsilon_5 \langle n \rangle} \sum_{j \in \mathbb{N}_0} \sum_{\substack{n_2 \in \Lambda \\ |n| \ll |n_2|^\gamma}} \frac{\varphi_j(n_2)}{\langle n \rangle^2 \langle n+n_2 \rangle \langle n_2 \rangle^2} \\ &\quad \times \left\{ \sin\left((t-t_1)\left(\frac{\langle n, n_2 \rangle}{\langle n_2 \rangle} + \Theta^+(n, n_2)\right)\right) \right. \\ &\quad \left. - \sin\left((t-t_1)\left(\frac{\langle n, n_2 \rangle}{\langle n_2 \rangle} - \Theta^-(n, n_2)\right)\right) \right\} dt_1 \\ &\leq C(T) \sum_{j \in \mathbb{N}_0} \sum_{\substack{n_2 \in \Lambda \\ |n| \ll |n_2|^\gamma}} \frac{\varphi_j(n_2)}{\langle n \rangle^2 \langle n+n_2 \rangle \langle n_2 \rangle^2} \frac{\langle n \rangle^{4\delta}}{\langle n_2 \rangle^{2\delta}} \\ &\leq \frac{C(T)}{\langle n'_2 \rangle^\delta} \sum_{\substack{n_2 \in \Lambda \\ |n| \ll |n_2|^\gamma}} \frac{1}{\langle n \rangle^{2-4\delta} \langle n_2 \rangle^{3+\delta}} \end{aligned}$$

for any $\delta \in [0, \frac{1}{2}]$. Fix small $\delta > 0$. By applying Lemma 2.3 to sum over n_2 and n'_2 and then using the condition $|n| \ll |n_2|^\gamma$, we obtain

$$|\mathbb{I}_{\bar{\varepsilon}}^{(1,1,1)}(n, t)| \leq \frac{C(T)}{\langle n \rangle^{2-3\delta}} \cdot \frac{1}{\langle n \rangle^{\frac{\delta}{\gamma}}} \leq C(T) \langle n \rangle^{-3}$$

by choosing $\gamma = \gamma(\delta) > 0$ sufficiently small. This proves (4.2).

Next, we briefly discuss the difference estimate. In view of Lemma 2.6, we need to show that there exists $\sigma \in (0, 1)$ such that

$$\mathbb{E}[|\widehat{\mathcal{R}}_1(n, t_1) - \widehat{\mathcal{R}}_1(n, t_2)|^2] \leq C(T) \langle n \rangle^{-3+\sigma} |t_1 - t_2|^\sigma \quad (4.14)$$

for any $n \in \mathbb{Z}^3$, $0 \leq t, t_1, t_2 \leq T$ with $0 < |t_1 - t_2| < 1$. As in (3.24), we need to estimate

$$\mathbb{E}[|\widehat{\mathcal{R}}_1(n, t_1) - \widehat{\mathcal{R}}_1(n, t_2)|^2] = \sum_{j=1}^2 (-1)^{j+1} \mathbb{E}[(\widehat{\mathcal{R}}_1(n, t_1) - \widehat{\mathcal{R}}_1(n, t_2)) \overline{\widehat{\mathcal{G}}(n, t_j)}]. \quad (4.15)$$

As for \mathcal{R}_{11} , \mathcal{R}_{12} , and \mathcal{R}_{14} in (4.3), we can crudely estimate them and obtain

$$\mathbb{E}[|\widehat{\mathcal{R}}_{1j}(n, t_1) - \widehat{\mathcal{R}}_{1j}(n, t_2)|^2] \lesssim C(T) \langle n \rangle^{-2+} |t_1 - t_2|, \quad (4.16)$$

for $j = 1, 2, 4$, since the relevant summations are absolutely convergent. Then, (4.14) follows from interpolating (4.16) and

$$\mathbb{E}[|\widehat{\mathcal{R}}_{1j}(n, t_1) - \widehat{\mathcal{R}}_{1j}(n, t_2)|^2] \lesssim C(T) \langle n \rangle^{-3+}.$$

It remains to discuss \mathcal{R}_{13} . In view of (4.4) and (4.15), we need to consider an expression like

$$\begin{aligned} & \int_0^{t_2} \int_0^{\tau_1} \frac{\cos((\tau_1 - \tau_2) \langle n \rangle)}{\langle n \rangle^2} \tau_2 \left[\sum_{\substack{n_2 \in \mathbb{Z}^3 \\ |n+n_2| \sim |n_2|}} \frac{\sin((t - \tau_1) \langle n + n_2 \rangle)}{\langle n + n_2 \rangle} \frac{\cos((t - \tau_1) \langle n_2 \rangle)}{\langle n_2 \rangle^2} \tau_1 \right] \Big|_{t=t_2}^{t_1} \\ & \times \left[\sum_{\substack{n'_2 \in \mathbb{Z}^3 \\ |n+n'_2| \sim |n'_2|}} \frac{\sin((t_j - \tau_2) \langle n + n'_2 \rangle)}{\langle n + n'_2 \rangle} \frac{\cos((t_j - \tau_2) \langle n'_2 \rangle)}{\langle n'_2 \rangle^2} \tau_2 \right] d\tau_2 d\tau_1 \end{aligned}$$

for $0 \leq \tau_2 \leq \tau_1 \leq T$. Then, by repeating the computations in Cases 1 - 3 above and applying the mean value theorem, we directly obtain (4.14). Note that some of the relevant summations are not absolutely convergent in this case and hence we can not proceed with a crude estimate and interpolation. Compare this with the parabolic setting. See Section 5 in [66].

This completes the proof of Proposition 1.8.

5. PARACONTROLLED OPERATORS

We first present the proof of Lemma 1.9 on the regularity of $Z = (S(t)(X_0, X_1)) \ominus \dagger$.

Proof of Lemma 1.9. Let $H(t) = S(t)(X_0, X_1)$. Under $n = n_1 + n_2$ and $|n_1| \sim |n_2|$, we have $\langle n \rangle \lesssim \langle n_1 \rangle \sim \langle n_2 \rangle$. Then, it follows from Minkowski's integral inequality, the Wiener chaos estimate (Lemma 2.5), independence of $\widehat{\mathfrak{r}}(n_2, t)$, and (3.2) that for any $p \geq 2$, we have

$$\begin{aligned} \left\| \|Z(t)\|_{H^s} \right\|_{L^p(\Omega)} & \leq \left\| \|\langle n \rangle^s \mathcal{F}_x(H \ominus \dagger)(n, t)\|_{L^p(\Omega)} \right\|_{\ell_n^2} \\ & \leq p^{\frac{1}{2}} \left\| \|\langle n \rangle^s \mathcal{F}_x(H \ominus \dagger)(n, t)\|_{L^2(\Omega)} \right\|_{\ell_n^2} \\ & \sim p^{\frac{1}{2}} \left(\sum_{n \in \mathbb{Z}^3} \langle n \rangle^{2s} \sum_{\substack{n=n_1+n_2 \\ |n_1| \sim |n_2|}} |\widehat{H}(n_1, t)|^2 \mathbb{E}[\widehat{\mathfrak{r}}(n_2, t)^2] \right)^{\frac{1}{2}} \\ & \lesssim p^{\frac{1}{2}} \left(\sum_{n \in \mathbb{Z}^3} \langle n \rangle^{2(s-s_1-1)} \sum_{n_1 \in \mathbb{Z}^3} \langle n_1 \rangle^{2s_1} |\widehat{H}(n_1, t)|^2 \right)^{\frac{1}{2}} \\ & \lesssim p^{\frac{1}{2}} \|(X_0, X_1)\|_{\mathcal{H}^{s_1}} \end{aligned} \quad (5.1)$$

provided that $s < s_1 - \frac{1}{2}$. Fix $\varepsilon > 0$ small. Then, by writing

$$(H \ominus \uparrow)(t_1) - (H \ominus \uparrow)(t_2) = H(t_1) \ominus (\uparrow(t_1) - \uparrow(t_2)) + (H(t_1) - H(t_2)) \ominus \uparrow(t_2)$$

for $0 \leq t_2 \leq t_1$, we can repeat the computation in (5.1). In particular, by (3.4) and the mean value theorem, we obtain

$$\begin{aligned} & \left\| \|(H \ominus \uparrow)(t_1) - (H \ominus \uparrow)(t_2)\|_{H^s} \right\|_{L^p(\Omega)} \\ & \lesssim C(t_2) p^{\frac{1}{2}} |t_1 - t_2|^{\frac{\varepsilon}{2}} \|(X_0, X_1)\|_{\mathcal{H}^{s_1}} + p^{\frac{1}{2}} \|H(t_1) - H(t_2)\|_{H^{s_1 - \frac{\varepsilon}{2}}} \\ & \lesssim C(t_2) p^{\frac{1}{2}} |t_1 - t_2|^{\frac{\varepsilon}{2}} \|(X_0, X_1)\|_{\mathcal{H}^{s_1}}, \end{aligned}$$

provided that $s < s_1 - \frac{1}{2} - \frac{\varepsilon}{2}$. Therefore, by taking large $p = p(\varepsilon) \gg 1$, we conclude from Kolmogorov's continuity criterion ([6, Theorem 8.2]) that Z belongs to $C([0, T]; H^{s_1 - \frac{1}{2} - \varepsilon}(\mathbb{T}^3))$ almost surely. \square

The remaining part of this section is devoted to studying the mapping properties of the paracontrolled operators $\mathfrak{J}_{\ominus}^{(1)}$ in (1.29) and $\mathfrak{J}_{\ominus, \ominus}$ in (1.30).

We first study the regularity property of the paracontrolled operator $\mathfrak{J}_{\ominus}^{(1)}$ defined in (1.29). By writing out the frequency relation $|n_2|^\theta \lesssim |n_1| \ll |n_2|$ more carefully, we have

$$\begin{aligned} \mathfrak{J}_{\ominus}^{(1)}(w)(t) &= \sum_{n \in \mathbb{Z}^3} e_n \sum_{n=n_1+n_2} \sum_{\theta k + c_0 \leq j < k-2} \varphi_j(n_1) \varphi_k(n_2) \\ & \times \int_0^t \frac{\sin((t-t')\langle n \rangle)}{\langle n \rangle} \widehat{w}(n_1, t') \widehat{\uparrow}(n_2, t') dt', \end{aligned} \quad (5.2)$$

where $c_0 \in \mathbb{R}$ is some fixed constant. In the following, we establish the mapping property of $\mathfrak{J}_{\ominus}^{(1)}$ in a deterministic manner by using a pathwise regularity of the stochastic convolution \uparrow .

Given $\Xi \in C(\mathbb{R}_+; W^{-\frac{1}{2} - \varepsilon}(\mathbb{T}^3))$ for some small $\varepsilon > 0$, define a paracontrolled operator $\mathfrak{J}_{\ominus}^{(1), \Xi}$ by

$$\begin{aligned} \mathfrak{J}_{\ominus}^{(1), \Xi}(w)(t) &:= \sum_{n \in \mathbb{Z}^3} e_n \sum_{n=n_1+n_2} \sum_{\theta k + c_0 \leq j < k-2} \varphi_j(n_1) \varphi_k(n_2) \\ & \times \int_0^t \frac{\sin((t-t')\langle n \rangle)}{\langle n \rangle} \widehat{w}(n_1, t') \widehat{\Xi}(n_2, t') dt'. \end{aligned} \quad (5.3)$$

Note that we have $\mathfrak{J}_{\ominus}^{(1)} = \mathfrak{J}_{\ominus}^{(1), \uparrow}$, i.e. with $\Xi = \uparrow$.

Lemma 5.1. *Let $0 < s_1 < \frac{1}{2}$ and $T > 0$. Then, given small $\theta > 0$, there exists small $\varepsilon = \varepsilon(s_1, \theta) > 0$ such that given $\Xi \in C(\mathbb{R}_+; W^{-\frac{1}{2} - \varepsilon, \infty}(\mathbb{T}^3))$, the paracontrolled operator $\mathfrak{J}_{\ominus}^{(1), \Xi}$ defined in (5.3) belongs to the class:*

$$\mathcal{L}_2 = \mathcal{L}(C([0, T]; H^{s_1}(\mathbb{T}^3)); C([0, T]; H^{\frac{1}{2} + 2\varepsilon}(\mathbb{T}^3))). \quad (5.4)$$

As a direct consequence of Lemma 5.1 with Lemma 3.1, we obtain the following corollary for the paracontrolled operator $\mathfrak{J}_{\ominus}^{(1)}$ defined in (1.29) (and (5.2)).

Corollary 5.2. *Let $0 < s_1 < \frac{1}{2}$ and $T > 0$. Then, given small $\theta > 0$, there exists small $\varepsilon = \varepsilon(s_1, \theta) > 0$ such that the paracontrolled operator $\mathfrak{J}_{\ominus}^{(1)}$ defined in (1.29) belongs to \mathcal{L}_2 in (5.4) almost surely. Moreover, by letting $\mathfrak{J}_{\ominus}^{(1), N}$, $N \in \mathbb{N}$, denote the paracontrolled operator in (1.29) with \uparrow replaced by the truncated stochastic convolution \uparrow_N in (1.18), the truncated paracontrolled operator $\mathfrak{J}_{\ominus}^{(1), N}$ converges almost surely to $\mathfrak{J}_{\ominus}^{(1)}$ in \mathcal{L}_2 .*

Proof of Lemma 5.1. Let $s_1 > 0$. Under $|n_2|^\theta \lesssim |n_1| \ll |n_2|$ with $n = n_1 + n_2$, we have

$$\langle n \rangle^{\frac{1}{2}+2\varepsilon} \frac{1}{\langle n \rangle} \lesssim \langle n_1 \rangle^{\frac{4\varepsilon}{\theta}} \langle n_2 \rangle^{-\frac{1}{2}-2\varepsilon} \lesssim \langle n_1 \rangle^{s_1-\varepsilon} \langle n_2 \rangle^{-\frac{1}{2}-2\varepsilon} \quad (5.5)$$

by choosing $\varepsilon = \varepsilon(s_1, \theta) > 0$ sufficiently small.

Let $\widehat{w}_j(n_1, t') = \varphi_j(n_1) \widehat{w}(n_1, t')$ and $\widehat{\Xi}_k(n_2, t') = \varphi_k(n_2) \widehat{\Xi}(n_2, t')$. Then, from (5.3) and (5.5), we have

$$\begin{aligned} \|\mathfrak{J}_{\otimes}^{(1), \Xi}(w)(t)\|_{H^{\frac{1}{2}+2\varepsilon}} &\lesssim \int_0^t \sum_{j,k=0}^{\infty} 2^{(s_1-\varepsilon)j} 2^{(-\frac{1}{2}-2\varepsilon)k} \left\| \sum_{n=n_1+n_2} \widehat{w}_j(n_1, t') \widehat{\Xi}_k(n_2, t') \right\|_{\ell_n^2} dt' \\ &\lesssim \int_0^t \sum_{j,k=0}^{\infty} 2^{(s_1-\varepsilon)j} 2^{(-\frac{1}{2}-2\varepsilon)k} \|w_j(t')\|_{L_x^2} \|\Xi_k(t')\|_{L_x^\infty} dt'. \end{aligned}$$

Then, by summing over dyadic blocks and applying the trivial embedding (2.5), we obtain

$$\begin{aligned} \|\mathfrak{J}_{\otimes}^{(1), \Xi}(w)(t)\|_{H^{\frac{1}{2}+2\varepsilon}} &\lesssim T \|w\|_{L_T^\infty H_x^{s_1}} \|\Xi\|_{L_T^\infty (B_{\infty,1}^{-\frac{1}{2}-2\varepsilon})_x} \\ &\lesssim T \|w\|_{L_T^\infty H_x^{s_1}} \|\Xi\|_{L_T^\infty W_x^{-\frac{1}{2}-\varepsilon, \infty}} \end{aligned}$$

for any $t \in [0, T]$. The continuity in time of $\mathfrak{J}_{\otimes}^{(1), \Xi}(w)$ follows from modifying the computation above as in the previous subsections. We omit the details. \square

Finally, we present the proof of Proposition 1.11 on the paracontrolled operator $\mathfrak{J}_{\otimes, \otimes}$ in (1.30). By writing out the frequency relations more carefully as in (5.2), we have

$$\mathfrak{J}_{\otimes, \otimes}(w)(t) = \sum_{n \in \mathbb{Z}^3} e_n \int_0^t \sum_{j=0}^{\infty} \sum_{n_1 \in \mathbb{Z}^3} \varphi_j(n_1) \widehat{w}(n_1, t') \mathcal{A}_{n, n_1}(t, t') dt', \quad (5.6)$$

where $\mathcal{A}_{n, n_1}(t, t')$ is given by

$$\begin{aligned} \mathcal{A}_{n, n_1}(t, t') &= \mathbf{1}_{[0, t]}(t') \sum_{\substack{k=0 \\ j \leq \theta k + c_0}}^{\infty} \sum_{\substack{\ell, m=0 \\ |\ell-m| \leq 2}}^{\infty} \sum_{n-n_1=n_2+n_3} \varphi_k(n_2) \varphi_\ell(n_1+n_2) \varphi_m(n_3) \\ &\quad \times \frac{\sin((t-t') \langle n_1+n_2 \rangle)}{\langle n_1+n_2 \rangle} \widehat{\mathfrak{r}}(n_2, t') \widehat{\mathfrak{r}}(n_3, t). \end{aligned} \quad (5.7)$$

For ease of notation, however, we simply use (1.30) and (1.31) in the following, with the understanding that the frequency relations $|n_1| \ll |n_2|^\theta$ and $|n_1+n_2| \sim |n_3|$ are indeed characterized by the use of smooth frequency cutoff functions as in (5.6) and (5.7). Moreover, we drop the cutoff function $\mathbf{1}_{[0, t]}(t')$ in the following with the understanding that $0 \leq t' \leq t$.

Proof of Proposition 1.11. We separately consider the contributions to $\mathfrak{J}_{\otimes, \otimes}$ from $\mathcal{A}_{n, n_1}^{(1)}$ and $\mathcal{A}_{n, n_1}^{(2)}$ defined in (1.33) and denote them respectively $\mathfrak{J}_{\otimes, \otimes}^{(1)}(w)$ and $\mathfrak{J}_{\otimes, \otimes}^{(2)}(w)$.

Given dyadic $N_2 \geq 1$, let $\mathcal{A}_{n,n_1,N_2}^{(1)}(t,t')$ be the contribution to $\mathcal{A}_{n,n_1}^{(1)}(t,t')$ from $\{|n_2| \sim N_2\}$.²¹ Fix $0 \leq t \leq T$. Then, from (1.30) and (1.33), we have

$$\begin{aligned} \|\mathfrak{J}_{\otimes,\otimes}^{(1)}(w)(t)\|_{H^{s_2-1}} &\leq \left\| \int_0^t \langle n \rangle^{s_2-1} \sum_{n_1 \in \mathbb{Z}^3} \widehat{w}(n_1, t') \mathcal{A}_{n,n_1}^{(1)}(t, t') dt' \right\|_{\ell_n^2} \\ &\lesssim T^{\frac{1}{2}} \|w\|_{L_t^\infty L_x^2} \|\langle n \rangle^{s_2-1} \mathcal{A}_{n,n_1}^{(1)}(t, t')\|_{L_{t'}^2([0,T]; \ell_{n,n_1}^2)} \\ &\lesssim T^{\frac{1}{2}} \|w\|_{L_t^\infty L_x^2} \sum_{\substack{N_2 \geq 1 \\ \text{dyadic}}} \|\langle n \rangle^{s_2-1} \mathcal{A}_{n,n_1,N_2}^{(1)}(t, t')\|_{L_{t'}^2([0,T]; \ell_{n,n_1}^2)} \\ &\lesssim T^{\frac{1}{2}} \|w\|_{L_t^\infty L_x^2} \|\mathcal{A}^{(1)}(t, \cdot)\|_{\mathcal{A}(T)}, \end{aligned}$$

where we introduced the norm:

$$\|\mathcal{A}^{(1)}(t, \cdot)\|_{\mathcal{A}(T)} := \left(\sum_{\substack{N_2 \geq 1 \\ \text{dyadic}}} N_2^\delta \|\langle n \rangle^{s_2-1} \mathcal{A}_{n,n_1,N_2}^{(1)}(t, t')\|_{L_{t'}^2([0,T]; \ell_{n,n_1}^2)}^2 \right)^{\frac{1}{2}}. \quad (5.8)$$

Remark 5.3. For fixed $t, t' \in [0, T]$, set $\mathcal{T}_{t,t'}(f) = \sum_{n_1 \in \mathbb{Z}^3} \widehat{f}(n_1) \mathcal{A}_{n,n_1}^{(1)}(t, t') e_n$. Then, the expression $\|\langle n \rangle^{s_2-1} \mathcal{A}_{n,n_1}^{(1)}(t, t')\|_{\ell_{n,n_1}^2}$ is nothing but the Hilbert-Schmidt norm of the operator $\mathcal{T}_{t,t'}$ from $L^2(\mathbb{T}^3)$ into $H^{s_2-1}(\mathbb{T}^3)$. Recalling that the Hilbert-Schmidt norm of a given operator controls its operator norm, it is natural to work with the $\mathcal{A}(T)$ -norm of $\mathcal{A}^{(1)}(t, \cdot)$ defined above (which is conveniently modified to carry out analysis on each dyadic block $\{|n_2| \sim N_2\}$).

By a similar argument, we obtain

$$\begin{aligned} \|\mathfrak{J}_{\otimes,\otimes}^{(1)}(w)(t_1) - \mathfrak{J}_{\otimes,\otimes}^{(1)}(w)(t_2)\|_{H^{s_2-1}} &\lesssim |t_1 - t_2|^{\frac{1}{2}} \|w\|_{L_t^\infty L_x^2} \|\mathcal{A}^{(1)}(t_1, \cdot)\|_{\mathcal{A}(T)} \\ &\quad + T^{\frac{1}{2}} \|w\|_{L_t^\infty L_x^2} \|\mathcal{A}^{(1)}(t_1, \cdot) - \mathcal{A}^{(1)}(t_2, \cdot)\|_{\mathcal{A}(T)} \end{aligned} \quad (5.9)$$

for $t_1, t_2 \in [0, T]$.

We now show that the random process $t \mapsto \mathcal{A}^{(1)}(t, \cdot)$ has almost surely continuous trajectories (in t) with respect to the Banach space generated by the norm $\|\cdot\|_{\mathcal{A}(T)}$. In order to do so, we apply Kolmogorov's continuity criterion and we need, as usual, to evaluate sufficiently high moments of the random variable $\mathcal{A}^{(1)}(t_1, \cdot) - \mathcal{A}^{(1)}(t_2, \cdot)$ with $t_1, t_2 \in [0, T]$.

Note that the conditions $|n_1| \ll |n_2|^\theta$ for some small $\theta > 0$ and $|n_1 + n_2| \sim |n_3|$ imply $|n_2| \sim |n_3| \gg |n_1|$. Moreover, with the condition $n - n_1 = n_2 + n_3$, we have $|n_2| \sim |n_3| \gtrsim |n|$.

²¹More precisely speaking, $\mathcal{A}_{n,n_1,N_2}^{(1)}(t,t')$ denotes the contribution in (5.7) from $2^k \sim N_2$.

Then, with (1.32), we have

$$\begin{aligned}
& \mathbb{E}[\|\mathcal{A}_{n,n_1,N_2}^{(1)}(t,t')\|_{L_{t'}^2([0,T])}^2] \\
& \leq \left\| \sum_{\substack{n-n_1=n_2+n_3 \\ |n_1| \ll |n_2|^\theta \\ |n_1+n_2| \sim |n_3| \\ |n_2| \sim N_2 \\ n_2+n_3 \neq 0}} \frac{|\sin((t-t')\langle n_1+n_2 \rangle)|^2}{\langle n_1+n_2 \rangle^2} \mathbb{E}[\widehat{\Gamma}(n_2,t')\widehat{\Gamma}(n_3,t)]^2 \right\|_{L_{t'}^2([0,T])}^2 \\
& \quad + \left\| \sum_{\substack{n_2 \in \mathbb{Z}^3 \\ |n| \ll |n_2|^\theta \\ |n_2| \sim N_2}} \frac{|\sin((t-t')\langle n+n_2 \rangle)|^2}{\langle n+n_2 \rangle^2} \mathbb{E}[\widehat{\Gamma}(n_2,t')\widehat{\Gamma}(-n_2,t) - \sigma_{n_2}(t,t')]^2 \right\|_{L_{t'}^2([0,T])}^2 \\
& \lesssim T \left\{ \sum_{\substack{n-n_1=n_2+n_3 \\ |n_1| \ll |n_2|^\theta \\ |n_1+n_2| \sim |n_3| \\ |n_2| \sim N_2 \\ n_1 \neq n}} \frac{1}{\langle n_2 \rangle^6} + \sum_{\substack{n_2 \in \mathbb{Z}^3 \\ |n| \ll |n_2|^\theta \\ |n_2| \sim N_2}} \frac{1}{\langle n+n_2 \rangle^2 \langle n_2 \rangle^4} \right\} \\
& \lesssim TN_2^{-3} \mathbf{1}_{|n_1| \ll N_2^\theta} \mathbf{1}_{|n| \lesssim N_2}. \tag{5.10}
\end{aligned}$$

Therefore, we obtain

$$\begin{aligned}
\mathbb{E}[\|\mathcal{A}^{(1)}(t,\cdot)\|_{\mathcal{A}(T)}^2] &= \sum_{\substack{N_2 \geq 1 \\ \text{dyadic}}} N_2^\delta \sum_{n,n_1} \langle n \rangle^{2s_2-2} \mathbb{E}[\|\mathcal{A}_{n,n_1,N_2}^{(1)}(t,t')\|_{L_{t'}^2([0,T])}^2] \\
&\leq \sum_{\substack{N_2 \geq 1 \\ \text{dyadic}}} N_2^{\delta-3} \sum_{n,n_1 \in \mathbb{Z}^3} \langle n \rangle^{2s_2-2} \mathbf{1}_{|n_1| \ll N_2^\theta} \mathbf{1}_{|n| \lesssim N_2} \\
&\leq \sum_{\substack{N_2 \geq 1 \\ \text{dyadic}}} N_2^{\delta+3\theta+2s_2-2} < \infty
\end{aligned} \tag{5.11}$$

by choosing $\delta = \delta(s_2) > 0$ and $\theta = \theta(s_2) > 0$ sufficiently small since $s_2 < 1$.

From (1.33), we have

$$\begin{aligned}
& \mathcal{A}_{n,n_1}^{(1)}(t_1,t') - \mathcal{A}_{n,n_1}^{(1)}(t_2,t') \\
&= \sum_{\substack{n-n_1=n_2+n_3 \\ |n_1| \ll |n_2|^\theta \\ |n_1+n_2| \sim |n_3|}} \frac{\sin((t_1-t')\langle n_1+n_2 \rangle) - \sin((t_2-t')\langle n_1+n_2 \rangle)}{\langle n_1+n_2 \rangle} B_{n_2,n_3}(t_1,t') \\
& \quad + \sum_{\substack{n-n_1=n_2+n_3 \\ |n_1| \ll |n_2|^\theta \\ |n_1+n_2| \sim |n_3|}} \frac{\sin((t_2-t')\langle n_1+n_2 \rangle)}{\langle n_1+n_2 \rangle} (B_{n_2,n_3}(t_1,t') - B_{n_2,n_3}(t_2,t'))
\end{aligned} \tag{5.12}$$

where $B_{n_2,n_3}(t,t') = \widehat{\Gamma}(n_2,t')\widehat{\Gamma}(n_3,t) - \mathbf{1}_{n_2+n_3=0} \cdot \sigma_{n_2}(t,t')$. Arguing as in (5.10) and (5.11), we obtain

$$\mathbb{E}[\|\mathcal{A}^{(1)}(t_1,\cdot) - \mathcal{A}^{(1)}(t_2,\cdot)\|_{\mathcal{A}(T)}^2] \lesssim |t_1 - t_2|^\sigma,$$

for some small $\sigma > 0$. Indeed, the first term on the right-hand side of (5.12) can be controlled by the mean value theorem, creating an additional factor of $\langle n_1+n_2 \rangle^\sigma |t_1 - t_2|^\sigma$. On the other

hand, by writing

$$\begin{aligned} B_{n_2, n_3}(t_1, t') - B_{n_2, n_3}(t_2, t') &= \widehat{\Gamma}(n_2, t')(\widehat{\Gamma}(n_3, t_1) - \widehat{\Gamma}(n_3, t_2)) \\ &\quad - \mathbb{E}\left[\widehat{\Gamma}(n_2, t')(\widehat{\Gamma}(-n_2, t_1) - \widehat{\Gamma}(-n_2, t_2))\right] \\ &\quad - \mathbf{1}_{n_2+n_3=0}\{\sigma_{n_2}(t_1, t') - \sigma_{n_2}(t_2, t')\}, \end{aligned}$$

we can apply (3.3) and the mean value theorem to create $|t_1 - t_2|^\sigma$ at the expense of losing a small power in n_2 or n_3 .

Finally, note that $\mathcal{A}_{n, n_1}^{(1)}$ is a homogenous Wiener chaos of order 2. Therefore by Minkowski's inequality and the Wiener chaos estimate (Lemma 2.5), we obtain

$$\mathbb{E}[\|\mathcal{A}^{(1)}(t_1, \cdot) - \mathcal{A}^{(1)}(t_2, \cdot)\|_{\mathcal{A}(T)}^p] \lesssim p^p |t_1 - t_2|^{\sigma p},$$

for any $p \geq 2$. Finally, by Kolmogorov's continuity criterion, we conclude that

$$\|\mathcal{A}^{(1)}(t_1, \cdot) - \mathcal{A}^{(1)}(t_2, \cdot)\|_{\mathcal{A}(T)} \leq C(\omega) |t_1 - t_2|^{\sigma-}, \quad (5.13)$$

for all $t_1, t_2 \in [0, T]$, where the constant $C = C(\omega)$ lies in $L^p(\Omega)$ for some large $p \gg 1$. From (5.9) and (5.13), we then deduce the required almost sure continuity for $\mathfrak{J}_{\otimes, \otimes}^{(1)}(w)$.

Next, we consider the contribution from $\mathcal{A}_{n, n_1}^{(2)}(t, t')$ in (1.33). This part is entirely deterministic. Since $\mathcal{A}_{n, n_1}^{(2)}(t, t') = 0$ unless $n = n_1$, we only consider $\mathcal{A}_{n, n}^{(2)}(t, t')$. In view of (3.14), we decompose $\mathcal{A}_{n, n}^{(2)}(t, t')$ as

$$\begin{aligned} \mathcal{A}_{n, n}^{(2)}(t, t') &= t' \sum_{\substack{n_2 \in \mathbb{Z}^3 \\ |n| \ll |n_2|^\theta}} \frac{\sin((t-t')\langle n+n_2 \rangle) \cos((t-t')\langle n \rangle)}{\langle n+n_2 \rangle} \frac{2\langle n \rangle}{2\langle n_2 \rangle^2} \\ &\quad + \sum_{\substack{n_2 \in \mathbb{Z}^3 \\ |n| \ll |n_2|^\theta}} \frac{\sin((t-t')\langle n+n_2 \rangle)}{\langle n+n_2 \rangle} \cdot O\left(\frac{1}{\langle n_2 \rangle^3}\right). \\ &= t' \sum_{\substack{n_2 \in \mathbb{Z}^3 \\ |n| \ll |n_2|^\theta}} \frac{\sin((t-t')(\langle n+n_2 \rangle + \langle n_2 \rangle))}{4\langle n+n_2 \rangle \langle n_2 \rangle^2} \\ &\quad + t' \sum_{\substack{n_2 \in \mathbb{Z}^3 \\ |n| \ll |n_2|^\theta}} \frac{\sin((t-t')(\langle n+n_2 \rangle - \langle n_2 \rangle))}{4\langle n+n_2 \rangle \langle n_2 \rangle^2} \\ &\quad + \sum_{\substack{n_2 \in \mathbb{Z}^3 \\ |n| \ll |n_2|^\theta}} \frac{\sin((t-t')\langle n+n_2 \rangle)}{\langle n+n_2 \rangle} \cdot O\left(\frac{1}{\langle n_2 \rangle^3}\right) \\ &=: \mathcal{A}_n^{(3)}(t, t') + \mathcal{A}_n^{(4)}(t, t') + \mathcal{A}_n^{(5)}(t, t'). \end{aligned} \quad (5.14)$$

We will show that

$$\|\langle n \rangle^{-\varepsilon} \mathcal{A}_n^{(j)}(t, t')\|_{\ell_n^\infty(\mathbb{Z}^3)} \leq C(T) \quad (5.15)$$

for any $\varepsilon > 0$, $0 \leq t' \leq t \leq T$, and $j = 4, 5$. Then, by denoting by $\mathfrak{J}_{\ominus, \ominus}^{(j)}(w)$ the contribution to $\mathfrak{J}_{\ominus, \ominus}(w)$ from $\mathbf{1}_{n=n_1} \cdot \mathcal{A}_n^{(j)}$, it follows from (1.30) and (5.15) that

$$\begin{aligned} \|\mathfrak{J}_{\ominus, \ominus}^{(j)}(w)(t)\|_{H^{s_2-1}} &\lesssim \left\| \int_0^t \frac{1}{\langle n \rangle^{1-s_2}} \widehat{w}(n, t') \mathcal{A}_n^{(j)}(t, t') dt' \right\|_{\ell_n^2} \\ &\lesssim T \|w\|_{L_t^\infty L_x^2} \left\| \frac{1}{\langle n \rangle^{1-s_2}} \mathcal{A}_n^{(j)}(t, t') \right\|_{L_{t,t'}^\infty([0, T]; \ell_n^\infty)} \\ &\lesssim C(T) \|w\|_{L_t^\infty L_x^2} \end{aligned} \quad (5.16)$$

for $t \in [0, T]$ and $j = 4, 5$, provided that $s_2 < 1$. The continuity in time of $\mathfrak{J}_{\ominus, \ominus}^{(j)}(w)(t)$ follows from a similar argument.

By noting that $\langle n + n_2 \rangle \sim \langle n_2 \rangle \gg \langle n \rangle$ under $|n| \ll |n_2|^\theta$, we see that (5.15) is easily verified for $j = 5$. On the other hand, the sum for $\mathcal{A}_n^{(4)}(t, t')$ is not absolutely convergent. As in Case 3 in Section 4, we exploit the symmetry $n_2 \leftrightarrow -n_2$ and the oscillatory nature of the sine kernel. With (4.13) and the mean value theorem, we have

$$\begin{aligned} \mathcal{A}_n^{(4)}(t, t') &= t' \sum_{\substack{n_2 \in \Lambda \\ |n| \ll |n_2|^\theta}} \frac{\sin((t-t')(\langle n+n_2 \rangle - \langle n_2 \rangle)) + \sin((t-t')(\langle n-n_2 \rangle - \langle n_2 \rangle))}{4\langle n+n_2 \rangle \langle n_2 \rangle^2} \\ &\quad - \sum_{\substack{n_2 \in \Lambda \\ |n| \ll |n_2|^\theta}} \frac{\sin((t-t')(\langle n-n_2 \rangle - \langle n_2 \rangle))}{4\langle n_2 \rangle^2} \left(\frac{1}{\langle n+n_2 \rangle} - \frac{1}{\langle n-n_2 \rangle} \right) \\ &= \sum_{\substack{n_2 \in \Lambda \\ |n| \ll |n_2|^\theta}} \frac{1}{4\langle n+n_2 \rangle \langle n_2 \rangle^2} \left\{ \sin \left((t-t') \left(\frac{\langle n, n_2 \rangle}{\langle n_2 \rangle} + \Theta^+(n, n_2) \right) \right) \right. \\ &\quad \left. - \sin \left((t-t') \left(\frac{\langle n, n_2 \rangle}{\langle n_2 \rangle} - \Theta^-(n, n_2) \right) \right) \right\} \\ &\quad + O \left(\sum_{\substack{n_2 \in \Lambda \\ |n| \ll |n_2|^\theta}} \frac{\langle n \rangle}{\langle n_2 \rangle^4} \right) \\ &\lesssim \sum_{\substack{n_2 \in \Lambda \\ |n| \ll |n_2|^\theta}} \frac{1}{\langle n+n_2 \rangle \langle n_2 \rangle^2} \frac{\langle n \rangle^{2\delta}}{\langle n_2 \rangle^\delta} + O(1) \\ &\lesssim \langle n \rangle^\delta \end{aligned}$$

for any $\delta \in (0, 1]$. This proves (5.15) and hence (5.16) for $j = 4$.

It remains to consider $\mathcal{A}_n^{(3)}(t, t')$. For this term, there is no internal cancellation structure and we need to make use of its fast oscillation by directly studying $\mathfrak{J}_{\ominus, \ominus}^{(3)}(w)$. From (1.30) and (5.14),

we have

$$\begin{aligned} \|\mathfrak{J}_{\otimes, \otimes}^{(3)}(w)(t)\|_{H^{s_2-1}} &\lesssim \sum_{\varepsilon_1 \in \{-1, 1\}} \left\| \frac{e^{i\varepsilon_1 t(\langle n+n_2 \rangle + \langle n_2 \rangle)}}{\langle n \rangle^{1-s_2}} \right. \\ &\quad \times \left. \sum_{\substack{n_2 \in \mathbb{Z}^3 \\ |n| \ll |n_2|^\theta}} \int_0^t \widehat{w}(n, t') t' \frac{e^{-i\varepsilon_1 t'(\langle n+n_2 \rangle + \langle n_2 \rangle)}}{\langle n+n_2 \rangle \langle n_2 \rangle^2} dt' \right\|_{\ell_n^2}. \end{aligned} \quad (5.17)$$

Integrating by parts, we have

$$\begin{aligned} &\int_0^t \widehat{w}(n, t') t' \frac{e^{-i\varepsilon_1 t'(\langle n+n_2 \rangle + \langle n_2 \rangle)}}{\langle n+n_2 \rangle \langle n_2 \rangle^2} dt' \\ &= \frac{1}{-i\varepsilon_1(\langle n+n_2 \rangle + \langle n_2 \rangle)\langle n+n_2 \rangle \langle n_2 \rangle^2} \\ &\quad \times \left\{ \widehat{w}(n, t) t e^{-i\varepsilon_1 t(\langle n+n_2 \rangle + \langle n_2 \rangle)} \right. \\ &\quad \left. - \int_0^t (\widehat{w}(n, t') + t' \partial_t \widehat{w}(n, t')) e^{-i\varepsilon_1 t'(\langle n+n_2 \rangle + \langle n_2 \rangle)} dt' \right\}. \end{aligned} \quad (5.18)$$

Hence, from (5.17) and (5.18), we obtain

$$\begin{aligned} \|\mathfrak{J}_{\otimes, \otimes}^{(3)}(w)(t)\|_{H^{s_2-1}} &\lesssim \sum_{n_2 \in \mathbb{Z}^3} \frac{1}{\langle n_2 \rangle^{4-(s_2+\varepsilon)\theta}} \left(\|w\|_{L_T^\infty H_x^{-1-\varepsilon}} + \|\partial_t w\|_{L_T^\infty H_x^{-1-\varepsilon}} \right) \\ &\lesssim \|w\|_{L_T^\infty H_x^{-1-\varepsilon}} + \|\partial_t w\|_{L_T^\infty H_x^{-1-\varepsilon}} \end{aligned}$$

for some small $\varepsilon > 0$. The continuity in time of $\mathfrak{J}_{\otimes, \otimes}^{(3)}(w)(t)$ follows from a similar argument.

This completes the proof of Proposition 1.11. \square

6. PROOF OF THEOREM 1.12

We present now the proof of Theorem 1.12. In the following, we assume that $0 < s_1 < s_2 < 1$. Recall that $(8, \frac{8}{3})$ and $(4, 4)$ are $\frac{1}{4}$ -admissible and $\frac{1}{2}$ -admissible, respectively. Given $0 < T \leq 1$, we define $X_T^{s_1}$ (and $Y_T^{s_2}$) as the intersection of the energy spaces of regularity s_1 (and s_2 , respectively) and the Strichartz space:

$$\begin{aligned} X_T^{s_1} &= C([0, T]; H^{s_1}(\mathbb{T}^3)) \cap C^1([0, T]; H^{s_1-1}(\mathbb{T}^3)) \cap L^8([0, T]; W^{s_1-\frac{1}{4}, \frac{8}{3}}(\mathbb{T}^3)), \\ Y_T^{s_2} &= C([0, T]; H^{s_2}(\mathbb{T}^3)) \cap C^1([0, T]; H^{s_2-1}(\mathbb{T}^3)) \cap L^4([0, T]; W^{s_2-\frac{1}{2}, 4}(\mathbb{T}^3)) \end{aligned} \quad (6.1)$$

and set

$$Z_T^{s_1, s_2} = X_T^{s_1} \times Y_T^{s_2}.$$

Let $\Phi = (\Phi_1, \Phi_2)$ be as in (1.39) with the enhanced data set Ξ in (1.37) belonging to $\mathcal{X}_T^{s_1, s_2, \varepsilon}$ for some small $\varepsilon = \varepsilon(s_1, s_2) > 0$. By the Strichartz estimates (Lemma 2.4), the paraproduct estimate (Lemma 2.1), and the regularity assumptions on \mathfrak{I} and \mathfrak{Y} , we have

$$\begin{aligned} \|\Phi_1(X, Y)\|_{X_T^{s_1}} &\lesssim \|(X_0, X_1)\|_{\mathcal{H}^{s_1}} + \|(X + Y - \mathfrak{Y}) \otimes \mathfrak{I}\|_{L_T^1 H^{s_1-1}} \\ &\lesssim \|(X_0, X_1)\|_{\mathcal{H}^{s_1}} + T \|X + Y - \mathfrak{Y}\|_{L_T^\infty L_x^2} \|\mathfrak{I}\|_{L_T^\infty W_x^{-\frac{1}{2}-\varepsilon, \infty}} \\ &\lesssim \|(X_0, X_1)\|_{\mathcal{H}^{s_1}} + T(1 + \|(X, Y)\|_{Z_T^{s_1, s_2}}) \end{aligned} \quad (6.2)$$

provided that $s_1 - 1 < -\frac{1}{2} - \varepsilon$, namely $s_1 < \frac{1}{2}$. Similarly, by Lemmas 2.4 and 2.1 with the regularity assumption on the enhanced data set Ξ in (1.37) and Corollary 5.2, we have

$$\begin{aligned}
& \left\| S(t')(Y_0, Y_1) - \int_0^t \frac{\sin((t-t')\langle \nabla \rangle)}{\langle \nabla \rangle} \left[2(X+Y-\Upsilon) \otimes \dagger + 2Y \otimes \dagger - 2\Upsilon \right. \right. \\
& \quad \left. \left. + 2Z - 4\mathfrak{J}_{\otimes}^{(1)}(X+Y-\Upsilon) \otimes \dagger \right] (t') dt' \right\|_{Y_T^{s_2}} \\
& \lesssim \|(Y_0, Y_1)\|_{\mathcal{H}^{s_2}} + \|(X+Y-\Upsilon) \otimes \dagger\|_{L_T^1 H_x^{s_2-1}} + \|Y \otimes \dagger\|_{L_T^1 H_x^{s_2-1}} + \|\Upsilon\|_{L_T^1 H_x^{s_2-1}} \\
& \quad + \|Z\|_{L_T^1 H_x^{s_2-1}} + \|\mathfrak{J}_{\otimes}^{(1)}(X+Y-\Upsilon) \otimes \dagger\|_{L_T^1 H_x^{s_2-1}} \\
& \lesssim \|(Y_0, Y_1)\|_{\mathcal{H}^{s_2}} + T(1 + \|X+Y-\Upsilon\|_{L_T^\infty H_x^{s_1}} + \|Y\|_{L_T^\infty H_x^{s_2}}) \\
& \lesssim \|(Y_0, Y_1)\|_{\mathcal{H}^{s_2}} + T(1 + \|(X, Y)\|_{Z_T^{s_1, s_2}}), \tag{6.3}
\end{aligned}$$

provided that $s_2 - 1 < \min(s_1 - \frac{1}{2} - 2\varepsilon, -\varepsilon)$ and $s_2 + (-\frac{1}{2} - \varepsilon) > 0$, namely,

$$\frac{1}{2} < s_2 < \min\left(1, s_1 + \frac{1}{2}\right).$$

Similarly, we have

$$\begin{aligned}
& \left\| \int_0^t \frac{\sin((t-t')\langle \nabla \rangle)}{\langle \nabla \rangle} \mathfrak{J}_{\otimes, \otimes}(X+Y-\Upsilon)(t') dt' \right\|_{Y_T^{s_2}} \lesssim \|\mathfrak{J}_{\otimes, \otimes}(X+Y-\Upsilon)\|_{L_T^1 H_x^{s_2-1}} \\
& \lesssim T\|X+Y-\Upsilon\|_{L_T^\infty L_x^2 \cap C_T^1 H_x^{-1-\varepsilon}} \\
& \lesssim T(1 + \|(X, Y)\|_{Z_T^{s_1, s_2}}), \tag{6.4}
\end{aligned}$$

provided that $s_2 < 1$. Lastly, by Lemma 2.4 with the fractional Leibniz rule (Lemma 2.2), we have

$$\begin{aligned}
& \left\| \int_0^t \frac{\sin((t-t')\langle \nabla \rangle)}{\langle \nabla \rangle} (X+Y-\Upsilon)^2(t') dt' \right\|_{Y_T^{s_2}} \lesssim \|\langle \nabla \rangle^{s_2-\frac{1}{2}}(X+Y-\Upsilon)^2\|_{L_{T,x}^{\frac{4}{3}}} \\
& \lesssim T^{\frac{1}{4}} \left(\|\langle \nabla \rangle^{s_2-\frac{1}{2}} X\|_{L_T^8 L_x^{\frac{8}{3}}}^2 + \|\langle \nabla \rangle^{s_2-\frac{1}{2}} Y\|_{L_{T,x}^4}^2 + \|\langle \nabla \rangle^{s_2-\frac{1}{2}} \Upsilon\|_{L_{T,x}^\infty}^2 \right) \\
& \lesssim T^{\frac{1}{4}} (1 + \|(X, Y)\|_{Z_T^{s_1, s_2}}^2), \tag{6.5}
\end{aligned}$$

provided that $s_2 \leq \min(1 - \varepsilon, s_1 + \frac{1}{4})$.

From (6.2), (6.3), (6.4), and (6.5), we obtain

$$\|\Phi(X, Y)\|_{Z_T^{s_1, s_2}} \lesssim \|(X_0, X_1)\|_{\mathcal{H}^{s_1}} + \|(Y_0, Y_1)\|_{\mathcal{H}^{s_2}} + T^\theta (1 + \|(X, Y)\|_{Z_T^{s_1, s_2}}^2) \tag{6.6}$$

for some $\theta > 0$. By repeating a similar computation, we also obtain the following estimate on the difference:

$$\begin{aligned}
& \|\Phi(X, Y) - \Phi(\tilde{X}, \tilde{Y})\|_{Z_T^{s_1, s_2}} \\
& \lesssim T^\theta (1 + \|(X, Y)\|_{Z_T^{s_1, s_2}} + \|(\tilde{X}, \tilde{Y})\|_{Z_T^{s_1, s_2}}) \|(X, Y) - (\tilde{X}, \tilde{Y})\|_{Z_T^{s_1, s_2}}. \tag{6.7}
\end{aligned}$$

Therefore, by choosing $T > 0$ sufficiently small (depending on the $\mathcal{X}_1^{s_1, s_2, \varepsilon}$ -norm of the enhanced data set Ξ), we conclude from (6.6) and (6.7) that Φ in (1.39) is a contraction on the ball $B_R \subset Z_T^{s_1, s_2}$ of radius $R \sim \|(X_0, X_1)\|_{\mathcal{H}^{s_1}} + \|(Y_0, Y_1)\|_{\mathcal{H}^{s_2}}$. A similar computation yields continuous dependence of the solution (X, Y) on the enhanced data set Ξ measured in the $\mathcal{X}_1^{s_1, s_2, \varepsilon}$ -norm. This concludes the proof of Theorem 1.12.

7. ON THE WEAK UNIVERSALITY OF THE RENORMALIZED SNLW

We conclude this paper by presenting the proof of Theorem 1.2. For the sake of concreteness, we take the Gaussian noise η_κ to be the mollified space-time white noise $\rho * \xi$ on $(\kappa^{-1}\mathbb{T})^3 \times \mathbb{R}_+$ given by

$$\eta_\kappa = \kappa^{\frac{3}{2}} \sum_{n \in \mathbb{Z}^3} \widehat{\rho}(\kappa n) \frac{d\beta_n}{dt} e_{\kappa n}, \quad (7.1)$$

where ρ is a (smooth) mollification kernel with support in $\mathbb{T}^3 \cong [-\frac{1}{2}, \frac{1}{2}]^3$, $\{\beta_n\}_{n \in \Lambda_0}$ is a family of mutually independent complex-valued Brownian motions and $\beta_{-n} := \overline{\beta_n}$, $n \in \Lambda_0$, as in (1.8). It is not difficult to see that η_κ is indeed a random field on $(\kappa^{-1}\mathbb{T})^3 \times \mathbb{R}_+$ which is smooth in space and white in time with stationary correlations.

Our aim is to describe the long time and large space behavior of the solution w_κ to (1.3). In order to do so, we perform a change of variables $u_\kappa(x, t) = \kappa^{-2} w_\kappa(\kappa^{-1}x, \kappa^{-1}t)$ as in (1.4). Then, the equation (1.3) takes the form:

$$\partial_t^2 u_\kappa + (1 - \Delta)u_\kappa = \kappa^{-4} f(\kappa^2 u_\kappa) + \kappa^{-4} a_\kappa^{(0)} + \kappa^{-2} a_\kappa^{(1)} u_\kappa + (1 - \kappa^{-2})u_\kappa + \xi_\kappa \quad (7.2)$$

on $\mathbb{T}^3 \times \mathbb{R}_+$. Here, $\xi_\kappa(x, t) = \kappa^{-2} \eta_\kappa(\kappa^{-1}x, \kappa^{-1}t)$ is chosen so that ξ_κ converges in law to the space-time white noise ξ on $\mathbb{T}^3 \times \mathbb{R}_+$ as $\kappa \rightarrow 0$. Indeed, from (7.1), we deduce that

$$\xi_\kappa = \sum_{n \in \mathbb{Z}^3} \widehat{\rho}(\kappa n) \frac{d\widetilde{\beta}_n}{dt} e_n, \quad (7.3)$$

where $\{\widetilde{\beta}_n\}_{n \in \Lambda_0}$ is a family of mutually independent complex Brownian motions with the same joint law as $\{\beta_n\}_{n \in \Lambda_0}$ and $\widetilde{\beta}_{-n} := \overline{\widetilde{\beta}_n}$, $n \in \Lambda_0$. By taking

$$\xi = \sum_{n \in \mathbb{Z}^3} \frac{d\widetilde{\beta}_n}{dt} e_n$$

as a realization of the space-time white noise ξ , we see that ξ_κ converges to ξ in $C^{-\frac{1}{2}-\varepsilon}(\mathbb{R}_+; W^{-\frac{3}{2}-\varepsilon, \infty}(\mathbb{T}^3))$ (endowed with the compact-open topology) almost surely for any $\varepsilon > 0$.

By the Taylor remainder theorem, we can write the right-hand side of (7.2) (excluding ξ_κ) as

$$\begin{aligned} & \kappa^{-4} f(\kappa^2 u_\kappa) + \kappa^{-4} a_\kappa^{(0)} + \kappa^{-2} a_\kappa^{(1)} u_\kappa + (1 - \kappa^{-2})u_\kappa \\ &= \{ \kappa^{-4} f(0) + \kappa^{-4} a_\kappa^{(0)} \} + \{ \kappa^{-2} f'(0) + \kappa^{-2} a_\kappa^{(1)} + (1 - \kappa^{-2}) \} u_\kappa \\ & \quad + \frac{f''(0)}{2} u_\kappa^2 + R_\kappa, \end{aligned}$$

where R_κ is the remainder given by

$$R_\kappa = \kappa^2 u_\kappa^3 \int_0^1 \frac{f'''(\tau \kappa^2 u_\kappa)}{6} (1 - \tau)^2 d\tau. \quad (7.4)$$

Let \mathfrak{t}_κ be the solution of the linear equation:

$$(\partial_t^2 + 1 - \Delta)\mathfrak{t}_\kappa = \xi_\kappa. \quad (7.5)$$

Then, with $b_\kappa(t) = \mathbb{E}[(\mathfrak{t}_\kappa(t))^2]$, we define the Wick power \mathfrak{v}_κ by

$$\mathfrak{v}_\kappa = (\mathfrak{t}_\kappa)^2 - b_\kappa. \quad (7.6)$$

We now choose the time-dependent parameters $a_\kappa^{(0)}$ and $a_\kappa^{(1)}$ by setting

$$a_\kappa^{(0)} = -f(0) - \kappa^4 c_f b_\kappa \quad \text{and} \quad a_\kappa^{(1)} = -f'(0) + (1 - \kappa^2), \quad (7.7)$$

where $c_f = \frac{f''(0)}{2}$. Then, by writing

$$u_\kappa = \mathfrak{t}_\kappa - w_\kappa,$$

we see from (7.2), (7.4), and (7.7) that v_κ satisfies

$$\partial_t^2 w_\kappa + (1 - \Delta)w_\kappa = c_f \mathfrak{V}_\kappa + 2c_f \mathfrak{t}_\kappa w_\kappa + c_f w_\kappa^2 + R_\kappa, \quad (7.8)$$

where we used (7.6) to replace $(\mathfrak{t}_\kappa)^2 - b_\kappa$ by \mathfrak{V}_κ . In the following, by scaling, we assume that

$$c_f = -1.$$

Letting $\mathfrak{Y}_\kappa = (\partial_t^2 + 1 - \Delta)^{-1}(\mathfrak{V}_\kappa)$, we decompose w_κ as

$$w_\kappa = -\mathfrak{Y}_\kappa + X_\kappa + Y_\kappa$$

as in Section 1. Then, by repeating the discussion in Section 1, we can rewrite the equation (7.8) for w_κ into the following system for X_κ and Y_κ :

$$\begin{aligned} X_\kappa(t) &= -2 \int_0^t \frac{\sin((t-t')\langle \nabla \rangle)}{\langle \nabla \rangle} [(X_\kappa + Y_\kappa - \mathfrak{Y}_\kappa) \otimes \mathfrak{t}_\kappa](t') dt', \\ Y_\kappa(t) &= - \int_0^t \frac{\sin((t-t')\langle \nabla \rangle)}{\langle \nabla \rangle} \left[(X_\kappa + Y_\kappa - \mathfrak{Y}_\kappa)^2 + 2(X_\kappa + Y_\kappa - \mathfrak{Y}_\kappa) \otimes \mathfrak{t}_\kappa \right. \\ &\quad \left. + 2Y_\kappa \otimes \mathfrak{t}_\kappa - 2\mathfrak{Y}_\kappa - R_\kappa \right. \\ &\quad \left. - 4\mathfrak{J}_{\otimes, \otimes}^{(1)}(X_\kappa + Y_\kappa - \mathfrak{Y}_\kappa) \otimes \mathfrak{t} - 4\mathfrak{J}_{\otimes, \otimes}^\kappa(X_\kappa Y_\kappa - \mathfrak{Y}_\kappa) \right](t') dt', \end{aligned} \quad (7.9)$$

where $\mathfrak{Y}_\kappa = \mathfrak{Y}_\kappa \otimes \mathfrak{t}$ and $\mathfrak{J}_{\otimes, \otimes}^\kappa$ is defined as in (1.30) with \mathfrak{t} replaced by \mathfrak{t}_κ .

Let $\frac{1}{4} < s_1 < \frac{1}{2} < s_2 \leq s_1 + \frac{1}{4}$. Note that the rescaled noise ξ_κ in (7.3) is basically the mollified space-time white noise. Hence, it is easy to see that the enhanced data set associated with the rescaled noise ξ_κ :

$$\Xi_\kappa = (0, 0, 0, 0, \mathfrak{t}_\kappa, \mathfrak{Y}_\kappa, \mathfrak{Y}_\kappa, 0, \mathfrak{J}_{\otimes, \otimes}^\kappa) \quad (7.10)$$

belongs to the class $\mathcal{X}_1^{s_1, s_2, \varepsilon}$ defined in (1.38) since \mathfrak{t}_κ , \mathfrak{Y}_κ , \mathfrak{Y}_κ , and $\mathfrak{J}_{\otimes, \otimes}^\kappa$ satisfy the statement analogous to Lemma 3.1 and Propositions 1.6, 1.8, and 1.11.

Note that the system (7.9) is analogous to the original system (1.39) with the enhanced data set Ξ replaced by Ξ_κ and an additional source term given by the remainder term R_κ . In the following, we proceed as in the proof of Theorem 1.12 and prove local well-posedness of the system (7.9) for $\kappa > 0$ on a time interval $[0, T]$, where $T = T(\omega)$ is an almost surely positive stopping time, independent of $\kappa > 0$. Under the assumption $\|f'''\|_{L^\infty} < \infty$, we have $R_\kappa = O(\kappa^2 u_\kappa^3)$, where

$$u_\kappa = \mathfrak{t}_\kappa - \mathfrak{Y}_\kappa + X_\kappa + Y_\kappa.$$

In order to handle the cubic structure of R_κ , we need to modify the norm for the second component Y_κ . Let $s_2 = \frac{1}{2} + \sigma$ with some small $\sigma > 0$. Noting that $(\frac{4}{1+2\sigma}, \frac{4}{1-2\sigma})$ is s_2 -admissible, we define the $\widetilde{Y}_T^{s_2}$ -space by the norm:

$$\widetilde{Y}_T^{s_2} = C([0, T]; H^{s_2}(\mathbb{T}^3)) \cap C^1([0, T]; H^{s_2-1}(\mathbb{T}^3)) \cap L^{\frac{4}{1+2\sigma}}([0, T]; L^{\frac{4}{1-2\sigma}}(\mathbb{T}^3))$$

and set

$$\tilde{Z}_T^{s_1, s_2} = X_T^{s_1} \times \tilde{Y}_T^{s_2},$$

where $X_T^{s_1}$ is as in (6.1). In the following, we use the fact that $(\frac{4}{3+8\sigma}, \frac{4}{3-4\sigma})$ is dual s_2 -admissible.

Note that (6.2), (6.3), and (6.4) hold true even after replacing $Z_T^{s_1, s_2}$ and $Y_T^{s_2}$ by $\tilde{Z}_T^{s_1, s_2}$ and $\tilde{Y}_T^{s_2}$, respectively. Instead of (6.5), from the Strichartz estimates (Lemma 2.4) and Sobolev's inequality on X , we have

$$\begin{aligned} & \left\| \int_0^t \frac{\sin((t-t')\langle \nabla \rangle)}{\langle \nabla \rangle} (X_\kappa + Y_\kappa - \Upsilon_\kappa)^2(t') dt' \right\|_{\tilde{Y}_T^{s_2}} \lesssim \|(X_\kappa + Y_\kappa - \Upsilon_\kappa)^2\|_{L_T^{\frac{4}{3+8\sigma}} L_x^{\frac{4}{3-4\sigma}}} \\ & \lesssim T^\theta \left(\|X_\kappa\|_{L_T^8 L_x^{\frac{8}{3-4\sigma}}}^2 + \|Y_\kappa\|_{L_T^{\frac{4}{1+2\sigma}} L_x^{\frac{4}{1-2\sigma}}}^2 + \|\Upsilon_\kappa\|_{L_{T,x}^\infty}^2 \right) \\ & \leq C(\omega) T^\theta (1 + \|(X_\kappa, Y_\kappa)\|_{\tilde{Z}_T^{s_1, s_2}}^2) \end{aligned} \quad (7.11)$$

for some $\theta > 0$, provided that $s_1 - \frac{1}{4} \geq \frac{3\sigma}{2}$, which allows us to apply Sobolev's inequality: $\|X_\kappa\|_{L_T^8 L_x^{\frac{8}{3-4\sigma}}} \lesssim \|X_\kappa\|_{L_T^8 W_x^{s_1 - \frac{1}{4}, \frac{8}{3}}}$. Given $s_1 > \frac{1}{4}$, this condition can be satisfied by choosing $\sigma > 0$ sufficiently small.

Next, we estimate the contribution from the remainder term R_κ . From (7.3) and (7.5), we see that $\hat{\Gamma}_\kappa(n, t)$ is essentially supported on the spatial frequencies $\{|n| \lesssim \kappa^{-1}\}$. Hence, we have $\kappa^{\frac{1}{2} + \varepsilon} \mathbf{1}_\kappa \in L^\infty([0, T]; L^\infty(\mathbb{T}^3))$ almost surely for any $\varepsilon > 0$. By a similar reasoning, the paracontrolled structure of the X_κ -equation in (7.9) allows us to conclude that X_κ essentially has the spatial frequency support on $\{|n| \lesssim \kappa^{-1}\}$. Therefore, from Lemma 2.4, (7.4) with $\|f'''\|_{L^\infty} < \infty$, and Sobolev's inequality, we have

$$\begin{aligned} & \left\| \int_0^t \frac{\sin((t-t')\langle \nabla \rangle)}{\langle \nabla \rangle} R_\kappa(t') dt' \right\|_{\tilde{Y}_T^{s_2}} \lesssim \kappa^2 \|(\mathbf{1}_\kappa - \Upsilon_\kappa + X_\kappa + Y_\kappa)^3\|_{L_T^{\frac{4}{3+8\sigma}} L_x^{\frac{4}{3-4\sigma}}} \\ & \lesssim \kappa^{\frac{1}{2} - 3\varepsilon} T \left(\|\kappa^{\frac{1}{2} + \varepsilon} \mathbf{1}_\kappa\|_{L_{T,x}^\infty}^3 + \|\Upsilon_\kappa\|_{L_{T,x}^\infty}^3 \right) \\ & \quad + \kappa^{3\delta} T^\theta \left(\|\kappa^{\frac{2}{3} - \delta} X_\kappa\|_{L_T^8 L_x^{\frac{12}{3-4\sigma}}}^3 + \|Y_\kappa\|_{L_T^{\frac{12}{3+8\sigma}} L_x^{\frac{12}{3-4\sigma}}}^3 \right) \\ & \leq C(\omega) \kappa^\delta T^\theta (1 + \|(X_\kappa, Y_\kappa)\|_{\tilde{Z}_T^{s_1, s_2}}^3) \end{aligned} \quad (7.12)$$

for some $\delta, \theta > 0$. Here we used the frequency support of X_κ and Sobolev's inequality to bound

$$\|\kappa^{\frac{2}{3} - \delta} X_\kappa\|_{L_T^8 L_x^{\frac{12}{3-4\sigma}}} \lesssim \|X_\kappa\|_{L_T^8 W_x^{-\frac{2}{3} + \delta, \frac{12}{3-4\sigma}}} \lesssim \|X_\kappa\|_{L_T^8 W_x^{s_1 - \frac{1}{4}, \frac{8}{3}}}$$

which holds when $3(\frac{3}{8} - \frac{3-4\sigma}{12}) = \frac{3}{8} + \sigma \leq (s_1 - \frac{1}{4}) + (\frac{2}{3} - \delta) = s_1 + \frac{5}{12} - \delta$. This last condition is guaranteed by choosing $\sigma, \delta > 0$ sufficiently small. Note that we used the following bound:

$$\|Y_\kappa\|_{L_T^{\frac{4}{1+8\sigma/3}} L_x^{\frac{4}{1-4\sigma/3}}} \lesssim T^{\frac{\sigma}{6}} \|Y_\kappa\|_{L_T^{\frac{4}{1+2\sigma}} L_x^{\frac{4}{1-2\sigma}}}$$

s_2 -admissible and dual s_2 -admissible pairs such that there is no derivative on \mathbb{R}_κ after applying the Strichartz estimate in (7.12). Otherwise, a (fractional) derivative would fall on $f'''(\tau \kappa^2 u_\kappa)$ in (7.4) and we would need to use the fractional chain rule, which would make the computation far more complicated.

Putting (6.2), (6.3), (6.4), (7.11), and (7.12) together, we conclude that the system (7.9) is locally well-posed on $[0, T]$, where $T = T(\omega)$ is an almost surely positive stopping time, independent of $\kappa > 0$.

As for the sequence $\{\Xi_N\}_{N \in \mathbb{N}}$ above, one can show that, at least along subsequences, the family $\{\Xi_\kappa\}_{\kappa \in (0,1)}$ in (7.10) converges (in the natural $\mathcal{X}_1^{s_1, s_2, \varepsilon}$ -topology) almost surely towards the random vector Ξ given by (1.41) with $(u_0, u_1) = (0, 0)$. Let (X, Y) be the solution to the original system (1.39) with this random data Ξ and set u by (1.42). Then, by using the above estimates, we can estimate the difference $(X - X_\kappa, Y - Y_\kappa)$. As a consequence, we conclude that that, along any countable sequence, u_κ converges to the same limit u in $C([0, T]; H^{-\frac{1}{2}-\varepsilon}(\mathbb{T}^3))$ almost surely (and hence in probability), where $T = T(\omega)$ is a random local existence time whose size depends only on the random data Ξ , in particular, independent of $\kappa \rightarrow 0$. Since the limit u does not depend on a particular countable sequence of $\kappa \rightarrow 0$, we can deduce that the whole family $\{u_\kappa\}_{\kappa \in (0,1)}$ converges in probability towards u . This completes the proof of Theorem 1.2.

Acknowledgements. M.G. and H.K. were supported by the DFG through CRC 1060. T.O. was supported by the ERC starting grant no. 637995 “ProbDynDispEq”. M.G. would like to thank the Isaac Newton Institute for Mathematical Sciences for support and hospitality during the programme Scaling limits, rough paths, quantum field theory when work on this paper was undertaken. This work was supported by EPSRC Grant Number EP/R014604/1.

REFERENCES

- [1] R. Allez, K. Chouk, *The continuous Anderson hamiltonian in dimension two*, arXiv:1511.02718 [math.PR].
- [2] S. Albeverio, Z. Haba, F. Russo, *Trivial solutions for a nonlinear two-space-dimensional wave equation perturbed by space-time white noise*, Stochastics Stochastics Rep. 56 (1996), no. 1-2, 127–160.
- [3] H. Bahouri, J.-Y. Chemin, R. Danchin, *Fourier analysis and nonlinear partial differential equations*, Grundlehren der Mathematischen Wissenschaften [Fundamental Principles of Mathematical Sciences], 343. Springer, Heidelberg, 2011. xvi+523 pp.
- [4] I. Bailleul, F. Bernicot, *Higher order paracontrolled calculus*, arXiv:1609.06966 [math.CA].
- [5] I. Bailleul, A. Debussche, M. Hofmanova, *Quasilinear generalized parabolic Anderson model*, Stoch. Partial Differ. Equ. Anal. Comput. (2018). <https://doi.org/10.1007/s40072-018-0121-1>
- [6] R. Bass, *Stochastic processes*. Cambridge Series in Statistical and Probabilistic Mathematics, 33. Cambridge University Press, Cambridge, 2011. xvi+390 pp.
- [7] Á. Bényi, T. Oh, O. Pocovnicu, *On the probabilistic Cauchy theory of the cubic nonlinear Schrödinger equation on \mathbb{R}^3 , $d \geq 3$* , Trans. Amer. Math. Soc. Ser. B 2 (2015), 1–50.
- [8] Á. Bényi, T. Oh, O. Pocovnicu, *Higher order expansions for the probabilistic local Cauchy theory of the cubic nonlinear Schrödinger equation on \mathbb{R}^3* , to appear in Trans. Amer. Math. Soc.
- [9] V. Bogachev, *Gaussian measures*, Mathematical Surveys and Monographs, 62. American Mathematical Society, Providence, RI, 1998. xii+433 pp.
- [10] J.-M. Bony, *Calcul symbolique et propagation des singularités pour les équations aux dérivées partielles non linéaires*, Ann. Sci. École Norm. Sup. 14 (1981), no. 2, 209–246.
- [11] J. Bourgain, *Invariant measures for the 2D-defocusing nonlinear Schrödinger equation*, Comm. Math. Phys. 176 (1996), no. 2, 421–445.
- [12] Y. Bruned, A. Chandra, I. Chevyrev, M. Hairer, *Renormalising SPDEs in regularity structures*, arXiv:1711.10239 [math.AP].
- [13] Y. Bruned, M. Hairer, L. Zambotti, *Algebraic renormalisation of regularity structures*, arXiv:1610.08468 [math.RA].
- [14] N. Burq, N. Tzvetkov, *Random data Cauchy theory for supercritical wave equations. I. Local theory*, Invent. Math. 173 (2008), no. 3, 449–475.
- [15] N. Burq, N. Tzvetkov, *Probabilistic well-posedness for the cubic wave equation*, J. Eur. Math. Soc. (JEMS) 16 (2014), no. 1, 1–30.
- [16] G. Cannizzaro, K. Chouk, *Multidimensional SDEs with singular drift and universal construction of the polymer measure with white noise potential*, Ann. Probab. 46 (2018), no. 3, 1710–1763.
- [17] G. Cannizzaro, K. Matetski, *Space-time discrete KPZ equation*, arXiv:1611.09719 [math.PR].
- [18] R. Catellier, K. Chouk, *Paracontrolled distributions and the 3-dimensional stochastic quantization equation*, Ann. Probab. 46 (2018), no. 5, 2621–2679.
- [19] A. Chandra, M. Hairer, *An analytic BPHZ theorem for regularity structures*, arXiv:1612.08138 [math.PR].

- [20] A. Chandra, M. Hairer, H. Shen, *The dynamical sine-Gordon model in the full subcritical regime*, arXiv:1808.02594 [math.PR].
- [21] R. R. Coifman, Y. Meyer, *Au-delà des opérateurs pseudo-différentiels*, Astérisque, 57. Société Mathématique de France, Paris, 1978. i+185 pp.
- [22] G. Da Prato, A. Debussche, *Two-dimensional Navier-Stokes equations driven by a space-time white noise*, J. Funct. Anal. 196 (2002), no. 1, 180–210.
- [23] G. Da Prato, A. Debussche, *Strong solutions to the stochastic quantization equations*, Ann. Probab. 31 (2003), no. 4, 1900–1916.
- [24] A. Debussche, J. Martin, *Solution to the stochastic Schrödinger equation on the full space*, arXiv:1707.06431 [math.PR].
- [25] A. Debussche and H. Weber, *The Schrödinger equation with spatial white noise potential*, Electron. J. Probab. 23 (2018), Paper No. 28, 16 pp.
- [26] D. Fan, S. Sato, *Transference on certain multilinear multiplier operators*, J. Aust. Math. Soc. 70 (2001), no. 1, 37–55.
- [27] P. K. Friz, M. Hairer, *A course on rough paths. With an introduction to regularity structures*, Universitext. Springer, Cham, 2014. xiv+251 pp.
- [28] T. Funaki, M. Hoshino, *A coupled KPZ equation, its two types of approximations and existence of global solutions*, J. Funct. Anal. 273 (2017), no. 3, 1165–1204.
- [29] M. Furlan, M. Gubinelli, *Paracontrolled quasilinear SPDEs*, arXiv:1610.07886 [math.PR].
- [30] M. Furlan, M. Gubinelli, *Weak universality for a class of 3d stochastic reaction–diffusion models*, Probab. Theory Relat. Fields (2018). <https://doi.org/10.1007/s00440-018-0849-6>
- [31] J. Ginibre, G. Velo, *Generalized Strichartz inequalities for the wave equation*, J. Funct. Anal. 133 (1995), 50–68.
- [32] M. Gerencsér, M. Hairer, *A solution theory for quasilinear singular SPDEs*, arXiv:1712.01881 [math.AP].
- [33] M. Gubinelli, *Rough solutions for the periodic Korteweg-de Vries equation*, Commun. Pure Appl. Anal. 11 (2012), no. 2, 709–733.
- [34] M. Gubinelli, P. Imkeller, N. Perkowski, *Paracontrolled distributions and singular PDEs*, Forum Math. Pi 3 (2015), e6, 75 pp.
- [35] M. Gubinelli, M. Hofmann, *Global solutions to elliptic and parabolic Φ^4 models in Euclidean space*, arXiv:1804.11253 [math-ph].
- [36] M. Gubinelli, H. Koch, T. Oh, *Renormalization of the two-dimensional stochastic nonlinear wave equations*, Trans. Amer. Math. Soc. 370 (2018), no. 10, 7335–7359.
- [37] M. Gubinelli, H. Koch, T. Oh, L. Tolomeo, *Global dynamics for the two-dimensional stochastic nonlinear wave equations*, preprint.
- [38] M. Gubinelli, N. Perkowski, *KPZ reloaded*, Commun. Math. Phys. 349 (2017), 165–269.
- [39] M. Gubinelli, B. E. Ugurcan, I. Zachhuber, *Semilinear evolution equations for the Anderson Hamiltonian in two and three dimensions*, arXiv:1807.06825 [math.AP].
- [40] M. Hairer, *Solving the KPZ equation*, Ann. of Math. 178 (2013), no. 2, 559–664.
- [41] M. Hairer, *A theory of regularity structures*, Invent. Math. 198 (2014), no. 2, 269–504.
- [42] M. Hairer, *Singular stochastic PDEs*, In *Proceedings of the International Congress of Mathematicians—Seoul 2014. Vol. 1*, pages 685–709. Kyung Moon Sa, Seoul, 2014.
- [43] M. Hairer, *The motion of a random string*, arXiv:1605.02192 [math.PR].
- [44] M. Hairer, *Renormalisation of parabolic stochastic PDEs*, Jpn. J. Math. 13 (2018), no. 2, 187–233.
- [45] M. Hairer, C. Labbé, *Multiplicative stochastic heat equations on the whole space*, J. Eur. Math. Soc. (JEMS) 20 (2018), no. 4, 1005–1054.
- [46] M. Hairer, K. Matetski, *Discretisations of rough stochastic PDEs*, Ann. Probab. 46 (2018), no. 3, 1651–1709.
- [47] M. Hairer, H. Shen, *The dynamical sine-Gordon model*, Comm. Math. Phys. 341 (2016) no. 3, 933–989.
- [48] M. Hairer, H. Shen, *A central limit theorem for the KPZ equation*, Ann. Probab. 45 (2017), no. 6B, 4167–4221.
- [49] M. Hairer, J. Quastel, *A class of growth models rescaling to KPZ*, arXiv:1512.07845 [math-ph].
- [50] M. Hairer, W. Xu, *Large-scale behavior of three-dimensional continuous phase coexistence models*, Comm. Pure Appl. Math. 71 (2018), no. 4, 688–746.
- [51] M. Hairer, W. Xu, *Large-scale limit of interface fluctuation models*, arXiv:1802.08192 [math.PR].
- [52] M. Hoshino, *Paracontrolled calculus and Funaki-Quastel approximation for the KPZ equation*, Stochastic Process. Appl. 128 (2018), no. 4, 1238–1293.
- [53] M. Hoshino, *Global well-posedness of complex Ginzburg–Landau equation with a space-time white noise*, Ann. Inst. Henri Poincaré Probab. Stat. 54 (2018), no. 4, 1969–2001.

- [54] M. Hoshino, Y. Inahama, N. Naganuma, *Stochastic complex Ginzburg-Landau equation with space-time white noise*, Electron. J. Probab. 22 (2017), Paper No. 104, 68 pp.
- [55] M. Keel, T. Tao, *Endpoint Strichartz estimates*, Amer. J. Math. 120 (1998), no. 5, 955–980.
- [56] R. Killip, B. Stovall, M. Visan, *Blowup behaviour for the nonlinear Klein-Gordon equation*, Math. Ann. 358 (2014), no. 1-2, 289–350.
- [57] A. Kupiainen, *Renormalization group and stochastic PDEs*, Ann. Henri Poincaré 17 (2016), no. 3, 497–535.
- [58] A. Kupiainen, M. Marozzi, *Renormalization of generalized KPZ equation*, J. Stat. Phys. 166 (2017), no. 3-4, 876–902.
- [59] H. Lindblad, C. Sogge, *On existence and scattering with minimal regularity for semilinear wave equations*, J. Funct. Anal. 130 (1995), 357–426.
- [60] J. Lührmann, D. Mendelson, *Random data Cauchy theory for nonlinear wave equations of power-type on \mathbb{R}^3* , Comm. Partial Differential Equations 39 (2014), no. 12, 2262–2283.
- [61] J. Martin, N. Perkowski, *Paracontrolled distributions on Bravais lattices and weak universality of the 2d parabolic Anderson model*, arXiv:1704.08653 [math.PR].
- [62] K. Matetski, *Martingale-driven approximations of singular stochastic PDEs*, arXiv:1808.09429 [math.PR].
- [63] H.P. McKean, *Statistical mechanics of nonlinear wave equations. IV. Cubic Schrödinger*, Comm. Math. Phys. 168 (1995), no. 3, 479–491. *Erratum: Statistical mechanics of nonlinear wave equations. IV. Cubic Schrödinger*, Comm. Math. Phys. 173 (1995), no. 3, 675.
- [64] J.-C. Mourrat, H. Weber, *Global well-posedness of the dynamic Φ^4 model in the plane*, Ann. Probab. 45 (2017), no. 4, 2398–2476.
- [65] J.-C. Mourrat, H. Weber, *The dynamic Φ_3^4 model comes down from infinity*, Comm. Math. Phys. 356 (2017), no. 3, 673–753.
- [66] J.-C. Mourrat, H. Weber, W. Xu, *Construction of Φ_3^4 diagrams for pedestrians*, From particle systems to partial differential equations, 1–46, Springer Proc. Math. Stat., 209, Springer, Cham, 2017.
- [67] C. Muscalu, W. Schlag, *Classical and multilinear harmonic analysis. Vol. II*, Cambridge Studies in Advanced Mathematics, 138. Cambridge University Press, Cambridge, 2013. xvi+324 pp.
- [68] E. Nelson, *A quartic interaction in two dimensions*, 1966 Mathematical Theory of Elementary Particles (Proc. Conf., Dedham, Mass., 1965), pp. 69–73, M.I.T. Press, Cambridge, Mass.
- [69] M. Oberguggenberger, F. Russo, *Nonlinear stochastic wave equations*, Integral Transform. Spec. Funct. 6 (1998), no. 1–4, 71–83.
- [70] M. Oberguggenberger, F. Russo, *Singular limiting behavior in nonlinear stochastic wave equations*, in *Stochastic analysis and mathematical physics*, 87–99, Progr. Probab., 50, Birkhäuser, Boston, Boston, MA, 2001.
- [71] T. Oh, *Periodic stochastic Korteweg-de Vries equation with additive space-time white noise*, Anal. PDE 2 (2009), no. 3, 281–304.
- [72] T. Oh, M. Okamoto, N. Tzvetkov, *Uniqueness and non-uniqueness of the Gaussian free field evolution under the two-dimensional Wick ordered cubic wave equation*, preprint.
- [73] T. Oh, O. Pocovnicu, *Probabilistic global well-posedness of the energy-critical defocusing quintic nonlinear wave equation on \mathbb{R}^3* , J. Math. Pures Appl. 105 (2016), 342–366.
- [74] T. Oh, O. Pocovnicu, *A remark on almost sure global well-posedness of the energy-critical defocusing nonlinear wave equations in the periodic setting*, Tohoku Math. J. 69 (2017), no.3, 455–481.
- [75] T. Oh, L. Thomann, *Invariant Gibbs measure for the 2-d defocusing nonlinear wave equations*, to appear in Ann. Fac. Sci. Toulouse Math.
- [76] T. Oh, N. Tzvetkov, Y. Wang, *Solving the 4NLS with white noise initial data*, preprint.
- [77] F. Otto, J. Sauer, S. Smith, H. Weber, *Parabolic equations with rough coefficients and singular forcing*, arXiv:1803.07884 [math.AP].
- [78] F. Otto and H. Weber, *Quasilinear SPDEs via rough paths*, arXiv:1605.09744 [math.AP].
- [79] N. Perkowski and T. Cornelis Rosati, *The KPZ equation on the real line*, arXiv:1808.00354 [math.PR].
- [80] O. Pocovnicu, *Probabilistic global well-posedness of the energy-critical defocusing cubic nonlinear wave equations on \mathbb{R}^4* , J. Eur. Math. Soc. (JEMS) 19 (2017), 2321–2375.
- [81] F. Russo, *Colombeau generalized functions and stochastic analysis*, *Stochastic analysis and applications in physics (Funchal, 1993)*, 329–349, NATO Adv. Sci. Inst. Ser. C Math. Phys. Sci., 449, Kluwer Acad. Publ., Dordrecht.
- [82] H. Shen, *Stochastic quantization of an Abelian gauge theory*, arXiv:1801.04596 [math.PR].
- [83] H. Shen, H. Weber, *Glauber dynamics of 2d Kac-Blume-Capel model and their stochastic PDE limits*, J. Funct. Anal. 275 (2018), no. 6, 1321–1367.
- [84] H. Shen, W. Xu, *Weak universality of dynamical ϕ_3^4 : non-Gaussian noise*, Stoch. Partial Differ. Equ. Anal. Comput. 6 (2018), no. 2, 211–254.

- [85] I. Shigekawa, *Stochastic analysis*, Translated from the 1998 Japanese original by the author. Translations of Mathematical Monographs, 224. Iwanami Series in Modern Mathematics. American Mathematical Society, Providence, RI, 2004. xii+182 pp.
- [86] B. Simon, *The $P(\varphi)_2$ Euclidean (quantum) field theory*, Princeton Series in Physics. Princeton University Press, Princeton, N.J., 1974. xx+392 pp.
- [87] T. Tao, *Nonlinear dispersive equations. Local and global analysis*, CBMS Regional Conference Series in Mathematics, 106. Published for the Conference Board of the Mathematical Sciences, Washington, DC; by the American Mathematical Society, Providence, RI, 2006. xvi+373 pp.
- [88] L. Thomann, N. Tzvetkov, *Gibbs measure for the periodic derivative nonlinear Schrödinger equation*, Nonlinearity 23 (2010), no. 11, 2771–2791.
- [89] L. Tolomeo *Global well-posedness of the two-dimensional stochastic nonlinear wave equation on an unbounded domain*, preprint.
- [90] R. Zhu and X. Zhu, *Three-dimensional Navier-Stokes equations driven by space-time white noise*, J. Differential Equations 259 (2015), no. 9, 4443–4508.

MASSIMILIANO GUBINELLI, HAUSDORFF CENTER FOR MATHEMATICS & INSTITUT FÜR ANGEWANDTE MATHEMATIK, UNIVERSITÄT BONN, ENDENICHER ALLEE 60, D-53115 BONN, GERMANY

E-mail address: `gubinelli@iam.uni-bonn.de`

HERBERT KOCH, MATHEMATISCHES INSTITUT, UNIVERSITÄT BONN, ENDENICHER ALLEE 60, D-53115 BONN, GERMANY

E-mail address: `koch@math.uni-bonn.de`

TADAHIRO OH, SCHOOL OF MATHEMATICS, THE UNIVERSITY OF EDINBURGH, AND THE MAXWELL INSTITUTE FOR THE MATHEMATICAL SCIENCES, JAMES CLERK MAXWELL BUILDING, THE KING'S BUILDINGS, PETER GUTHRIE TAIT ROAD, EDINBURGH, EH9 3FD, UNITED KINGDOM

E-mail address: `hiro.oh@ed.ac.uk`